



香港城市大學  
City University of Hong Kong

專業 創新 胸懷全球  
Professional · Creative  
For The World

## CityU Scholars

### Conformations of cyclopentasilane stereoisomers control molecular junction conductance

Li, Haixing; Garner, Marc H.; Shangguan, Zhichun; Zheng, Qianwen; Su, Timothy A.; Neupane, Madhav; Li, Panpan; Velian, Alexandra; Steigerwald, Michael L.; Xiao, Shengxiang; Nuckolls, Colin; Solomon, Gemma C.; Venkataraman, Latha

**Published in:**  
Chemical Science

**Published:** 01/01/2016

**Document Version:**  
Final Published version, also known as Publisher's PDF, Publisher's Final version or Version of Record

**License:**  
CC BY-NC

**Publication record in CityU Scholars:**  
[Go to record](#)

**Published version (DOI):**  
[10.1039/c6sc01360k](https://doi.org/10.1039/c6sc01360k)

**Publication details:**  
Li, H., Garner, M. H., Shangguan, Z., Zheng, Q., Su, T. A., Neupane, M., Li, P., Velian, A., Steigerwald, M. L., Xiao, S., Nuckolls, C., Solomon, G. C., & Venkataraman, L. (2016). Conformations of cyclopentasilane stereoisomers control molecular junction conductance. *Chemical Science*, 7(9), 5657-5662.  
<https://doi.org/10.1039/c6sc01360k>

#### Citing this paper

Please note that where the full-text provided on CityU Scholars is the Post-print version (also known as Accepted Author Manuscript, Peer-reviewed or Author Final version), it may differ from the Final Published version. When citing, ensure that you check and use the publisher's definitive version for pagination and other details.

#### General rights

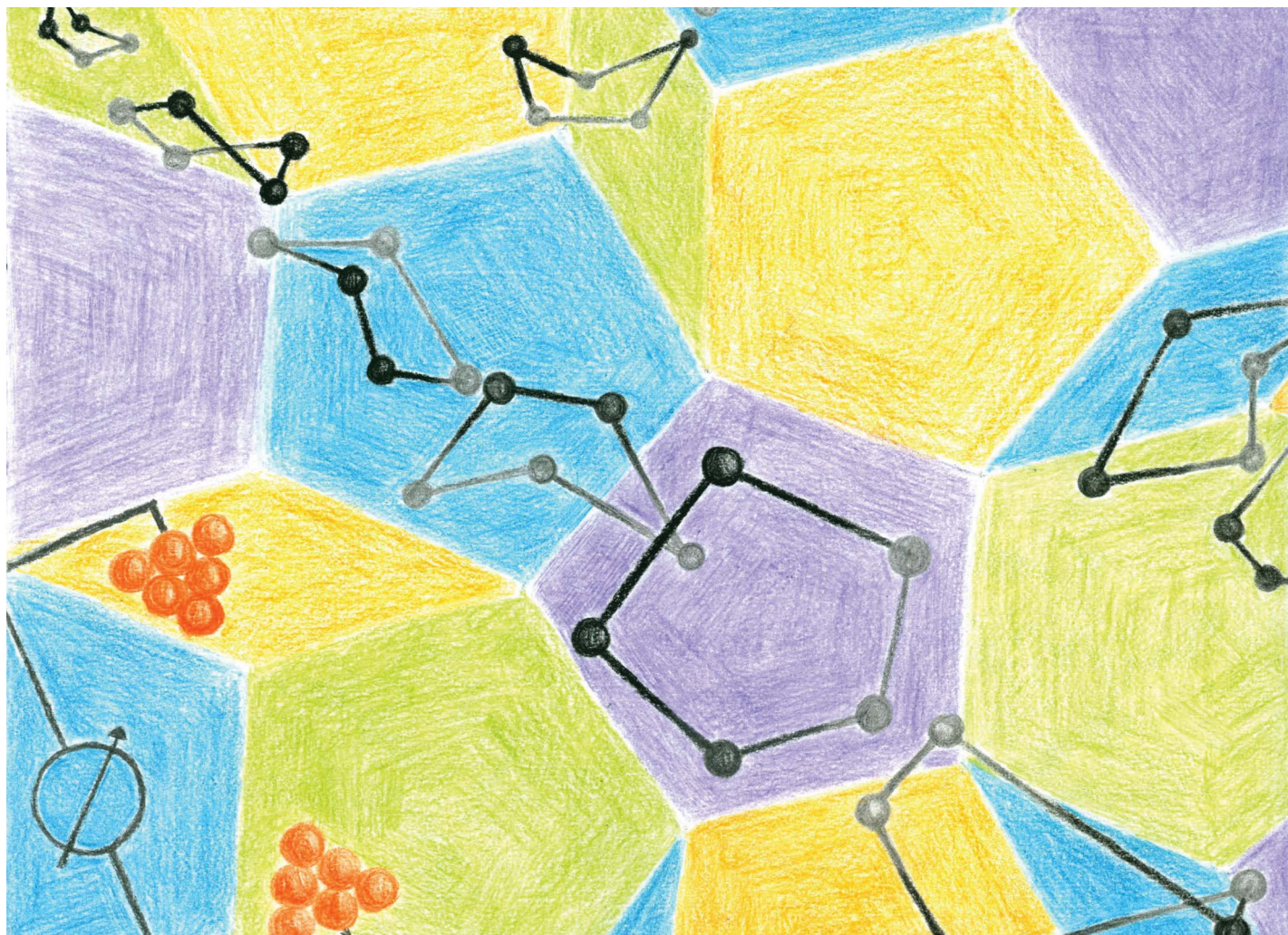
Copyright for the publications made accessible via the CityU Scholars portal is retained by the author(s) and/or other copyright owners and it is a condition of accessing these publications that users recognise and abide by the legal requirements associated with these rights. Users may not further distribute the material or use it for any profit-making activity or commercial gain.

#### Publisher permission

Permission for previously published items are in accordance with publisher's copyright policies sourced from the SHERPA RoMEO database. Links to full text versions (either Published or Post-print) are only available if corresponding publishers allow open access.

#### Take down policy

Contact [lbscholars@cityu.edu.hk](mailto:lbscholars@cityu.edu.hk) if you believe that this document breaches copyright and provide us with details. We will remove access to the work immediately and investigate your claim.



Showcasing collaborative research from the laboratories of Latha Venkataraman (Columbia University, United States), Gemma Solomon (University of Copenhagen, Denmark), Shengxiong Xiao (Shanghai Normal University, China), and Colin Nuckolls (Columbia University, United States).

Conformations of cyclopentasilane stereoisomers control molecular junction conductance

The dramatic scaling of silicon based devices has sparked a lot of interest in understanding the electronic properties of single-molecule devices created with silane derivatives. In this work, we show that the vast conformational flexibility of *cis* and *trans* isomers of functionalized cyclopentasilanes alters their electronic transport characteristics. Through a combined experimental and theoretical effort, we demonstrate that geometrically constrained cyclic pentasilanes are poor conductors when compared with their linear counterparts due to weak  $\sigma$ -conjugation in Si-Si bonds.

As featured in:



See Shengxiong Xiao, Colin Nuckolls, Gemma C. Solomon, Latha Venkataraman *et al.*, *Chem. Sci.*, 2016, 7, 5657.



[www.rsc.org/chemicalscience](http://www.rsc.org/chemicalscience)

Registered charity number: 207890

CrossMark  
click for updatesCite this: *Chem. Sci.*, 2016, 7, 5657

# Conformations of cyclopentasilane stereoisomers control molecular junction conductance†

Haixing Li,<sup>†a</sup> Marc H. Garner,<sup>†b</sup> Zhichun Shangguan,<sup>‡c</sup> Qianwen Zheng,<sup>c</sup> Timothy A. Su,<sup>d</sup> Madhav Neupane,<sup>d</sup> Panpan Li,<sup>§c</sup> Alexandra Velian,<sup>d</sup> Michael L. Steigerwald,<sup>d</sup> Shengxiang Xiao,<sup>\*c</sup> Colin Nuckolls,<sup>\*cd</sup> Gemma C. Solomon<sup>\*b</sup> and Latha Venkataraman<sup>\*ad</sup>

Here we examine the impact of ring conformation on the charge transport characteristics of cyclic pentasilane structures bound to gold electrodes in single molecule junctions. We investigate the conductance properties of alkylated cyclopentasilane *cis* and *trans* stereoisomers substituted in the 1,3-position with methylthiomethyl electrode binding groups using both the scanning tunneling microscope-based break junction technique and density functional theory based *ab initio* calculations. In contrast with the linear ones, these cyclic silanes yield lower conductance values; calculations reveal that the constrained dihedral geometries occurring within the ring are suboptimal for  $\sigma$ -orbital delocalization, and therefore, conductance. Theoretical calculations reproduce the measured conductance trends for both *cis* and *trans* isomers and find several distinct conformations that are likely to form stable molecular junctions at room temperature. Due to the weakened  $\sigma$ -conjugation in the molecule, through-space interactions are found to contribute significantly to the conductance. This manuscript details the vast conformational flexibility in cyclopentasilanes and the tremendous impact it has on controlling conductance.

Received 27th March 2016  
Accepted 27th May 2016

DOI: 10.1039/c6sc01360k

www.rsc.org/chemicalscience

## Introduction

Though silicon is the most prevalent semiconductor material in integrated circuits, its conductance has been scarcely studied at the molecular scale. With the dramatic scaling of silicon devices to the sub-20 nm length scale, it is becoming critical to probe transport properties of complex silicon-based nanoscale structures, such as silicon clusters, nanowires and silicene 2D layers.<sup>1–4</sup> Efforts in molecular electronics have demonstrated the use of silicon surfaces as electrodes<sup>5–9</sup> and amino-silanes as

chemical binding groups to the electrodes.<sup>10,11</sup> Moreover, investigation on cyclohexasilane<sup>12</sup> has shown that conformations affect the molecule's electronic structure and another study on [2,2]bicyclic carbosilane systems<sup>13</sup> has suggested that different disilanylene bridges in the cage compounds do not act as parallel resistors. Recently we synthesized linear chains of molecular silicon that demonstrated conductance decay properties comparable to those of  $\pi$ -conjugated hydrocarbons.<sup>14–16</sup> While Si–Si  $\sigma$ -bonds are strongly conjugated, similar to C–C  $\pi$ -bonds, a fundamental difference between them is that the Si–Si  $\sigma$ -bond network is tetrahedral and not planar. This tetrahedrality enables oligosilane-based wires to access many more conformations, which opens up the possibility to harness  $\sigma$ -bond stereoelectronics to design functional molecular electronic components.<sup>16</sup>

Cyclic  $sp^3$   $\sigma$ -based structures can adopt many possible ring conformations as demonstrated by many years of synthetic<sup>17–20</sup> and theoretical studies,<sup>21–24</sup> however, charge transport measurements at a single molecule level on such systems are heretofore unexplored. Here we synthesize the *cis* and *trans* isomers of a cyclic pentasilane di-functionalized with aurophilic methyl sulfide groups (chemical structures shown in Fig. 1) and measure their single-molecule junction conductance using scanning tunneling microscope-based break junction technique (STM-BJ).<sup>25,26</sup> We find that the *cis* and *trans* isomers are distinctly different in their conductance behavior. The *cis* isomer shows a double-peaked conductance histogram

<sup>a</sup>Department of Applied Physics and Applied Mathematics, Columbia University, New York 10027, USA. E-mail: hv2117@columbia.edu

<sup>b</sup>Nano-Science Center and Department of Chemistry, University of Copenhagen, Universitetsparken 5, 2100 Copenhagen Ø, Denmark. E-mail: gsolomon@chem.ku.dk

<sup>c</sup>The Education Ministry Key Lab of Resource Chemistry, Shanghai Key Laboratory of Rare Earth Functional Materials, Optoelectronic Nano Materials and Devices Institute, Department of Chemistry, Shanghai Normal University, Shanghai 200234, China. E-mail: senksong@msn.com

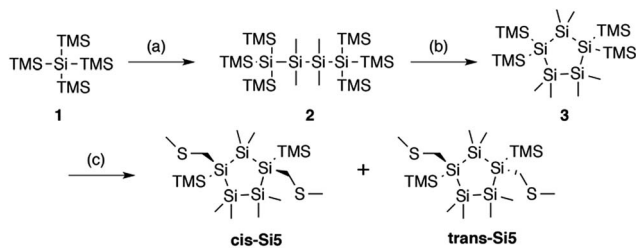
<sup>d</sup>Department of Chemistry, Columbia University, New York 10027, USA. E-mail: cn37@columbia.edu

† Electronic supplementary information (ESI) available: Synthetic procedures, STM-BJ measurement details, supplemental figures, computational details, characterization data and xyz files for calculated structures. CCDC 1470541. For ESI and crystallographic data in CIF or other electronic format see DOI: 10.1039/c6sc01360k

‡ H. L., M. H. G. and Z. S. contributed equally to this work.

§ Present address: Rm 204, Chong Yuet Ming Chemistry Building, The University of Hong Kong, Pokfulam Road, Hong Kong, China.





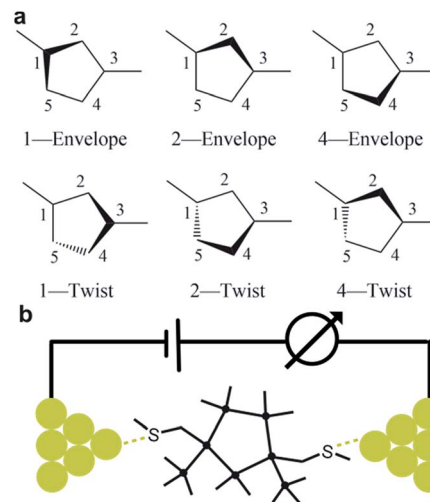
**Fig. 1** Synthesis of *trans* and *cis* cyclopentasilane terminated with methylthiomethyl end groups. (a) (i)  $\text{KO}^t\text{Bu}$ , THF, r.t. (ii)  $\text{ClSiMe}_2\text{-SiMe}_2\text{Cl}$ , toluene,  $-70\text{ }^\circ\text{C}$  to r.t., 85% yield. (b) (i)  $\text{KO}^t\text{Bu}$ , 18-crown-6, toluene, r.t. (ii)  $\text{SiMe}_2\text{Cl}_2$ , toluene, r.t., 81% yield. (c) (i)  $\text{KO}^t\text{Bu}$ , 18-crown-6, toluene, r.t. (ii)  $\text{ClCH}_2\text{SMe}$ , toluene,  $-78\text{ }^\circ\text{C}$  to r.t. 15% yield for *cis-Si5*, 10% yield for *trans-Si5*. Additional details on the synthetic methods are in the ESI Section I.†

indicative of the formation of two structures. In contrast, the *trans* isomer shows a single-peaked conductance histogram at a conductance value lower than that of the *cis*. Through density functional theory (DFT) based *ab initio* calculations, we model junctions for a large number of conformers of both the *cis* and *trans* isomers. Our calculations indicate that the constraint imposed on the internal ring dihedrals hinders  $\sigma$ -conjugation across the molecule, which contributes to the lower conductance value that we observe in these cyclic structures compared with linear oligosilanes of similar oligomer order. We find that the unique conductance profile of each isomer we observe experimentally relates to the different junction conformations accessible to each isomer and the structural differences between the two isomers.

## Results and discussion

We prepare the *cis* and *trans* isomers following the synthetic procedure shown in Fig. 1. We quench the combination of tetrakis(trimethylsilyl)silane 1 and potassium tertbutoxide ( $\text{KO}^t\text{Bu}$ ),<sup>19</sup> with 1,2-dichlorotetramethyldisilane to yield oligosilane 2. Next, we cleave two TMS groups from 2 with  $\text{KO}^t\text{Bu}$  and 18-crown-6 and quench the dianion with dichlorodimethylsilane to produce cyclopentasilane 3.<sup>17,18</sup> We then functionalize cyclopentasilane 3 with electrode linking methylthiomethyl ( $\text{CH}_2\text{SMe}$ ) groups at the 1,3-positions by cleaving the terminal TMS groups with  $\text{KO}^t\text{Bu}$ /18-C-6 and adding the chloromethyl methyl sulfide electrophile. We separate the two isomers by silica gel chromatography to yield the *cis-Si5* and *trans-Si5* molecules for this study. We were able to grow single crystals suitable for single crystal X-ray diffraction for *cis-Si5* from diethyl ether at  $-30\text{ }^\circ\text{C}$  (the .cif file and details are contained in the ESI†).

The five-membered rings have two predominant conformations, envelope ( $C_2$ ) and twist ( $C_2$ ), with the nomenclature defined by the number of Si-atoms that lie in and out of the plane of the ring. The envelope conformer has four Si-atoms in plane and one above or below the plane of the ring. The twist conformer has three Si-atoms in plane, one above the plane, and one below the plane. As the cyclopentasilane is di-substituted, six unique conformations appear by rotating the position of the substituents relative to the ring conformation as



**Fig. 2** (a) Six generic conformer types of a di-substituted five membered ring. (b) A schematic of the scanning tunneling microscope break-junction (STM-BJ).

illustrated in Fig. 2a. Five of these conformations are further divided in two classes as the linkers can be on either side of the plane of the ring, the exceptions being *cis*-2-twist and *trans*-2-envelope as the linker positions are symmetric.

We measure the single molecule junction conductance (current/voltage) of *cis-Si5* and *trans-Si5* using STM-BJ technique (schematic shown in Fig. 2b) under ambient conditions (see ESI† Section II for more details).<sup>25,26</sup> We repeatedly form and break Au point contacts between an Au tip and an Au-on-mica substrate and measure conductance as a function of displacement. A single molecule junction is formed when the atomic contact is broken in a 1 mM solution of the target molecule in 1,2,4-trichlorobenzene. Each conductance-displacement measurement shows plateaus at a conductance close to integer multiples of the conductance quantum,  $G_0 = 2e^2/h$  and additional molecular plateaus below  $1 G_0$ . These plateaus below  $1 G_0$  signify that an Au-molecule-Au junction is formed after the metal contact breaks.

We repeat the measurements and collect thousands of traces to determine the most frequently measured conductance value for each molecule. We compile all measured conductance traces into logarithmically binned one-dimensional histograms<sup>27</sup> in Fig. 3a. We find that the *trans-Si5* histogram shows a single conductance peak at  $\sim 1.6 \times 10^{-4} G_0$  while that of *cis-Si5* shows a higher conducting peak at  $6 \times 10^{-4} G_0$  and a lower conducting peak at  $2 \times 10^{-4} G_0$ . In Fig. 3b and c, we overlay all measured conductance traces, aligning them along the displacement axis at  $0.5 G_0$  and generate two-dimensional conductance-displacement histograms to show the evolution of conductance as we elongate the junction.<sup>27</sup> We see that both *cis-Si5* and *trans-Si5* can form junctions that extend to roughly  $6\text{ \AA}$  beyond the rupture of the Au point-contact, although a majority of the junctions rupture after a  $\sim 2\text{-}3\text{ \AA}$  elongation.

Our past work has shown that the displacement extent of the molecular plateau in a 2D histogram is related to the molecular backbone length.<sup>28</sup> Since both the *cis-Si5* and *trans-Si5* show



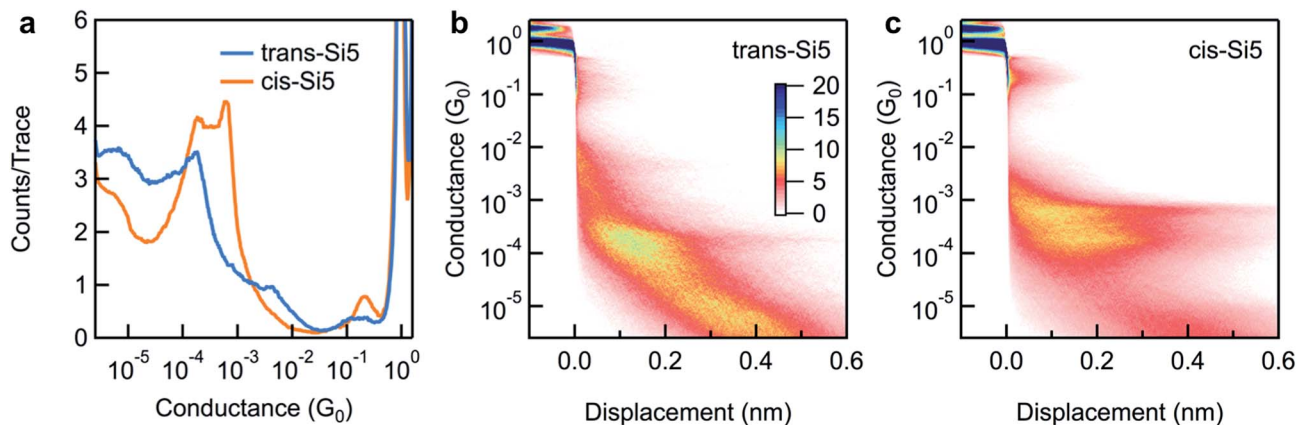


Fig. 3 (a) Logarithmically binned one-dimensional conductance histogram of *cis*-Si5 (orange) and *trans*-Si5 (blue). Histograms are made without data selection and normalized by the total number of traces. (b) and (c) Two-dimensional conductance histograms of *trans*-Si5 and *cis*-Si5 respectively, made from the same data as in (a).

similar plateau lengths in their 2D histograms, we can conclude that the lower intensity observed for *trans*-Si5 in the 1D histogram is a result of fewer junctions formed with this isomer. It has been shown computationally<sup>29–31</sup> and experimentally<sup>16</sup> that linear oligosilanes attain maximum elongation and conductance as they are near *anti* conformations where all backbone dihedral angles are 180°. Such *anti* conformations are not accessible in the cyclopentasilane molecules here because of the intrinsic dihedral constraints of tetrahedral bonding geometries in the rings. We would therefore expect that conductance is lower in cyclic oligosilane pathways in contrast to their equivalent linear counterparts considering one of the two pathways can be completely suppressed due to unfavorable dihedrals. Two possible through-bond conduction pathways occur in the cyclopentasilane from one anchor group to the other: a trisilane and tetrasilane pathway. We compare the conductance properties of the cyclopentasilane molecules with the linear Si3 and Si4 oligosilane (see ESI Fig. S1 and S2†).<sup>16</sup> In contrast, we find that the higher conductance peak value of *cis*-Si5 is between that of Si3 and Si4 while the lower conductance peak value is lower than that of the Si4. This distinct double-peak conductance feature we observed for *cis*-Si5 indicates that cyclopentasilanes are significantly different from linear silanes. To understand these phenomena further, we turn to *ab initio* calculations carried out using DFT to investigate both the conformers of each isomer that are likely to form junctions at room temperature and their computed conductance values.

We examine the conductance behavior of a large number of conformers of *cis*-Si5 and *trans*-Si5 by calculating the transmission with a combined DFT and non-equilibrium Green's functions approach.<sup>32</sup> Our aim is to understand the impact of the molecular conformation on conductance; we do not intend to quantitatively compare DFT results with experiment due to errors inherent to DFT.<sup>33,34</sup> We create the full set of conformers for both *cis*-Si5 and *trans*-Si5 by varying the Si(CH<sub>3</sub>)<sub>2</sub>-Si-CH<sub>2</sub>-S dihedrals around their threefold torsional axis while keeping the terminal Si-CH<sub>2</sub>-S-CH<sub>3</sub> dihedrals in *anti*-configuration (180°). This procedure yields 93 conformers each. We optimize the structures to a force threshold of 0.02 eV Å<sup>-1</sup> using DFT with

the PBE exchange–correlation functional<sup>35</sup> and double- $\zeta$  plus polarization basis sets as implemented in ASE<sup>36</sup> and GPAW.<sup>37,38</sup> After this process, we are left with 84 *cis*-Si5 and 86 *trans*-Si5 conformers in their local energy minima. Details on the conformer nomenclature and the Boltzmann distribution at room temperature are included in ESI Section IV.1 and IV.2.† We have not calculated the energy barriers between these conformers, but a previous report shows the energy barriers are quite low for a simpler unsubstituted cyclopentasilane.<sup>21</sup>

Next, we attach gold electrodes onto the calculated vacuum conformers. In principle, each conformer can bind to the electrodes in 16 different idealized configurations, as the Si-CH<sub>2</sub>-S-Au dihedral of each linker can be in either the *ortho* ( $\pm 90^\circ$ ) or *transoid* ( $\pm 170^\circ$ ) conformation. However, the majority of these structures are unrealistic, as parts of the molecule will block the electrodes from binding to the linker group. After applying an algorithm to exclude the sterically unfeasible junction structures, we generate a complete set of junction geometries for all vacuum conformers. We place the molecule between two 4-atom Au-pyramids on 4 × 4 fcc Au(111) surfaces and relax the molecule to 0.05 eV with the Au-atoms fixed using DFT with the PBE exchange–correlation functional. A single- $\zeta$  basis set is used for the Au-surface and double- $\zeta$  plus polarization basis sets are used for the Au-pyramids and molecule. Finally the transmission is calculated using double- $\zeta$  plus polarization basis sets for all atoms. Descriptions of the junction construction algorithm and the computational details are included in ESI Section IV.3.†

We optimize and calculate the transmissions for a total of 279 *trans*-Si5 junctions and 211 *cis*-Si5 junctions. Previous studies for linear systems indicate that the geometry with the terminal methyl group in *ortho*-configuration (equivalent to Au-S-CH<sub>2</sub>-Si dihedrals in *anti*) is dominant as the junction is fully elongated. However, the cyclic pentasilane is structurally very different from the equivalent linear systems. In vacuum the most stable configuration for cyclic pentasilane is CH<sub>3</sub>-S-CH<sub>2</sub>-Si dihedrals in the *anti*-configuration. Therefore, we hypothesize that the initial junction structure binds to the electrodes with Au-S-CH<sub>2</sub>-Si dihedrals in *ortho*-configuration and proceed



to analyze the results for junctions with this geometry alone in the manuscript. A detailed discussion of binding geometries and the transmissions for other electrode configurations (*ortho/anti* and *anti/anti*) are included and discussed in ESI Section IV.5 and IV.6.†

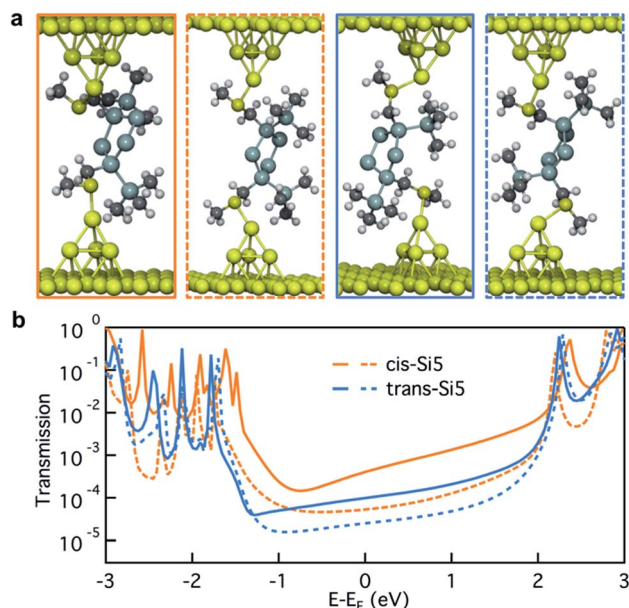


Fig. 4 (a) Geometries and (b) transmission curves of two example conformers of *cis*-Si5 and *trans*-Si5 (solid orange: *cis*-4-envelope-f2; dashed orange: *cis*-1-twist-e2; solid blue: *trans*-1-envelope-b4; dashed blue: *trans*-1-envelope-b3). Methyl groups on the ring have been removed for clarity.

In Fig. 4a, we illustrate the optimized junction structures for sample *cis*-Si5 and *trans*-Si5 conformers and plot their transmissions in Fig. 4b. Due to the structural variation in these junction geometries, the transmission close to the Fermi energy varies considerably. Considering the vast conformational flexibility of the molecule, we do not think that each of the experimental conductance peaks in Fig. 3a can originate from a single dominant conformer. Instead we hypothesize that a number of conformations can be accessed at different junction lengths during the junction elongation. To test this hypothesis we analyze the structural information for 74 *cis*-Si5 and 91 *trans*-Si5 junction conformations optimized with Au-S-CH<sub>2</sub>-Si dihedrals in *ortho*-configuration (the full set of junctions with *ortho/ortho* contact geometry).

In Fig. 5a we compare the calculated conductance for *cis*-Si5 and *trans*-Si5 by generating the histogram of the transmissions at the Fermi energy with the contribution from each conformer weighted by its vacuum population at 300 K. The calculated histograms do not fully represent the experimental data as we do not pull the system or allow it to switch from one conformation to another. The shapes of these calculated histograms are sensitive to the bin-size and the method used to calculate the vacuum energies (see ESI Section IV.2†) therefore should not be over-interpreted. We see that in agreement with the experiment, the transmissions for *cis*-Si5 are distributed at higher values than the transmissions for *trans*-Si5. Although the exact values are underestimated, we note that this is the analysis for *ortho/ortho* contact geometry only. Further discussion is included in ESI Section IV.4 and IV.6.†

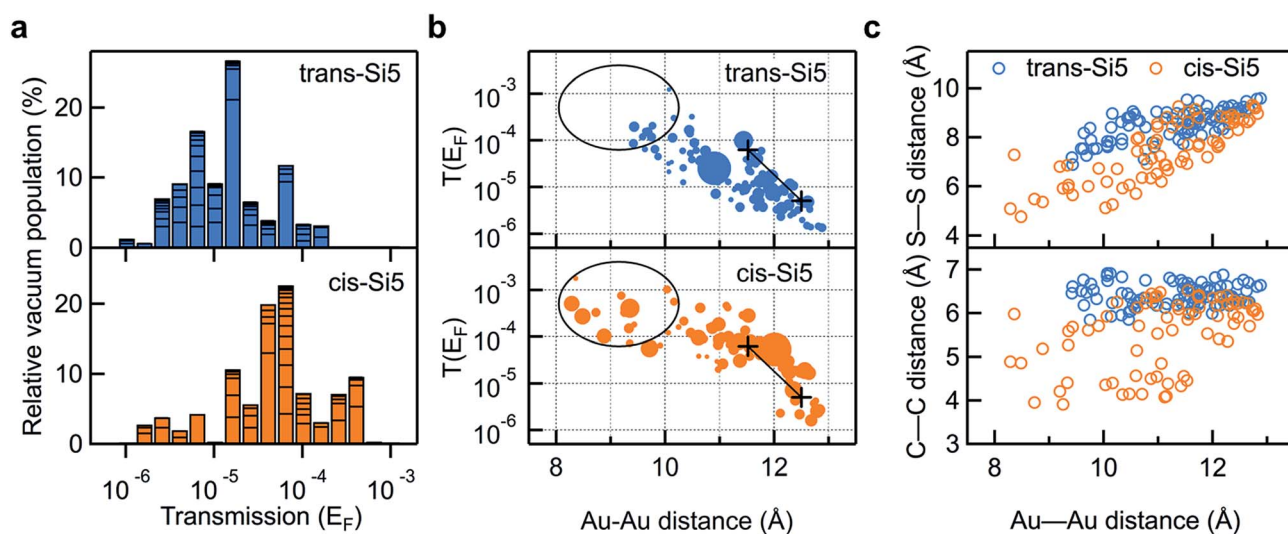


Fig. 5 (a) Logarithmically binned histogram of transmission at Fermi energy of the 91 *trans*-Si5 and 74 *cis*-Si5 conformers. The horizontal stack lines in the bars indicate the vacuum population of each conformer. The histogram is normalized to sum up to 100%. (b) Transmission at Fermi energy plotted against the Au-Au junction distance for each *trans*-Si5 and *cis*-Si5 conformer bridged between four-atom Au pyramids. For easier visualization, the size of each dot has been scaled by  $1/(1 + E)$ , where  $E$  is the relative vacuum energy of each conformer in units of  $kT$  at 300 K, see Tables S1 and S2 in ESI.† Black+ are the calculated transmissions for the two configurations of the linear Si3 with both terminal Au-S-CH<sub>2</sub>-Si dihedrals in *ortho* conformations. Black circles and lines highlight the difference between the two isomers. (c) S-S (upper panel) and C-C junction distance (lower panel) plotted against the Au-Au junction distance for each *trans*-Si5 and *cis*-Si5 conformer. S refers to sulfur; C refers to the CH<sub>2</sub>-group that bridges the silicon ring and the methylsulfide group. All three plots share the same color scheme: orange for *cis*-Si5 and blue for *trans*-Si5.



To compare the experimental data of conductance as a function of junction elongation, we plot the transmission of each conformer at the Fermi energy against the Au–Au distance of the junction in Fig. 5b. The size of each dot scales with the energy of the conformer (in units of  $kT$ ) in vacuum by  $1/(1 + E)$ . Therefore a larger dot corresponds to a conformer with higher vacuum population. First, we note that more *cis*-Si5 conformers are populated at short Au–Au lengths (highlighted in black circles) and obtain higher transmission compared with *trans*-Si5, which agrees with what we observe in the experiment (Fig. 3). Both plots indicate that the junction length can reach an Au–Au separation of 8–13 Å, which would yield a step length of around 1–6 Å in the 2-dimensional histograms considering the distance that the Au electrodes snap back (6–8 Å) after the Au point contact ruptures.<sup>28,39–41</sup> We note that the snap back of the Au electrodes is not considered in other cases, such as the STM current-distance technique where the Au tip is positioned above the Au substrate (no Au–Au contact) before forming a molecular junction.<sup>42</sup> The transmissions for both *cis*-Si5 and *trans*-Si5 conformers decay with an increasing Au–Au distance, however, *cis*-Si5 conformers have higher transmissions than *trans*-Si5 conformers at the same junction length. The transmission data suggests that the different conductivity for *cis*-Si5 and *trans*-Si5 may be due to intrinsic structural differences beyond the junction length.

The transmission of the silanes is very sensitive to the dihedrals of the backbone,<sup>29,43</sup> however, we do not find any significant difference in backbone dihedrals between *cis*-Si5 and *trans*-Si5, as detailed in ESI Section IV.5 and IV.6.† Next, apart from the backbone  $\sigma$ -conjugation, we also consider the transmission originating from through-space interactions in the molecule, *i.e.*, non-nearest neighbor interactions that might contribute to the different conductance in *cis*-Si5 and *trans*-Si5. As the molecule is spatially crowded, intramolecular distances between atoms are relatively small, so that through-space interactions may give rise to a significant contribution to the total transmission. This contribution to the transmission has recently been thoroughly studied in  $\pi$ -conjugated helicenes,<sup>44–46</sup> and have also been demonstrated to be significant in cyclic and linear silanes.<sup>12,13,43</sup> We note the distinction between through-bond and through-space interactions is a bit arbitrary and no difference was found between the physical mechanisms of these two processes.<sup>43,47</sup> In Fig. 5c we plot two decisive through-space distances of the molecule, the S–S and CH<sub>2</sub>–CH<sub>2</sub> linker-to-linker distances, against the Au–Au distance of the junction. For junctions of the same Au–Au length, the S–S and CH<sub>2</sub>–CH<sub>2</sub> distances are consistently shorter for *cis*-Si5 than for *trans*-Si5. This is a geometrical consequence of *cis*–*trans* isomerism: while the absolute values of backbone dihedrals are similar, the intramolecular distances in the *trans*-isomer are longer. The systematically higher transmission for *cis*-Si5 in junction with the same Au–Au length is a direct consequence of this structural difference of the two isomers.

Finally, we re-examine the conductance measurements with the theoretical conformational analysis. As discussed above, when considering the experimental conductance peak obtained for *cis*-Si5, *trans*-Si5 and linear Si3, we see that the cyclic

isomers exhibit lower conductance. However, for the linear Si3, junctions with one or both terminal Au–S–CH<sub>2</sub>–Si dihedrals in *ortho* conformation have a lower conductance than the peak conductance measured for junctions with both dihedrals in the *anti* conformation. Thus, the low conductance measured for the cyclic systems could result from some of their dihedrals never achieving a 180° *anti*-configuration, which maximizes the conductance.<sup>16,29</sup> The Si–SiMe<sub>2</sub>–Si–CH<sub>2</sub> dihedrals range from *gauche* (60°) to deviant orientation ( $\sim 140^\circ$ )<sup>48</sup> (see ESI Fig. S8†). In contrast, a linear silane achieves an *anti* conformation with dihedral angles close to 180° along its entire backbone in its energetically favorable conformation, giving the linear Si3 and Si4 the best orbital delocalization and a higher conductance than is achievable for the cyclic structures. Calculations also support the finding that the tetrasilane path within the cyclic pentasilane has a Si–SiMe<sub>2</sub>–SiMe<sub>2</sub>–Si dihedral smaller than 50° (see ESI Fig. S8†) and therefore does not contribute significantly to the *cis*-Si5 or *trans*-Si5 conductance when compared with the trisilane path (see ESI Fig. S7†).

## Conclusions

To conclude, in this study, we synthesize *cis* and *trans* isomers of cyclic pentasilane with aurophilic methylsulfide anchor groups, measure their conductance using the STM-BJ technique and compare these results with DFT calculations. We show that the large conformational freedom in these systems controls both the probability of junction formation and the measured conductance. We attribute the reduced conductance of the studied cyclic structures compared with linear chains to the diminished conjugation in Si–Si  $\sigma$ -bond together with through-space coupling effect when an all-*anti* conformation cannot be achieved. Our results illustrate the importance of bond orientation in  $\sigma$ -coupled silicon systems that is comparable to the impact of dihedral angles in  $\pi$ -conjugated carbon structures.<sup>49</sup>

## Acknowledgements

H. L. is supported by the Semiconductor Research Corporation and New York CAIST program. We thank the NSF for the support of experimental studies under grant no. CHE-1404922. G. C. S. and M. H. G. received funding from the Danish Council for Independent Research|Natural Sciences. Z. S., P. L., and S. X. are sponsored by National Natural Science Foundation of China (No. 21473113), Program for Professor of Special Appointment (Eastern Scholar) at Shanghai Institutions of Higher Learning (No. 2013-57), “Shuguang Program” supported by Shanghai Education Development Foundation and Shanghai Municipal Education Commission (14SG40), Program for Changjiang Scholars, Innovative Research Team in University (IRT1269), and International Joint Laboratory on Resource Chemistry (IJLRC). T. A. S. is supported by the NSF Graduate Research Fellowship under grant no. 11-44155. Single crystal X-ray diffraction was performed at the Shared Materials Characterization Laboratory supported by Columbia University.



## Notes and references

- M. Schulz, *Nature*, 1999, **399**, 729–730.
- Y. Cui and C. M. Lieber, *Science*, 2001, **291**, 851–853.
- J. Lu and S. Nagase, *Phys. Rev. Lett.*, 2003, **90**, 115506.
- L. Tao, E. Cinquanta, D. Chiappe, C. Grazianetti, M. Fanciulli, M. Dubey, A. Molle and D. Akinwande, *Nat. Nanotechnol.*, 2015, **10**, 227–231.
- N. P. Guisinger, M. E. Greene, R. Basu, A. S. Baluch and M. C. Hersam, *Nano Lett.*, 2004, **4**, 55–59.
- S. Lenfant, C. Krzeminski, C. Delerue, G. Allan and D. Vuillaume, *Nano Lett.*, 2003, **3**, 741–746.
- M. C. Hersam, N. P. Guisinger and J. W. Lyding, *Nanotechnology*, 2000, **11**, 70.
- T. Rakshit, G.-C. Liang, A. W. Ghosh and S. Datta, *Nano Lett.*, 2004, **4**, 1803–1807.
- S. Sergani, Y. Furmansky and I. Visoly-Fisher, *Nanotechnology*, 2013, **24**, 455204.
- M. Nakamura, S. Yoshida, T. Katayama, A. Taninaka, Y. Mera, S. Okada, O. Takeuchi and H. Shigekawa, *Nat. Commun.*, 2015, **6**, 8465.
- W. Hong, H. Li, S. X. Liu, Y. Fu, J. Li, V. Kaliginedi, S. Decurtins and T. Wandlowski, *J. Am. Chem. Soc.*, 2012, **134**, 19425–19431.
- R. Emanuelsson, H. Löfås, A. Wallner, D. Nauroozi, J. Baumgartner, C. Marschner, R. Ahuja, S. Ott, A. Grigoriev and H. Ottosson, *Chem. –Eur. J.*, 2014, **20**, 9304–9311.
- H. Löfås, R. Emanuelsson, R. Ahuja, A. Grigoriev and H. Ottosson, *J. Phys. Chem. C*, 2013, **117**, 21692–21699.
- R. S. Klausen, J. R. Widawsky, M. L. Steigerwald, L. Venkataraman and C. Nuckolls, *J. Am. Chem. Soc.*, 2012, **134**, 4541–4544.
- W. Chen, J. R. Widawsky, H. Vazquez, S. T. Schneebeli, M. S. Hybertsen, R. Breslow and L. Venkataraman, *J. Am. Chem. Soc.*, 2011, **133**, 17160–17163.
- T. A. Su, H. Li, M. L. Steigerwald, L. Venkataraman and C. Nuckolls, *Nat. Chem.*, 2015, **7**, 215–220.
- S. M. Whittaker, M. Brun, F. Cervantes-Lee and K. H. Pannell, *J. Organomet. Chem.*, 1995, **499**, 247–252.
- R. Fischer, D. Frank, W. Gaderbauer, C. Kayser, C. Mechtler, J. Baumgartner and C. Marschner, *Organometallics*, 2003, **22**, 3723–3731.
- C. Marschner, *Eur. J. Inorg. Chem.*, 1998, 221–226.
- A. Wallner, J. Hlina, T. Konopa, H. Wagner, J. Baumgartner, C. Marschner and U. Flörke, *Organometallics*, 2010, **29**, 2660–2675.
- V. S. Mastryukov, M. Hofmann and H. F. Schaefer, *J. Phys. Chem. A*, 1999, **103**, 5581–5584.
- Y. Naruse, J. Ma, K. Takeuchi, T. Nohara and S. Inagaki, *Tetrahedron*, 2006, **62**, 4491–4497.
- M. Zhao and B. M. Gimarc, *Inorg. Chem.*, 1996, **35**, 5378–5386.
- C. L. Wadsworth and R. West, *Organometallics*, 1985, **4**, 1664–1668.
- B. Xu and N. J. Tao, *Science*, 2003, **301**, 1221–1223.
- L. Venkataraman, J. E. Klare, I. W. Tam, C. Nuckolls, M. S. Hybertsen and M. L. Steigerwald, *Nano Lett.*, 2006, **6**, 458–462.
- M. T. González, S. Wu, R. Huber, S. J. van der Molen, C. Schönenberger and M. Calame, *Nano Lett.*, 2006, **6**, 2238–2242.
- M. Kamenetska, M. Koentopp, A. C. Whalley, Y. S. Park, M. L. Steigerwald, C. Nuckolls, M. S. Hybertsen and L. Venkataraman, *Phys. Rev. Lett.*, 2009, **102**, 126803.
- C. B. George, M. A. Ratner and J. B. Lambert, *J. Phys. Chem. A*, 2009, **113**, 3876–3880.
- A. Bande and J. Michl, *Chem. –Eur. J.*, 2009, **15**, 8504–8517.
- H. A. Fogarty, C.-H. Ottosson and J. Michl, *J. Mol. Struct.*, 2000, **556**, 105–121.
- J. Chen, K. S. Thygesen and K. W. Jacobsen, *Phys. Rev. B: Condens. Matter Mater. Phys.*, 2012, **85**, 155140.
- S. Y. Quek, L. Venkataraman, H. J. Choi, S. G. Louie, M. S. Hybertsen and J. B. Neaton, *Nano Lett.*, 2007, **7**, 3477–3482.
- M. Koentopp, K. Burke and F. Evers, *Phys. Rev. B: Condens. Matter Mater. Phys.*, 2006, **73**, 121403.
- J. P. Perdew, K. Burke and M. Ernzerhof, *Phys. Rev. Lett.*, 1996, **77**, 3865–3868.
- S. R. Bahn and K. W. Jacobsen, *Comput. Sci. Eng.*, 2002, **4**, 56–66.
- J. J. Mortensen, L. B. Hansen and K. W. Jacobsen, *Phys. Rev. B: Condens. Matter Mater. Phys.*, 2005, **71**, 035109.
- A. H. Larsen, M. Vanin, J. J. Mortensen, K. S. Thygesen and K. W. Jacobsen, *Phys. Rev. B: Condens. Matter Mater. Phys.*, 2009, **80**, 195112.
- A. I. Yanson, G. R. Bollinger, H. E. van den Brom, N. Agrait and J. M. van Ruitenbeek, *Nature*, 1998, **395**, 783–785.
- M. T. González, E. Leary, R. García, P. Verma, M. Á. Herranz, G. Rubio-Bollinger, N. Martín and N. Agrait, *J. Phys. Chem. C*, 2011, **115**, 17973–17978.
- A. M. Christian, D. Dapeng, S. J. v. d. Z. Herre and M. v. R. Jan, *New J. Phys.*, 2008, **10**, 065008.
- M. S. Inkpen, M. Lemmer, N. Fitzpatrick, D. C. Milan, R. J. Nichols, N. J. Long and T. Albrecht, *J. Am. Chem. Soc.*, 2015, **137**, 9971–9981.
- G. C. Solomon, C. Herrmann, T. Hansen, V. Mujica and M. A. Ratner, *Nat. Chem.*, 2010, **2**, 223–228.
- J. Vacek, J. V. Chocholousova, I. G. Stara, I. Stary and Y. Dubi, *Nanoscale*, 2015, **7**, 8793–8802.
- Y.-D. Guo, X.-H. Yan, Y. Xiao and C.-S. Liu, *Sci. Rep.*, 2015, **5**, 16731.
- Y. Tsuji and R. Hoffmann, *Chem. –Eur. J.*, 2016, **22**, 4878–4888.
- R. Hoffmann, *Acc. Chem. Res.*, 1971, **4**, 1–9.
- J. Michl and R. West, *Acc. Chem. Res.*, 2000, **33**, 821–823.
- L. Venkataraman, J. E. Klare, C. Nuckolls, M. S. Hybertsen and M. L. Steigerwald, *Nature*, 2006, **442**, 904–907.

