



香港城市大學
City University of Hong Kong

專業 創新 胸懷全球
Professional · Creative
For The World

CityU Scholars

The Effect of Fear of the COVID-19 on Depression Among Chinese Outbound Students Studying Online in China Amid the COVID-19 Pandemic Period The Role of Resilience and Social Support

Chen, Yikang; Liu, Yifan; Zhang, Yuxuan; Li, Zheng; Zhou, Tianshu

Published in:
Frontiers in Psychology

Published: 01/10/2021

Document Version:
Final Published version, also known as Publisher's PDF, Publisher's Final version or Version of Record

License:
CC BY

Publication record in CityU Scholars:
[Go to record](#)

Published version (DOI):
[10.3389/fpsyg.2021.750011](https://doi.org/10.3389/fpsyg.2021.750011)

Publication details:
Chen, Y., Liu, Y., Zhang, Y., Li, Z., & Zhou, T. (2021). The Effect of Fear of the COVID-19 on Depression Among Chinese Outbound Students Studying Online in China Amid the COVID-19 Pandemic Period: The Role of Resilience and Social Support. *Frontiers in Psychology*, 12, [750011]. <https://doi.org/10.3389/fpsyg.2021.750011>

Citing this paper

Please note that where the full-text provided on CityU Scholars is the Post-print version (also known as Accepted Author Manuscript, Peer-reviewed or Author Final version), it may differ from the Final Published version. When citing, ensure that you check and use the publisher's definitive version for pagination and other details.

General rights

Copyright for the publications made accessible via the CityU Scholars portal is retained by the author(s) and/or other copyright owners and it is a condition of accessing these publications that users recognise and abide by the legal requirements associated with these rights. Users may not further distribute the material or use it for any profit-making activity or commercial gain.

Publisher permission

Permission for previously published items are in accordance with publisher's copyright policies sourced from the SHERPA RoMEO database. Links to full text versions (either Published or Post-print) are only available if corresponding publishers allow open access.

Take down policy

Contact lbscholars@cityu.edu.hk if you believe that this document breaches copyright and provide us with details. We will remove access to the work immediately and investigate your claim.



The Effect of Fear of the COVID-19 on Depression Among Chinese Outbound Students Studying Online in China Amid the COVID-19 Pandemic Period: The Role of Resilience and Social Support

Yikang Chen^{1*}, Yifan Liu¹, Yuxuan Zhang¹, Zheng Li¹ and Tianshu Zhou²

¹ Department of Social and Behavioural Sciences, City University of Hong Kong, Kowloon, Hong Kong, SAR China,

² Department of Asian and International Studies, City University of Hong Kong, Kowloon, Hong Kong, SAR China

OPEN ACCESS

Edited by:

Juan Carlos Oyanedel,
Andres Bello University, Chile

Reviewed by:

Rene Gempp,
Diego Portales University, Chile
Andrés Antonio Rubio,
Andres Bello University, Chile

*Correspondence:

Yikang Chen
yk.chen@my.cityu.edu.hk

Specialty section:

This article was submitted to
Educational Psychology,
a section of the journal
Frontiers in Psychology

Received: 30 July 2021

Accepted: 10 September 2021

Published: 15 October 2021

Citation:

Chen Y, Liu Y, Zhang Y, Li Z and
Zhou T (2021) The Effect of Fear
of the COVID-19 on Depression
Among Chinese Outbound Students
Studying Online in China Amid
the COVID-19 Pandemic Period:
The Role of Resilience and Social
Support. *Front. Psychol.* 12:750011.
doi: 10.3389/fpsyg.2021.750011

Objective: The present study focused on examining fear of the coronavirus disease 2019 (COVID-19) is correlated with depression and explored the potential role of resilience and social support on the association between fear of the COVID-19 (FoC) and depression among Chinese outbound students studying online in China amid the COVID-19 pandemic period.

Methods: A total of 476 Chinese outbound students from different universities worldwide, currently studying *via* online mode in China, completed an online survey including measures on FoC, resilience, social support, and depression.

Results: (1) Fear of the COVID-19 was positively correlated with depression and negatively correlated with resilience and social support. Both resilience and social support were negatively correlated with depression. Social support showed a positive correlation with resilience. (2) The effect of FoC on depression mainly occurred through two paths: the mediating effect of resilience and the moderating effect of resilience. However, the moderating effect of social support on the association between FoC and depression was not sustained in this study.

Conclusion: This study indicated the mediating and moderating effects of resilience on the association between FoC and depression among Chinese outbound students studying online in China during the COVID-19 pandemic period. The current findings confirmed that resilience has significant implications in preventing negative mental states under the COVID-19 context among this particular group.

Keywords: fear of COVID-19, depression, resilience, social support, Chinese outbound students, COVID-19 pandemic

INTRODUCTION

Due to the rapid spread of the coronavirus disease 2019 (COVID-19) pandemic, governments worldwide have imposed travel restrictions and most higher education institutions have switched to online learning (Sahu, 2020; Walke et al., 2020). However, these rapid changes have caused a drastic increase in psychological problems for college students worldwide and put international students into a problematic situation (Al-Marouf et al., 2020; Pierce et al., 2020; Wang et al., 2020).

Moreover, the stressful situation under the COVID-19 pandemic period has severely harmed the mental health of the Chinese students studying outbound (Ma and Miller, 2020). In addition to the COVID-19 pandemic-related concerns, the Chinese outbound students (COSs) also confront isolation and discrimination as a result of China being the first country to experience the COVID-19 pandemic period (Zhai and Du, 2020), which has disrupted their studies and prompted a slew of psychological disorders such as fear and depression. Due to the unpredictability of the COVID-19 pandemic, many COSs have returned to mainland China to learn *via* online mode (Mok et al., 2021). Therefore, those COSs studying online in China have been a brand new and unique group and the study on their psychological status influenced by the COVID-19 pandemic is urgently important.

Fear of the COVID-19 (FoC) is a negative emotion or a negative response toward any danger or health threats such as harm to oneself physically, any discrimination, or isolation related to the COVID-19 (Witte and Allen, 2000; Zhang et al., 2020). Depression is a clinical mental illness comprised of a negative emotional state and is the most mainstream consequence of the COVID-19 pandemic (Kendall et al., 1987; Rajkumar, 2020). Many individuals are susceptible to depression as a result of the COVID-19 pandemic and subsequent events (Tang et al., 2020). Therefore, we speculated that FoC may be associated with depression. The present study focused on examining whether FoC is correlated with depression among COSs studying online amid the COVID-19 pandemic period. Moreover, previous FoC-related research has found that FoC may indirectly affect mental health issues *via* other resources (Rodríguez-Hidalgo et al., 2020; Belen, 2021). However, few studies extended to the effects of the resilience and social support of an individual on depression during the COVID-19 pandemic period. Aneshensel and Stone (1982) point out that social support has a practical buffering effect in preventing depressive symptoms. Meanwhile, resilience can also operate as an inner resource against negative psychological symptoms when an individual is faced with adversity. Thus, based on the buffering model of social support (Aneshensel and Stone, 1982) and resilience theory (Van Breda, 2001), this study also explored the potential role of resilience and social support on the association between FoC and depression among the COSs studying online amid the COVID-19 pandemic period.

Fear of the COVID-19 and Depression

Previous research has shown that there is a significant positive correlation between fear of FoC and depression

(Bendau et al., 2021; Sakib et al., 2021). Kaparounaki et al. (2020) found a high increase in overall depression score with increased suicidal thoughts and other anxiety symptoms throughout the first period of nationwide lockdown in Greece. Increasing FoC in the COSs caused by the quarantine and lockdown restrictions has resulted in rising uncertainties among students with regard to their academic and career efforts (Feng et al., 2021; Yang et al., 2021), and misinformation during the COVID-19 pandemic was also found to be related to FoC (Gabarron et al., 2021). Previous research has shown that FoC triggers depression (Egunjobi, 2020; Al Majali and Alghazo, 2021; Pak et al., 2021). A growing body of research provides evidence that the COVID-19-related fear is a threat to mental health and higher FoC is linked with an increased depression (Ahorsu et al., 2020; Bakioğlu et al., 2020; Yıldırım et al., 2021). Saricali et al. (2020) point out that FoC puts individuals in a high-tension state and makes them feel helpless leading to depression. Therefore, this study hypothesized that:

Hypothesis 1 (H1): FoC will be positively correlated with depression.

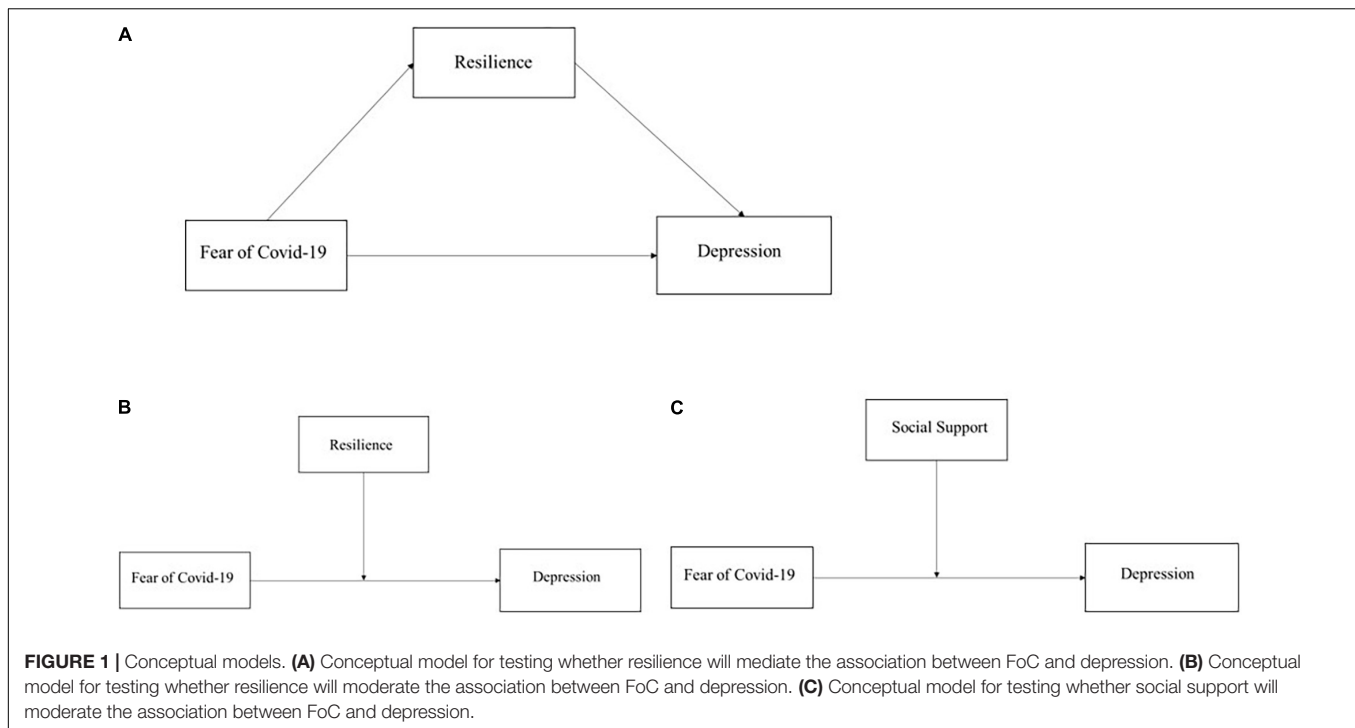
The Role of Resilience

The ability of a person to recover from the traumatic events is referred to as resilience, also called the capacity to learn to live in times of fear and uncertainty and the ability to adjust to the difficult and problematic experiences in life (Meichenbaum, 2005; Herrman et al., 2011). Past studies have shown that resilience has the ability to reduce negative emotions such as depression (Songprakun and McCann, 2015; Anyan and Hjemdal, 2016). While psychological consequences still differ among people, resilience plays a crucial role in describing such individual differences. It can be termed either as an attribute, a result, or a process (Fletcher and Sarkar, 2013). Luthar et al. (2000) describe resilience as a changing approach that encompasses adjustment in times of adverse circumstances. Individuals with higher resilience can better recover from the trauma experiences (Schaubroeck et al., 2011).

However, the role of resilience in the association between FoC and depression is not clear. Previous research has shown that resilience plays a mediating role in the relationship between FoC and negative mental states such as stress (Peker and Cengiz, 2021), anxiety (Seçer et al., 2020), and distress (Lorente et al., 2021). Resilience represents the certain traits that allow a person to adjust to the events that they experience (Connor and Davidson, 2003), and it has a mediating effect between fear and depression (Seçer et al., 2020), especially during the COVID-19 pandemic period (Yıldırım et al., 2020). Therefore, the present study proposed that those COSs with lower levels of resilience would have higher levels of depression. Thus, this study aimed to explore that:

Hypothesis 2 (H2): Whether low levels of resilience will mediate the association between FoC and depression [as shown in the conceptual framework in **Figure 1A**].

On the other hand, the existing studies have also revealed the moderating effect of resilience on depression (Wingo et al., 2010; Catalano et al., 2011). Havnen et al. (2020)



demonstrated that resilience worked as a moderator in relieving depressive symptoms throughout the COVID-19 pandemic period. Meanwhile, recent empirical studies indicated that when resilience works as a moderator, it has a buffering effect on depression caused by the negative consequences associated with the COVID-19 pandemic (Aguilar-Quintana et al., 2021; Schierberl Scherr et al., 2021). Considering the buffering effect of resilience on depression, the present research also proposed to explore the potential buffering effects of resilience on the relationship between the FoC and depression of the COSs studying online in China. Thus, this study aimed to explore that:

Hypothesis 3 (H3): Whether the low levels of resilience will moderate the association between FoC and depression (as shown in the conceptual framework in **Figure 1B**).

The Moderating Role of Social Support

Social support has been shown to function as a buffering variable in reducing the negative consequences of mental illness (Cohen and Wills, 1985; Trepte et al., 2015). Hornstein and Eisenberger's (2017) research (2017) illustrates that social support has a preventative effect on the fear-related adverse effects; within this context, social support is essential to help aid the psychological problems (Li et al., 2021). College students with lower levels of social support are more likely to suffer from mental illnesses (Hefner and Eisenberg, 2009). Previous research has shown that social support is negatively correlated with depression (McDougall et al., 2016).

Besser and Priel (2008) found that social support affects depression by acting as a moderator of death-related fears, but not the COVID-19-related fears. However, a previous study revealed

that social support is an influencing moderator of depression in the Chinese student groups (Zhou et al., 2013; Hou et al., 2020). Therefore, the present study argues that for the COSs with less social support, their depression levels are higher than those the COSs with lower FoC. Although previous research has shown that social support has a buffering effect on depression (Rueger et al., 2016), less support is extended to the influence of FoC. Thus, based on the previous evidence, this study hypothesized that:

Hypothesis 4 (H4): Low levels of social support will moderate the association between FoC and depression (as shown in the conceptual framework in **Figure 1C**).

MATERIALS AND METHODS

Participants and Procedure

Considering the social-distancing requirement during the COVID-19 pandemic period, all the data were collected through an online self-administered survey questionnaire. This study involved 476 COSs, including 164 males (34.5%) and 312 females (65.5%), currently studying *via* online mode in China from the different universities worldwide. The survey was conducted from March 2021 to May 2021 and all the participants had returned to China before January 2021. For the age range, 243 participants ranged from 18 to 22 years (51.1%), 206 participants ranged from 23 to 27 years (43.3%), and 27 participants were older than 27 years (5.7%). Meanwhile, 238 participants were undergraduate students (50.0%) and 238 participants were graduate students, which including 213 participants at the master level (44.7%) and 25 participants at the doctoral level (5.3%). The reporting

studying area indicates that 31.1% ($n = 148$) of participants were studying in Hong Kong special administrative region (SAR)/Macau SAR/Taiwan of China, 27.7% ($n = 132$) of participants were studying in North America (including the United States and Canada), 19.1% ($n = 91$) of participants were studying in the United Kingdom or European Union countries, 16.6% ($n = 79$) of participants were studying in the Asian countries (e.g., Japan, South Korea), 5.3% ($n = 25$) of participants were studying in Australia or New Zealand, and 0.2% ($n = 1$) of participants were studying in the other regions. The demographic information is shown in **Table 1**.

MEASURES

Demographic Information

Participants provided age (1 = ranged from 18 to 22 years; 2 = ranged from 23 to 27 years; 3 = older than 27 years), sex (0 = male; 1 = female), education level (1 = undergraduate students; 2 = master-level students; 3 = doctoral-level students), and outbound studying region.

Fear of the COVID-19

Fear of the COVID-19 was measured by using the Fear of the COVID-19 Scale (FCV-19S) (Ahorsu et al., 2020). The FCV-19S contains seven items that measured FoC content with two domains: physical response of fear (four items) and fear thinking (three items). Items are measured on a 5-point Likert scale (from 1 = disagree to 5 = completely agree) where a higher mean score indicates higher FoC (Ahorsu et al., 2020). The previous study has validated the FCV-19S in different contents including

Chinese content (Chi et al., 2021). The Cronbach's alpha of the FCV-19S was 0.83.

Depression

Depression was measured by using the Beck Depression Inventory-II (BDI-II) scale (Beck et al., 1996). The BDI-II contains 21 items that measured the level of depression in the recent 2 weeks; each item was rated on a 4-point scale (from 0 = symptom not present to 3 = symptom strongly present) with a higher mean score indicating a higher degree of depression (Beck et al., 1996). Wang et al. (2011) validated the BDI-II in Chinese content and the Cronbach's alpha of the BDI-II scale was 0.80.

Resilience

Resilience was assessed by using the Connor–Davidson Resilience Scale (CD-RISC) developed by Connor and Davidson (2003). The CD-RISC consists of 25 items rated on a 5-point Likert scale (from 0 = *not true at all* to 4 = *true nearly all the time*) with a higher mean score reflecting higher resilience (Connor and Davidson, 2003). The CD-RISC was validated in a well-used Chinese content by Yu and Zhang (2007) and the Cronbach's alpha of the CD-RISC was 0.91.

Social Support

Social support was measured by using the 6-item COVID-19 Version Perceived Social Support Questionnaire (F-SozU) developed by Sommerlad et al. (2020). This questionnaire is an adapted version of the F-SozU (Kliem et al., 2015) to measure perceived social support during the COVID-19 pandemic period. Each item was rated on a 5-point scale (from 1 = *not at all true* to 5 = *very true*) with a higher mean score reflecting the higher level of perceived social support. The Cronbach's alpha of the F-SozU was 0.83.

Statistical Analysis

The SPSS software version 26.0 was used for the data analysis. The demographic characteristics were analyzed by descriptive analyses. The Pearson correlation was calculated to test the bivariate correlations among FoC, resilience, social support, and depression. According to Hayes (2013), Model 4 and Model 1 in the PROCESS macro for SPSS (version 3.5.3) were used to test the mediating role of resilience as well as the moderating roles of resilience and social support. About 95% CIs of the indirect effects were calculated from 5,000 bootstrap resamples estimates in which mediating and moderating effects are significant at $p < 0.05$ when the CI does not include zero.

RESULTS

Bivariate Correlations Among Study Variables

Descriptive statistics and correlations for all the variables are shown in **Table 2**. FoC was positively correlated with depression ($r = 0.59$, $p < 0.001$) and H1 was supported. Besides, FoC was negatively correlated with resilience ($r = 0.37$, $p < 0.001$) and social support ($r = 0.24$, $p < 0.001$). Both resilience ($r = 0.52$,

TABLE 1 | Demographic information of the participants ($N = 476$).

| Variable | N | Percent |
|------------------------|-----|---------|
| Sex | | |
| Males | 164 | 34.5% |
| Females | 312 | 65.5% |
| Age Range | | |
| 18 to 22 years | 243 | 51.1% |
| 23 to 27 years | 206 | 43.3% |
| above 27 years | 27 | 5.7% |
| Education Level | | |
| Undergraduate | 238 | 50.0% |
| Master Level | 213 | 44.7% |
| Doctoral Level | 25 | 5.3% |
| Studying Region | | |
| HK/MO/TW | 148 | 27.7% |
| North America | 132 | 27.7% |
| UK/EU | 91 | 19.1% |
| Asia | 79 | 16.6% |
| Australia/New Zealand | 25 | 5.3% |
| Others | 1 | 0.2% |

North America including The United States of America and Canada; HK, Hong Kong SAR, China; MO, Macao SAR, China; TW, Taiwan, China; UK, The United Kingdom of Great Britain and Northern Ireland; EU, Countries in the European Union; Asia, Asian countries (excluding China).

$p < 0.001$) and social support ($r = 0.42$, $p < 0.001$) were negatively correlated with depression. Moreover, social support showed a significant positive correlation with resilience ($r = 0.63$, $p < 0.001$).

Role of Resilience

After controlling for sex, age, and education level, the mediating effect of resilience on the association between FoC and depression was analyzed. The results of the regression analysis are shown in **Table 3**.

When sex, age, and education level were included in the regression model as three control variables, the results showed that FoC has a significant positive association with depression ($\beta = 0.583$, $p < 0.001$). Meanwhile, the negative association between FoC and resilience ($\beta = 0.359$, $p < 0.001$) as well as the negative association between resilience and depression ($\beta = 0.357$, $p < 0.001$) was also significant. Moreover, when resilience was used as a mediator, the positive association between FoC and depression ($\beta = 0.455$, $p < 0.001$) was also significant. The bootstrap results of the mediating effect indicated that the indirect effect of FoC on depression was significant ($\beta = 0.113$, $SE = 0.017$, 95% CI = 0.082, 0.148) and the mediating effect caused a variance of 21.89% of the total impact of the models (**Table 4**). As 95% CI in the path did not contain zero value, the results confirmed that H2 was supported.

To investigate the moderating effect of resilience and social support on the association between FoC and depression, the aforementioned covariates were controlled. **Table 5** shows the interaction between FoC and depression from resilience emerged as a significant predictor [$\beta = 0.006$, $p < 0.05$, 95% CI 0.012; 0.001, $R^2 = 0.459$, $F(6,469) = 66.482$, $p < 0.001$]. Additionally, changing $R^2 = 0.007$ statistically due to interactions, $F(1,469) = 5.885$, $p < 0.05$, which means that the moderation explained the 45.96% of the variance in the resilience of the model. Therefore, resilience has a positive significance on the relationship between FoC and depression. The results illustrated the interaction by depicting the regression line of the relationship between FoC and depression at high, medium, and low (+1 SD, mean, -1 SD) resilience scale scores. The graph showed that resilience played a role in narrowing the positive correlation between FoC and depression mentioned in the research literature. The highest levels of depression were found in the individuals who reported low levels of FoC and low resilience (**Figure 2**). Overall, the results of the moderation analysis indicated that the resilience of the individuals attenuated the association between FoC and depression in the COSs. Thus, H3 was supported.

TABLE 2 | Descriptive statistics and correlations between variables ($N = 476$).

| | <i>M</i> | <i>SD</i> | 1 | 2 | 3 | 4 |
|---------------------|----------|-----------|----------|----------|----------|---|
| 1. Fear of COVID-19 | 15.94 | 5.99 | 1 | | | |
| 2. Resilience | 62.97 | 11.77 | -0.37*** | 1 | | |
| 3. Social Support | 3.51 | 0.61 | -0.24*** | 0.63*** | 1 | |
| 4. Depression | 10.11 | 5.30 | 0.59*** | -0.52*** | -0.42*** | 1 |

*** $p < 0.001$.

The Moderating Role of Social Support

After controlling for sex, age, and education level, the moderating effect of social support on the association between FoC and depression was analyzed. Contradictory to H4, the result showed that the moderating role of social support is insignificant. Being a predictor of FoC on depression, social support does not act as a moderator for the relationship [$\beta = 0.002$, $F(6,469) = 58.8261$, $p = 0.956$] (**Table 6**). Thus, H4 was rejected.

DISCUSSION AND CONCLUSION

Discussion

This study examined the mediating effect of resilience as well as the moderating effects of resilience and social support on the relationship between FoC and depression among the COSs studying online amid the COVID-19 pandemic period. The correlational analyses revealed that FoC had a positive relationship with depression, which was consistent with the previous studies that higher FoC is positively correlated with increased depression (Bakioğlu et al., 2020; Al Majali and Alghazo, 2021). The results indicated that FoC is an important trigger for depression among the COSs studying online amid the COVID-19 pandemic period. Marcus et al. (2014) argued that depression is a serious affliction that has a negative impact on the mental health of an individual. Thus, those COVID-19-related fears may increase the likelihood of depressive symptoms, which negatively influence the mental health of the COS.

This study also contributes to the theory by revealing the mechanism through which FoC influences the depression of the COSs studying online in China. Although previous research revealed that FoC is associated with depression, the underlying mechanism was not enough clear. Previous research indicated that mindfulness could help to counter the negative effects of FoC on depression, thus reducing depression (Belen, 2021). This study demonstrated the mediating role of resilience between FoC and depression. Previous research has shown that a higher level of FoC can restrain resilience, thus bombing the depression (Yıldırım et al., 2020), this study further examined that resilience is an effective mediator in the linkage between FoC and depression among the Chinese group. Resilience is mediated by assessing the path from FoC to depression. Weaker resilience is equipped when the individual experiences a higher-level fear mood. The situation of the COSs is different from those of Chinese students studying in the domestic universities in mainland China. They face the cultural differences and changing international circumstances after the COVID-19 outbreak that are complicated. At the same time, the institution of non-native languages and diverse curricula of outbound universities are stressful (Ching et al., 2017). Therefore, the COSs need the strong capability to adjust themselves to deal with fear, difficulty, and uncertainty. Resilience can meet all those requirements of the COSs ensuring that the COSs counter negative situations and enhance their mental health.

The findings of this study also showed that resilience moderated the relationship between FoC and depression, which is consistent with prior research showing that resilience has a

negative and substantial impact on depression (Hjemdal et al., 2011). Individuals with weaker resilience are more likely to experience depressive symptoms. This finding further explains the resilience theory (Van Breda, 2001). Furthermore, those COSs studying online in China also need to endure time differences, network latency, and various emergencies while conducting their online learning. Under the special circumstances of the COVID-19 pandemic period, the COSs with higher resilience are more capable of dealing with social isolation, life stress (Cacioppo et al., 2011), and the threats of various crises (Kimhi et al., 2020). Thus, the COSs with stronger resilience may be better able to withstand the FoC and recover from its negative effects.

The present finding also contributes to the buffering effect in the buffering model of social support (Aneshensel and Stone, 1982). The moderating effect of social support on the association between FoC and depression was not sustained in this study. It was found that social support can be a preventive factor against negative psychological and emotional effects among Chinese students (Cheng, 1997; Chen, 2018). Previous studies also indicated that social support can be a preventive factor against negative psychological emotions among Chinese students (Cheng, 1997; Chen, 2018). The COSs are generally faced with high financial costs, high expectations from their families, heavy academic tasks, and not assimilated stereotypes of the Chinese group (Ruble and Zhang, 2013; Fang et al., 2020; Xi et al., 2020). In particular, the widespread prejudice against the China and Chinese citizens after the COVID-19 outbreak has put the COSs in a more complicated and hostile environment (Mittelmeier and Cockayne, 2020); thereby, social support is particularly imperative for them in this challenging situation.

The reason why only a weak moderating effect was found could be that mere provision from the interpersonal resources is not sufficient to prevent the negative mental consequences under the predicament. Social support could only be beneficial if it is tailored to the most appropriate coping methods for the stressful circumstances (Sarason et al., 1990; Schreurs and de Ridder, 1997; André-Petersson et al., 2006). Therefore, future studies should focus more on the application environment of social support to provide the students with valuable helping in threatening those difficulties.

Fear of the COVID-19 has a tremendous mental health impact all over the world; therefore, related mental illness prevention is critical during this difficult time (Pakpour and Griffiths, 2020). While e-learning mode is employed worldwide during the COVID-19 pandemic period, this finding can provide empirical evidence in implementing psychological interventions to prevent depression among international students. As a result of their minority status, the mental health of the international students is often neglected by both their homeland and their studying region and they are more prone to depressive disorders (Chen et al., 2020). To help the international students to minimize their depression, FoC should be avoided that can be utilized as a preventive therapy. They could also be incorporated into the mental health training program of the college to assist the international students in building psychological resilience (Saltzman et al., 2020), hence minimizing depression.

Since FoC is a reaction to the worldwide spread of the COVID-19 (Daniel, 2020), this study can provide empirical data to verify the detrimental mental impact on the FOC as well as suggest novel models involving resilience, social

TABLE 3 | Regression analysis of relationship between fear of COVID-19 and depression with mediation analyses ($N = 476$).

| | | Coeff. | Standardized Coeff. | Boot Se | p | Bootstrap 95%CI | | R^2 | F |
|----------------------|-----------------|--------|---------------------|---------|------------|-----------------|--------|-------|-----------|
| | | | | | | Lower | Upper | | |
| Resilience (Model 1) | | | | | | | | 0.153 | 21.215*** |
| | Constant | 1.567 | | 1.639 | 0.339 | -1.655 | 4.788 | | |
| | Gender | -3.189 | -0.129 | 1.053 | 0.003** | -5.257 | -1.121 | | |
| | Age | 1.171 | 0.059 | 1.178 | 0.321 | -1.143 | 3.485 | | |
| | Education Level | -0.829 | -0.042 | 1.191 | 0.486 | -3.169 | 1.510 | | |
| | FoC | -0.705 | -0.359 | 0.084 | < 0.001*** | -0.869 | -0.540 | | |
| Depression (Model 2) | | | | | | | | 0.345 | 61.972*** |
| | Constant | -0.664 | | 0.649 | 0.307 | -1.941 | 0.612 | | |
| | Gender | 0.148 | 0.013 | 0.417 | 0.723 | -0.672 | 0.967 | | |
| | Age | 0.140 | 0.016 | 0.467 | 0.764 | -0.777 | 1.057 | | |
| | Education Level | 0.226 | 0.025 | 0.472 | 0.633 | -0.701 | 1.153 | | |
| | FoC | 0.516 | 0.583 | 0.033 | < 0.001*** | 0.451 | 0.582 | | |
| Depression (Model 3) | | | | | | | | 0.453 | 77.792*** |
| | Constant | -0.412 | | 0.595 | 0.489 | -1.581 | 0.757 | | |
| | Gender | -0.365 | -0.033 | 0.385 | 0.344 | -1.123 | 0.392 | | |
| | Age | 0.328 | 0.037 | 0.427 | 0.443 | -0.511 | 1.168 | | |
| | Education Level | 0.092 | 0.010 | 0.432 | 0.831 | -0.756 | 0.941 | | |
| | FoC | 0.403 | 0.455 | 0.033 | < 0.001*** | 0.339 | 0.467 | | |
| | Resilience | -0.161 | -0.357 | 0.017 | < 0.001*** | -0.194 | -0.128 | | |

** $p < 0.01$, *** $p < 0.001$.

support, and depression with FoC as a predictor. The findings of this study could contribute to understanding the buffering variables and the mental resources that are important to mitigate unfavorable consequences of mental health during the COVID-19 pandemic period. By suggesting that resilience may assist in minimizing depression, this study provided a novel research path for preventing mental health problems. Promoting internal resilience would be an effective strategy for reducing depression when faced with hardship (Brewin et al., 1989; Malhi et al., 2019).

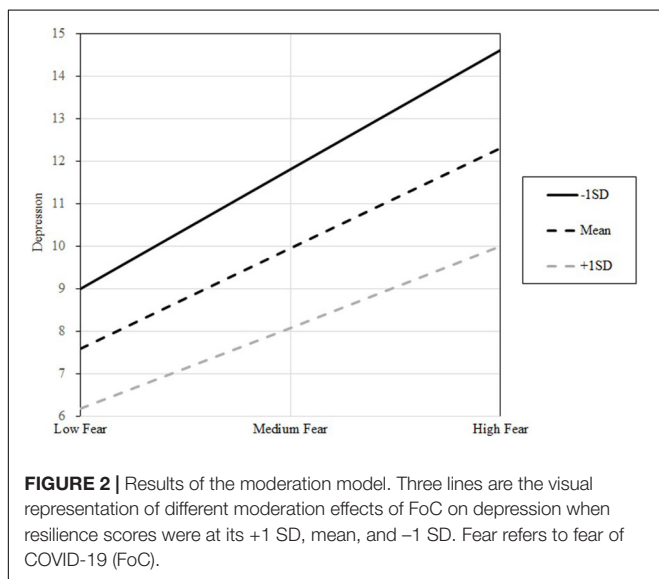
TABLE 4 | Resilience in the mediation effect analysis (N = 476).

| | Effect | Boot SE | Bootstrap 95%CI | | Effect% |
|-----------------|--------|---------|-----------------|-------|---------|
| | | | Lower | Upper | |
| Total effect | 0.516 | 0.033 | 0.451 | 0.582 | |
| Direct effect | 0.403 | 0.033 | 0.339 | 0.467 | 78.10% |
| Indirect effect | 0.113 | 0.017 | 0.082 | 0.148 | 21.89% |

TABLE 5 | Results from a regression analysis examining the moderation of the effect of FoC on depression by resilience (N = 476).

| Variables | Outcome: Depression | | | | |
|---------------------------------|---------------------|-------|------------|--------|--------|
| | Coeff. | SE | p | LLCI | ULCI |
| Constant | -0.579 | 0.596 | 0.332 | -1.750 | 0.592 |
| FoC | 0.394 | 0.033 | < 0.001*** | 0.329 | 0.458 |
| Resilience | -0.158 | 0.017 | < 0.001*** | -0.191 | -0.126 |
| FoC × Resilience | -0.006 | 0.003 | 0.016* | -0.012 | -0.001 |
| Gender | -0.391 | 0.383 | 0.308 | -1.145 | 0.362 |
| Age | 0.329 | 0.425 | 0.439 | -0.506 | 1.165 |
| Education Level | 0.104 | 0.429 | 0.809 | -0.740 | 0.949 |
| $R^2 = 0.4596$ | | | | | |
| $F(6, 469) = 66.482, P < 0.001$ | | | | | |

*p < 0.05 and ***p < 0.001.



Implications

First, this study extends existing FoC and depression literature among the international student group by showing that FoC has a significant positive effect on the depression of the COS. A positive association between FoC and depression was found, which is consistent with previous studies showing that FoC can be a trigger to depression in the domestic contexts (Bakioğlu et al., 2020; Al Majali and Alghazo, 2021). Second, the findings indicated that FoC is associated with depression through both the mediation and moderation models with resilience. The current findings confirmed that resilience has significant implications in preventing the negative mental states under the COVID-19 context. The underlying mechanism of association between FoC and depression was explored. These findings also provided a more comprehensive grasp of mental health services and higher education institutions working with the international students to help determine the protocols and interventions to prevent mental illness in the students.

Limitations and Future Directions

Some limitations that exist in this study need to be acknowledged. First, a previous study revealed that there are regional differences in FoC (Lo Coco et al., 2021). However, the different influences from the studying region of the COS were not applicable in this study. Second, the present sample of the COSs was predominantly composed of those studying in North America, the United Kingdom/European Union, or Hong Kong/Macau/Taiwan of China because of the commonly known study region preference of the COSs. Therefore, future studies should focus on the COSs from a specific region or obtain a more region-balanced sample to indicate the influence of FoC among the COSs studying in the different regions. Furthermore, this study did not collect the information on the current resident region in China of those COSs. Previous research has found that regional differences in various areas of China (e.g., comparing Wuhan with other cities in the low-risk infection areas) on the impact of the COVID-19 on mental health due to the epidemic history and risk of infection in these areas (Wen et al., 2020; Ge et al., 2021). Thus, a future study involving

TABLE 6 | Results from a regression analysis examining the moderation of the effect of FoC on depression by social support (N = 476).

| Variables | Outcome: Depression | | | | |
|----------------------------------|---------------------|-------|------------|--------|--------|
| | Coeff. | SE | p | LLCI | ULCI |
| Constant | -0.132 | 0.115 | 0.249 | -0.358 | 0.093 |
| FoC | 0.511 | 0.036 | < 0.001*** | 0.440 | 0.582 |
| Social Support | -0.301 | 0.036 | < 0.001*** | -0.372 | -0.229 |
| FoC × Social Support | -0.002 | 0.035 | 0.956 | -0.069 | 0.066 |
| Gender | -0.014 | 0.074 | 0.854 | -0.159 | 0.131 |
| Age | 0.069 | 0.083 | 0.407 | -0.094 | 0.231 |
| Education Level | 0.023 | 0.083 | 0.787 | -0.141 | 0.186 |
| $R^2 = 0.4294$ | | | | | |
| $F(6, 469) = 58.8261, P < 0.001$ | | | | | |

***p < 0.001.

a regional difference in China could be conducted. Moreover, the study cannot directly emphasize the mechanisms of social support in preventing depression. Previous studies measured social support from different perspectives (Eagle et al., 2019; Ye et al., 2019) and perceived social support from different sources (Procidano and Heller, 1983). This study only measured the perceived social support during the COVID-19 pandemic period without detailed information on the support resources. Therefore, an additional measurement of social support that would be applied in the current results is not confirmed. On the other hand, the current study is only a cross-sectional design, which makes our findings that are not deep-going and comprehensive enough. Therefore, a longitudinal design that addresses the temporal association among those variables or an experimental design to control more confounding variables could be adopted in future studies. Fourth, due to the social distancing considering during the COVID-19 pandemic period, this study utilized an online self-reporting questionnaire; thus, interference from the external environment and potential response bias to the items were unavoidable. Therefore, multiple rating sources or measurements should be utilized to minimize the presence of bias during the data collection. Fifth, we use the Hayes approach (2013) to test the mediating and moderating roles of resilience and social support, which contains some potential limitations. Although this approach exhibits considerable statistical power, it is also more likely to make the error of type I than the other mediating and moderating methods (Preacher et al., 2011; Fang and Wen, 2018). Therefore, future research needs to take into account the errors caused by the statistical methods.

Conclusion

This study demonstrated the mediating effect and the moderating effect of resilience on the relationship between FoC and depression among the COSs studying online in China during the COVID-19 pandemic period. However, the moderating effect of social support on the association between FoC and depression was not sustained in this study. The findings provided empirical

evidence to confirm not only a positive relationship between FoC and depression but also suggest that it is mediated as well as moderated by resilience. Thus, providing more research evidence to attention in resilience training from institutions in higher education because of their significant role in the mental health of the international students.

DATA AVAILABILITY STATEMENT

The datasets generated for this study are available on request to the corresponding author.

ETHICS STATEMENT

The studies involving human participants were reviewed and approved by the Research Ethics Sub-Committee of the College of Liberal Arts and Social Sciences in the City University of Hong Kong. The patients/participants provided their written informed consent to participate in this study.

AUTHOR CONTRIBUTIONS

YC designed the research and completed the manuscript writing. YC, YL, and ZL collected and analyzed the data. YZ and TZ reviewed and edited the manuscript. All authors contributed to the article and approved the submitted version.

ACKNOWLEDGMENTS

Special thanks to Nancy Xiaonan Yu, Ph.D. This study is based on YC's master program, supervised by Dr. Nancy Xiaonan Yu, in the Department of Social and Behavioural Sciences, City University of Hong Kong.

REFERENCES

- Aguar-Quintana, T., Nguyen, H., Araujo-Cabrera, Y., and Sanabria-Díaz, J. M. (2021). Do job insecurity, anxiety and depression caused by the COVID-19 pandemic influence hotel employees' self-rated task performance? The moderating role of employee resilience. *Int. J. Hosp. Manag.* 94:102868. doi: 10.1016/j.ijhm.2021.102868
- Ahorsu, D. K., Lin, C.-Y., Imani, V., Saffari, M., Griffiths, M. D., and Pakpour, A. H. (2020). The fear of COVID-19 scale: development and initial validation. *Int. J. Mental Health Addict.* doi: 10.1007/s11469-020-00270-8 [Epub ahead of Print].
- Al Majali, S. A., and Alghazo, E. M. (2021). Mental health of individuals who are deaf during COVID-19: depression, anxiety, aggression, and fear. *J. Commun. Psychol.* 49, 2134–2143. doi: 10.1002/jcop.22539
- Al-Marroof, R. S., Salloum, S. A., Hassanien, A. E., and Shaalan, K. (2020). Fear from COVID-19 and technology adoption: the impact of Google Meet during Coronavirus pandemic. *Interact. Learn. Environ.* 1–16. doi: 10.1080/10494820.2020.1830121 [Epub ahead of print].
- André-Petersson, L., Hedblad, B., Janzon, L., and Ostergren P. O. (2006). Social support and behavior in a stressful situation in relation to myocardial infarction and mortality: who is at risk? Results from prospective cohort study "Men born in 1914," Malmö, Sweden. *Int. J. Behav. Med.* 13, 340–347. doi: 10.1207/s15327558ijbm1304_9
- Aneshensel, C. S., and Stone, J. D. (1982). Stress and depression: a test of the buffering model of social support. *Arch. Gen. Psychiatry* 39, 1392–1396. doi: 10.1001/archpsyc.1982.04290120028005
- Anyan, F., and Hjermald, O. (2016). Adolescent stress and symptoms of anxiety and depression: resilience explains and differentiates the relationships. *J. Affective Disord.* 203, 213–220. doi: 10.1016/j.jad.2016.05.031
- Bakioğlu, F., Korkmaz, O., and Ercan, H. (2020). Fear of COVID-19 and positivity: mediating role of intolerance of uncertainty, depression, anxiety, and stress. *Int. J. Mental Health Addict.* doi: 10.1007/s11469-020-00331-y [Epub ahead of print].
- Beck, A. T., Steer, R. A., and Brown, G. (1996). *Manual for the BDI-II*. San Antonio, TX: Psychological Corporation.
- Belen, H. (2021). Fear of COVID-19 and mental health: the role of mindfulness in during times of crisis. *Int. J. Mental Health Addict.* doi: 10.1007/s11469-020-00470-2 [Epub ahead of print].
- Bendau, A., Petzold, M. B., Pyrkosch, L., Maricic, L. M., Betzler, F., Rogoll, J., et al. (2021). Associations between COVID-19 related media consumption and symptoms of anxiety, depression and COVID-19 related fear in the general population in Germany. *Eur. Arch. Psychiatry Clin. Neurosci.* 271, 283–291.

- Besser, A., and Priel, B. (2008). Attachment, depression, and fear of death in older adults: the roles of neediness and perceived availability of social support. *Pers. Individ. Differ.* 44, 1711–1725. doi: 10.1016/j.paid.2008.01.016
- Brewin, C. R., MacCarthy, B., and Furnham, A. (1989). Social support in the face of adversity: the role of cognitive appraisal. *J. Res. Pers.* 23, 354–372. doi: 10.1016/0092-6566(89)90007-X
- Cacioppo, J. T., Reis, H. T., and Zautra, A. J. (2011). Social resilience: the value of social fitness with an application to the military. *Am. Psychol.* 66, 43–51. doi: 10.1037/a0021419
- Catalano, D., Chan, F., Wilson, L., Chiu, C. Y., and Muller, V. R. (2011). The buffering effect of resilience on depression among individuals with spinal cord injury: a structural equation model. *Rehabil. Psychol.* 56, 200–211. doi: 10.1037/a0024571
- Chen, J. H., Li, Y., Wu, A. M., and Tong, K. K. (2020). The overlooked minority: mental health of International students worldwide under the COVID-19 pandemic and beyond. *Asian J. Psychiatry* 54:102333. doi: 10.1016/j.ajp.2020.102333
- Chen, W. (2018). *Academic Stress, Depression, and Social Support: A Comparison of Chinese Students in International Baccalaureate Programs and Key Schools*. Ph.D. thesis. Tampa: University of South Florida.
- Cheng, C. (1997). Role of perceived social support on depression in Chinese adolescents: a prospective study examining the buffering model. *J. Appl. Soc. Psychol.* 27, 800–820. doi: 10.1111/j.1559-1816.1997.tb00660.x
- Chi, X., Chen, S., Chen, Y., Chen, D., Yu, Q., Guo, T., et al. (2021). Psychometric evaluation of the fear of COVID-19 scale among Chinese population. *Int. J. Mental Health Addict.* doi: 10.1007/s11469-020-00441-7 [Epub ahead of print].
- Ching, Y., Renes, S. L., McMurrow, S., Simpson, J., and Strange, A. T. (2017). Challenges facing Chinese international students studying in the United States. *Educ. Res. Rev.* 12, 473–482. doi: 10.5897/ERR2016.3106
- Cohen, S., and Wills, T. A. (1985). Stress, social support, and the buffering hypothesis. *Psychol. Bull.* 98, 310–57. doi: 10.1037/0033-2909.98.2.310
- Connor, K. M., and Davidson, J. R. (2003). Development of a new resilience scale: the Connor-Davidson resilience scale (CD-RISC). *Depres. Anxiety* 18, 76–82. doi: 10.1002/da.10113
- Daniel, J. (2020). Education and the COVID-19 pandemic. *Prospects* 49, 91–96. doi: 10.1007/s11125-020-09464-3
- Eagle, D. E., Hybels, C. F., and Proeschold-Bell, R. J. (2019). Perceived social support, received social support, and depression among clergy. *J. Social Pers. Relat.* 36, 2055–2073. doi: 10.1177/0265407518776134
- Egunjobi, J. P. (2020). *The Perception of Covid-19 as a Fear Factor in the Preparation for the Pandemic Aftermath*. Nairobi: Researchgate.
- Fang, J., and Wen, Z. L. (2018). A Comparison of Three Methods for Testing Multilevel Mediation. *J. Psychol. Sci.* 41, 962–967. doi: 10.16719/j.cnki.1671-6981.20180430
- Fang, S., Huang, J., Wu, S., Jin, M., Kim, Y., and Henrichsen, C. (2020). Family assets, parental expectation, and child educational achievement in China: a validation of mediation analyses. *Child. Youth Serv. Rev.* 112:104875. doi: 10.1016/j.childyouth.2020.104875
- Feng, S., Zhang, Q., and Ho, S. M. (2021). Fear and anxiety about COVID-19 among local and overseas Chinese university students. *Health Social Care Commun.* doi: 10.1111/hsc.13347
- Fletcher, D., and Sarkar, M. (2013). Psychological resilience: a review and critique of definitions, concepts, and theory. *Eur. Psychol.* 18, 12–23. doi: 10.1027/1016-9040/a000124
- Gabarron, E., Oyeyemi, S. O., and Wynn, R. (2021). COVID-19-related misinformation on social media: a systematic review. *Bull. World Health Organ.* 99, 455–463A. doi: 10.2471/BLT.20.276782
- Ge, Y., Ma, M., and Zhang, L. (2021). Effects of regional and individual epidemic exposure on interpersonal conflicts: the moderating role of meaning-focused coping. *Psychol. Tech. Appl.* 9, 425–431. doi: 10.16842/j.cnki.issn2095-5588.2021.07.005
- Havnen, A., Anyan, F., Hjemdal, O., Solem, S., Gurigard Riksfjord, M., and Hagen, K. (2020). Resilience moderates negative outcome from stress during the COVID-19 pandemic: a moderated-mediation approach. *Int. J. Environ. Res. Public Health* 17:6461. doi: 10.3390/ijerph17186461
- Hayes, A. F. (2013). “Mediation, moderation, and conditional process analysis,” in *Introduction to Mediation, Moderation, and Conditional Process Analysis: A Regression-Based Approach*, ed. T. D. Little (New York, NY: Guilford Publications), 1–20.
- Hefner, J., and Eisenberg, D. (2009). Social support and mental health among college students. *Am. J. Orthopsychiatry* 79, 491–499. doi: 10.1037/a0016918
- Herrman, H., Stewart, D. E., Diaz-Granados, N., Berger, E. L., Jackson, B., and Yuen, T. (2011). What is resilience? *Can. J. Psychiatry* 56, 258–265. doi: 10.1177/070674371105600504
- Hjemdal, O., Vogel, P. A., Solem, S., Hagen, K., and Stiles, T. C. (2011). The relationship between resilience and levels of anxiety, depression, and obsessive-compulsive symptoms in adolescents. *Clin. Psychol. Psychother.* 18, 314–321. doi: 10.1002/cpp.719
- Hornstein, E. A., and Eisenberger, N. I. (2017). Unpacking the buffering effect of social support figures: social support attenuates fear acquisition. *PLoS One* 12:e0175891. doi: 10.1371/journal.pone.0175891
- Hou, J., Yu, Q., and Lan, X. (2020). COVID-19 infection risk and depressive symptoms among young adults during quarantine: the moderating role of Grit and social support. *Front. Psychol.* 11:577942. doi: 10.3389/fpsyg.2020.577942
- Kaparounaki, C. K., Patsali, M. E., Mousa, D.-P. V., Papadopoulou, E. V., Papadopoulou, K. K., and Fountoulakis, K. N. (2020). University students’ mental health amidst the COVID-19 quarantine in Greece. *Psychiatry Res.* 290:113111. doi: 10.1016/j.psychres.2020.113111
- Kendall, P. C., Hollon, S. D., Beck, A. T., Hammen, C. L., and Ingram, R. E. (1987). Issues and recommendations regarding use of the Beck Depression Inventory. *Cogn. Ther. Res.* 11, 289–299. doi: 10.1007/BF01186280
- Kimhi, S., Marciano, H., Eshel, Y., and Adini, B. (2020). Resilience and demographic characteristics predicting distress during the COVID-19 crisis. *Soc. Sci. Med.* 265:113389. doi: 10.1016/j.socscimed.2020.113389
- Kliem, S., Mößle, T., Rehbein, F., Hellmann, D. F., Zenger, M., and Brähler, E. (2015). A brief form of the Perceived Social Support Questionnaire (F-SozU) was developed, validated, and standardized. *J. Clin. Epidemiol.* 68, 551–562. doi: 10.1016/j.jclinepi.2014.11.003
- Li, F., Luo, S., Mu, W., Li, Y., Ye, L., Zheng, X., et al. (2021). Effects of sources of social support and resilience on the mental health of different age groups during the COVID-19 pandemic. *BMC Psychiatry* 21:16. doi: 10.1186/s12888-020-03012-1
- Lo Coco, G., Gentile, A., Bosnar, K., Milovanović, I., Bianco, A., Drid, P., et al. (2021). A Cross-Country Examination on the Fear of COVID-19 and the Sense of Loneliness during the First Wave of COVID-19 Outbreak. *Int. J. Environ. Res. Public Health* 18:2586. doi: 10.3390/ijerph18052586
- Lorente, L., Vera, M., and Peiró, T. (2021). Nurses stressors and psychological distress during the COVID-19 pandemic: the mediating role of coping and resilience. *J. Adv. Nursing* 77, 1335–1344. doi: 10.1111/jan.14695
- Luthar, S. S., Cicchetti, D., and Becker, B. (2000). The construct of resilience: a critical evaluation and guidelines for future work. *Child Dev.* 71, 543–562. doi: 10.1111/1467-8624.00164
- Ma, H., and Miller, C. (2020). Trapped in a double bind: Chinese overseas student anxiety during the COVID-19 pandemic. *Health Commun.* doi: 10.1080/10410236.2020.1775439 [Epub ahead of print].
- Malhi, G. S., Das, P., Bell, E., Mattingly, G., and Mannie, Z. (2019). Modelling resilience in adolescence and adversity: a novel framework to inform research and practice. *Transl. Psychiatry* 9, 1–16. doi: 10.1038/s41398-019-0651-y
- Marcus, M., Yasamy, M. T., van Ommeren, M., Chisholm, D., and Saxena, S. (2014). *Depression, A Global Public Health Concern*. Geneva: World Health Organization. Available online at: http://www.who.int/mental_health/management/depression/who_paper_depression_wfmh_2012.pdf (accessed July 13, 2014).
- McDougall, M. A., Walsh, M., Wattier, K., Knigge, R., Miller, L., Stevermer, M., et al. (2016). The effect of social networking sites on the relationship between perceived social support and depression. *Psychiatry Res.* 246, 223–229. doi: 10.1016/j.psychres.2016.09.018
- Meichenbaum, D. (2005). “Understanding resilience in children and adults: implications for prevention and interventions,” in *Paper Presented at the Melissa Institute 9th Annual Conference on Resilience* (Miami, FL: Victor E. Clarke Education Center, South Miami Hospital).

- Mittelman, J., and Cockayne, H. (2020). *Global Depictions of International Students in a Time of Crisis: A Thematic Analysis of Twitter Data During Covid-19*. Available online at: https://papers.ssrn.com/sol3/papers.cfm?abstract_id=3703604 [accessed Nov 3, 2020].
- Mok, K. H., Xiong, W., Ke, G., and Cheung, J. O. W. (2021). Impact of COVID-19 pandemic on international higher education and student mobility: student perspectives from mainland China and Hong Kong. *Int. J. Educ. Res.* 105:101718. doi: 10.1016/j.ijer.2020.101718
- Pak, H., Süsen, Y., Nazlıgöl, M. D., and Griffiths, M. (2021). The Mediating Effects of Fear of COVID-19 and Depression on the Association Between Intolerance of Uncertainty and Emotional Eating During the COVID-19 Pandemic in Turkey. *Int. J. Mental Health Addict.* doi: 10.1007/s11469-021-00489-z [Epub ahead of print].
- Pakpour, A. H., and Griffiths, M. D. (2020). The fear of COVID-19 and its role in preventive behaviors. *J. Concurr. Disord.* 2, 58–63.
- Peker, A., and Cengiz, S. (2021). Covid-19 fear, happiness and stress in adults: the mediating role of psychological resilience and coping with stress. *Int. J. Psychiatry Clin. Pract.* doi: 10.1080/13651501.2021.1937656 [Epub ahead of print].
- Pierce, M., Hope, H., Ford, T., Hatch, S., Hotopf, M., John, A., et al. (2020). Mental health before and during the COVID-19 pandemic: a longitudinal probability sample survey of the UK population. *Lancet Psychiatry* 7, 883–892. doi: 10.1016/S2215-0366(20)30308-4
- Preacher, K. J., Zhang, Z., and Zyphur, M. J. (2011). Alternative methods for assessing mediation in multilevel data: the advantages of multilevel SEM. *Struct. Equation Model.* 18, 161–182. doi: 10.1080/10705511.2011.557329
- Procidano, M. E., and Heller, K. (1983). Measures of perceived social support from friends and from family: three validation studies. *Am. J. Commun. Psychol.* 11, 1–24. doi: 10.1007/BF00898416
- Rajkumar, R. P. (2020). COVID-19 and mental health: a review of the existing literature. *Asian J. Psychiatry* 52:102066. doi: 10.1016/j.ajp.2020.102066
- Rodríguez-Hidalgo, A. J., Pantaleón, Y., Dios, I., and Falla, D. (2020). Fear of COVID-19, stress, and anxiety in university undergraduate students: a predictive model for depression. *Front. Psychol.* 11:3041. doi: 10.3389/fpsyg.2020.591797
- Ruble, R. A., and Zhang, Y. B. (2013). Stereotypes of Chinese international students held by Americans. *Int. J. Intercult. Relat.* 37, 202–211. doi: 10.1016/j.ijintrel.2012.12.004
- Rueger, S. Y., Malecki, C. K., Pyun, Y., Aycocock, C., and Coyle, S. (2016). A meta-analytic review of the association between perceived social support and depression in childhood and adolescence. *Psychol. Bull.* 142, 1017–1067. doi: 10.1037/bul0000058
- Sahu, P. (2020). Closure of universities due to coronavirus disease 2019 (COVID-19): impact on education and mental health of students and academic staff. *Cureus* 12:e7541. doi: 10.7759/cureus.7541
- Sakib, N., Akter, T., Zohra, F., Bhuiyan, A. I., Mamun, M. A., and Griffiths, M. D. (2021). Fear of COVID-19 and depression: a comparative study among the general population and healthcare professionals during COVID-19 pandemic crisis in Bangladesh. *Int. J. Mental Health Addict.* 1–17. doi: 10.1007/s11469-020-00477-9 [Epub ahead of print].
- Saltzman, L. Y., Hansel, T. C., and Bordnick, P. S. (2020). Loneliness, isolation, and social support factors in post-COVID-19 mental health. *Psychol. Trauma Theory Res. Pract. Policy* 12:S55. doi: 10.1037/tra0000703
- Sarason, I. G., Pierce, G. R., and Sarason, B. R. (1990). Social support and interactional processes: a triadic hypothesis. *J. Social Pers. Relat.* 7, 495–506. doi: 10.1177/0265407590074006
- Saricali, M., Satici, S. A., Satici, B., Gocet-Tekin, E., and Griffiths, M. D. (2020). Fear of COVID-19, mindfulness, humor, and hopelessness: a multiple mediation analysis. *Int. J. Mental Health Addict.* doi: 10.1007/s11469-020-00419-5 [Epub ahead of print].
- Schaubroeck, J. M., Rioli, L. T., Peng, A. C., and Spain, E. S. (2011). Resilience to traumatic exposure among soldiers deployed in combat. *J. Occupat. Health Psychol.* 16, 18–37. doi: 10.1037/a0021006
- Schierberl Scherr, A. E., Ayotte, B. J., and Kellogg, M. B. (2021). Moderating Roles of Resilience and Social Support on Psychiatric and Practice Outcomes in Nurses Working During the COVID-19 Pandemic. *SAGE Open Nurs.* 7:23779608211024213. doi: 10.1177/23779608211024213
- Schreurs, K. M., and de Ridder, D. T. (1997). Integration of coping and social support perspectives: implications for the study of adaptation to chronic diseases. *Clin. Psychol. Rev.* 17, 89–112. doi: 10.1016/S0272-7358(96)00505-5
- Seçer, İ., Ulaş, S., and Karaman-Özlü, Z. (2020). The effect of the fear of COVID-19 on healthcare professionals' psychological adjustment skills: mediating role of experiential avoidance and psychological resilience. *Front. Psychol.* 11:561536. doi: 10.3389/fpsyg.2020.561536
- Sommerlad, A., Marston, L., Huntley, J., Livingston, G., Lewis, G., Steptoe, A., et al. (2020). Social relationships and depression during the COVID-19 lockdown: longitudinal analysis of the COVID-19 social study. *medRxiv* [Preprint]. doi: 10.1101/2020.12.01.20241950
- Songprakun, W., and McCann, T. V. (2015). Using bibliotherapy to assist people to recover from depression in Thailand: relationship between resilience, depression and psychological distress. *Int. J. Nurs. Pract.* 21, 716–724. doi: 10.1111/ijn.12250
- Tang, F., Liang, J., Zhang, H., Kelifa, M. M., He, Q., and Wang, P. (2020). COVID-19 related depression and anxiety among quarantined respondents. *Psychol. Health* 6, 164–178. doi: 10.1080/08870446.2020.1782410
- Treppe, S., Dienlin, T., and Reinecke, L. (2015). Influence of social support received in online and offline contexts on satisfaction with social support and satisfaction with life: a longitudinal study. *Media Psychol.* 18, 74–105. doi: 10.1080/15213269.2013.838904
- Van Breda, A. D. (2001). *Resilience Theory: A Literature Review*. Pretoria: South African Military Health Service.
- Walke, H. T., Honein, M. A., and Redfield, R. R. (2020). Preventing and responding to COVID-19 on college campuses. *JAMA* 324, 1727–1728. doi: 10.1001/jama.2020.20027
- Wang, C., Pan, R., Wan, X., Tan, Y., Xu, L., Ho, C. S., et al. (2020). Immediate psychological responses and associated factors during the initial stage of the 2019 coronavirus disease (COVID-19) epidemic among the general population in China. *Int. J. Environ. Res. Public Health* 17:1729. doi: 10.3390/ijerph17051729
- Wang, Z., Yuan, C.-M., Huang, J., Li, Z.-Z., Chen, J., Zhang, H.-Y., et al. (2011). Reliability and validity of the Chinese version of Beck Depression Inventory-II among depression patients. *Chin. Mental Health J.* 25, 476–480.
- Wen, F., Ma, S., Ye, H., Qi, Y., and Zuo, B. (2020). “Psychological Typhoon Eye Effect” and “Ripple Effect”: double perspective test of risk perception and anxiety characteristics of people in different COVID-19 severity regions. *Acta Psychol. Sin.* 52, 1087–1104. doi: 10.3724/SP.J.1041.2020.01087
- Wingo, A. P., Wrenn, G., Pelletier, T., Gutman, A. R., Bradley, B., and Ressler, K. J. (2010). Moderating effects of resilience on depression in individuals with a history of childhood abuse or trauma exposure. *J. Affect. Disord.* 126, 411–414. doi: 10.1016/j.jad.2010.04.009
- Witte, K., and Allen, M. (2000). A meta-analysis of fear appeals: implications for effective public health campaigns. *Health Educ. Behav.* 27, 591–615. doi: 10.1177/109019810002700506
- Xi, Y., Yu, H., Yao, Y., Peng, K., Wang, Y., and Chen, R. (2020). Post-traumatic stress disorder and the role of resilience, social support, anxiety and depression after the Jiuzhaigou earthquake: a structural equation model. *Asian J. Psychiatry* 49:101958. doi: 10.1016/j.ajp.2020.101958
- Yang, C., Chen, A., and Chen, Y. (2021). College students' stress and health in the COVID-19 pandemic: the role of academic workload, separation from school, and fears of contagion. *PLoS One* 16:e0246676. doi: 10.1371/journal.pone.0246676
- Ye, J., Yeung, D. Y., Liu, E. S., and Rochelle, T. L. (2019). Sequential mediating effects of provided and received social support on trait emotional intelligence and subjective happiness: a longitudinal examination in Hong Kong Chinese university students. *Int. J. Psychol.* 54, 478–486. doi: 10.1002/ijop.12484
- Yıldırım, M., Arslan, G., and Alkahtani, A. M. (2021). Do fear of COVID-19 and religious coping predict depression, anxiety, and stress among the Arab population during health crisis?

- Death Stud.* doi: 10.1080/07481187.2021.1882617 [Epub ahead of print].
- Yildirim, M., Arslan, G., and Özaslan, A. (2020). Perceived risk and mental health problems among healthcare professionals during COVID-19 pandemic: exploring the mediating effects of resilience and coronavirus fear. *Int. J. Mental Health Addict.* doi: 10.1007/s11469-020-00424-8 [Epub ahead of print].
- Yu, X., and Zhang, J. (2007). Factor analysis and psychometric evaluation of the Connor-Davidson Resilience Scale (CD-RISC) with Chinese people. *Soc. Behav. Pers.* 35, 19–30. doi: 10.2224/sbp.2007.35.1.19
- Zhai, Y., and Du, X. (2020). Mental health care for international Chinese students affected by the COVID-19 outbreak. *Lancet Psychiatry* 7:e22. doi:10.2224/sbp.2007.35.1.19
- Zhang, J., Wu, W., Zhao, X., and Zhang, W. (2020). Recommended psychological crisis intervention response to the 2019 novel coronavirus pneumonia outbreak in China: a model of West China Hospital. *Precis. Clin. Med.* 3, 3–8. doi: 10.1093/pcmedi/pbaa006
- Zhou, X., Zhu, H., Zhang, B., and Cai, T. (2013). Perceived social support as moderator of perfectionism, depression, and anxiety in college students. *Soc. Behav. Pers.* 41, 1141–1152. doi: 10.2224/sbp.2013.41.7.1141
- Conflict of Interest:** The authors declare that the research was conducted in the absence of any commercial or financial relationships that could be construed as a potential conflict of interest.
- Publisher's Note:** All claims expressed in this article are solely those of the authors and do not necessarily represent those of their affiliated organizations, or those of the publisher, the editors and the reviewers. Any product that may be evaluated in this article, or claim that may be made by its manufacturer, is not guaranteed or endorsed by the publisher.
- Copyright © 2021 Chen, Liu, Zhang, Li and Zhou. This is an open-access article distributed under the terms of the Creative Commons Attribution License (CC BY). The use, distribution or reproduction in other forums is permitted, provided the original author(s) and the copyright owner(s) are credited and that the original publication in this journal is cited, in accordance with accepted academic practice. No use, distribution or reproduction is permitted which does not comply with these terms.