



香港城市大學
City University of Hong Kong

專業 創新 胸懷全球
Professional · Creative
For The World

CityU Scholars

Large-area and bright pulsed electroluminescence in monolayer semiconductors

Lien, Der-Hsien; Amani, Matin; Desai, Sujay B.; Ahn, Geun Ho; Han, Kevin; He, Jr-Hau; Ager, Joel W.; Wu, Ming C.; Javey, Ali

Published in:
Nature Communications

Published: 01/01/2018

Document Version:
Final Published version, also known as Publisher's PDF, Publisher's Final version or Version of Record

License:
CC BY

Publication record in CityU Scholars:
[Go to record](#)

Published version (DOI):
[10.1038/s41467-018-03218-8](https://doi.org/10.1038/s41467-018-03218-8)

Publication details:
Lien, D.-H., Amani, M., Desai, S. B., Ahn, G. H., Han, K., He, J.-H., Ager, J. W., Wu, M. C., & Javey, A. (2018). Large-area and bright pulsed electroluminescence in monolayer semiconductors. *Nature Communications*, 9, Article 1229. <https://doi.org/10.1038/s41467-018-03218-8>

Citing this paper

Please note that where the full-text provided on CityU Scholars is the Post-print version (also known as Accepted Author Manuscript, Peer-reviewed or Author Final version), it may differ from the Final Published version. When citing, ensure that you check and use the publisher's definitive version for pagination and other details.

General rights

Copyright for the publications made accessible via the CityU Scholars portal is retained by the author(s) and/or other copyright owners and it is a condition of accessing these publications that users recognise and abide by the legal requirements associated with these rights. Users may not further distribute the material or use it for any profit-making activity or commercial gain.

Publisher permission

Permission for previously published items are in accordance with publisher's copyright policies sourced from the SHERPA RoMEO database. Links to full text versions (either Published or Post-print) are only available if corresponding publishers allow open access.

Take down policy

Contact lbscholars@cityu.edu.hk if you believe that this document breaches copyright and provide us with details. We will remove access to the work immediately and investigate your claim.

ARTICLE

DOI: 10.1038/s41467-018-03218-8

OPEN

Large-area and bright pulsed electroluminescence in monolayer semiconductors

Der-Hsien Lien ^{1,2}, Matin Amani ^{1,2}, Sujay B. Desai ^{1,2}, Geun Ho Ahn ^{1,2}, Kevin Han ¹, Jr-Hau He ³, Joel W. Ager III ², Ming C. Wu ¹ & Ali Javey ^{1,2}

Transition-metal dichalcogenide monolayers have naturally terminated surfaces and can exhibit a near-unity photoluminescence quantum yield in the presence of suitable defect passivation. To date, steady-state monolayer light-emitting devices suffer from Schottky contacts or require complex heterostructures. We demonstrate a transient-mode electroluminescent device based on transition-metal dichalcogenide monolayers (MoS₂, WS₂, MoSe₂, and WSe₂) to overcome these problems. Electroluminescence from this dopant-free two-terminal device is obtained by applying an AC voltage between the gate and the semiconductor. Notably, the electroluminescence intensity is weakly dependent on the Schottky barrier height or polarity of the contact. We fabricate a monolayer seven-segment display and achieve the first transparent and bright millimeter-scale light-emitting monolayer semiconductor device.

¹Electrical Engineering and Computer Sciences, University of California, Berkeley, CA 94720, USA. ²Materials Sciences Division, Lawrence Berkeley National Laboratory, Berkeley, CA 94720, USA. ³Computer, Electrical and Mathematical Sciences and Engineering Division, King Abdullah University of Science & Technology, Thuwal 23955-6900, Saudi Arabia. Der-Hsien Lien, Matin Amani and Sujay B. Desai contributed equally to this work. Correspondence and requests for materials should be addressed to A.J. (email: ajavey@berkeley.edu)

Transition-metal dichalcogenides (TMDCs) such as WSe_2 and MoS_2 are semiconducting analogs of graphene, and are candidate materials for next-generation optoelectronic and electronic devices^{1–5}. Their unique properties include naturally terminated surfaces at the monolayer limit (~ 0.7 nm), which when coupled with appropriate passivation of defect sites can result in near-unity photoluminescence (PL) quantum yield (QY)^{3,6}. In addition, monolayer TMDCs display a myriad of attractive and unique physical properties including the lack of inversion symmetry, chiral light emission, and the ability to form heterostructures without the need for lattice matching^{7–9}. Recent advances in the synthesis of high-quality TMDCs via chemical vapor deposition (CVD) demonstrate their potential for scalability^{10,11}. The high PL QY and subnanometer thickness of TMDCs can be leveraged to develop large-area, transparent, and efficient light-emitting devices^{3,6}. However, despite their exceptional material properties, a key challenge for TMDC light-emitting devices to date has been the formation of ohmic contacts to electrons and holes in the same device. Ohmic contacts in traditional light-emitting diodes (LEDs) are essential to minimize resistive losses and achieve high injection levels¹². In previous works, steady-state electroluminescence (EL) was obtained in TMDCs using p - n junctions formed via electrostatic or chemical doping^{13–15}. More recently, EL from complex quantum well heterostructures utilizing graphene with hexagonal boron-nitride tunnel barriers has been demonstrated^{16,17}. However, the lack of suitable bipolar ohmic contacts remains to be a significant issue, ultimately limiting the performance of TMDC light-emitting devices¹.

Inspired by the first EL device, the light-emitting-capacitor^{18–21}, we achieve efficient bipolar carrier injection and light emission in TMDCs via transient-mode operation using a single metal-semiconductor contact (source). In this two-terminal device, the source is grounded and an AC voltage is applied to the gate

electrode. Alternating electron and hole populations are injected into the monolayer TMDC from the source contact. Notably, the carrier injection is weakly dependent on the Schottky barrier height (ϕ_B) (i.e., polarity of the contact) because of the large tunneling currents present at the source during the gate-voltage (V_g) transients. The transient-EL (t-EL) device achieves bright EL at high injection levels. We demonstrate a millimeter-scale device with bright EL (peak power of $193 \mu\text{W cm}^{-2}$) from a ~ 0.7 nm thick monolayer in ambient room lighting. Finally, we show a large area device fabricated on a quartz substrate, which is transparent in the off-state by using indium tin oxide (ITO) electrodes.

Results

Operation and structure of the t-EL device. Figure 1a shows a schematic of the t-EL device, consisting of a monolayer TMDC on a heavily doped silicon substrate (gate) with a 50 nm thick SiO_2 layer as the gate oxide. The TMDC is contacted with one metal electrode (source), and a bipolar square wave is applied between the gate and source. As shown in Fig. 1b, EL is only observed near the source contacts and the emission region laterally extends from the contact edge by $\sim 3 \mu\text{m}$ (Supplementary Fig. 1). We fabricated devices based on four of the most heavily studied monolayer TMDCs by employing this generic device structure, specifically: WS_2 , MoS_2 , WSe_2 , and MoSe_2 ^{22,23}. All four of the studied materials show EL, with the spectral emission shape closely matching their respective PL (Fig. 1c).

Carrier injection and light-emission mechanism. We performed time-resolved EL (TREL) measurements to understand the dynamic performance and the mechanism of light emission in the t-EL device. The measured TREL from a WSe_2 device and the corresponding V_g square wave are shown in Fig. 2a and

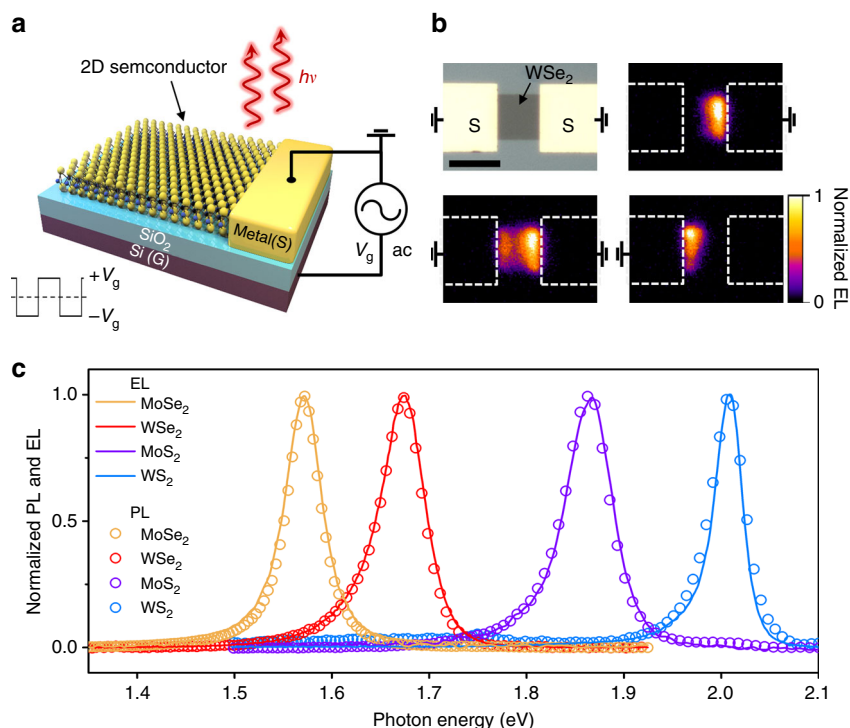


Fig. 1 Transient EL in TMDCs. **a** Schematic of the t-EL device. An AC voltage is applied between the gate and source electrodes and emission occurs near the source contact edge. **b** Optical and EL image of a WSe_2 device, showing that emission is only observed near the grounded source contacts. Scale bar is 10 μm . **c** EL and PL spectra measured for MoSe_2 , WSe_2 , MoS_2 , and WS_2 monolayer devices

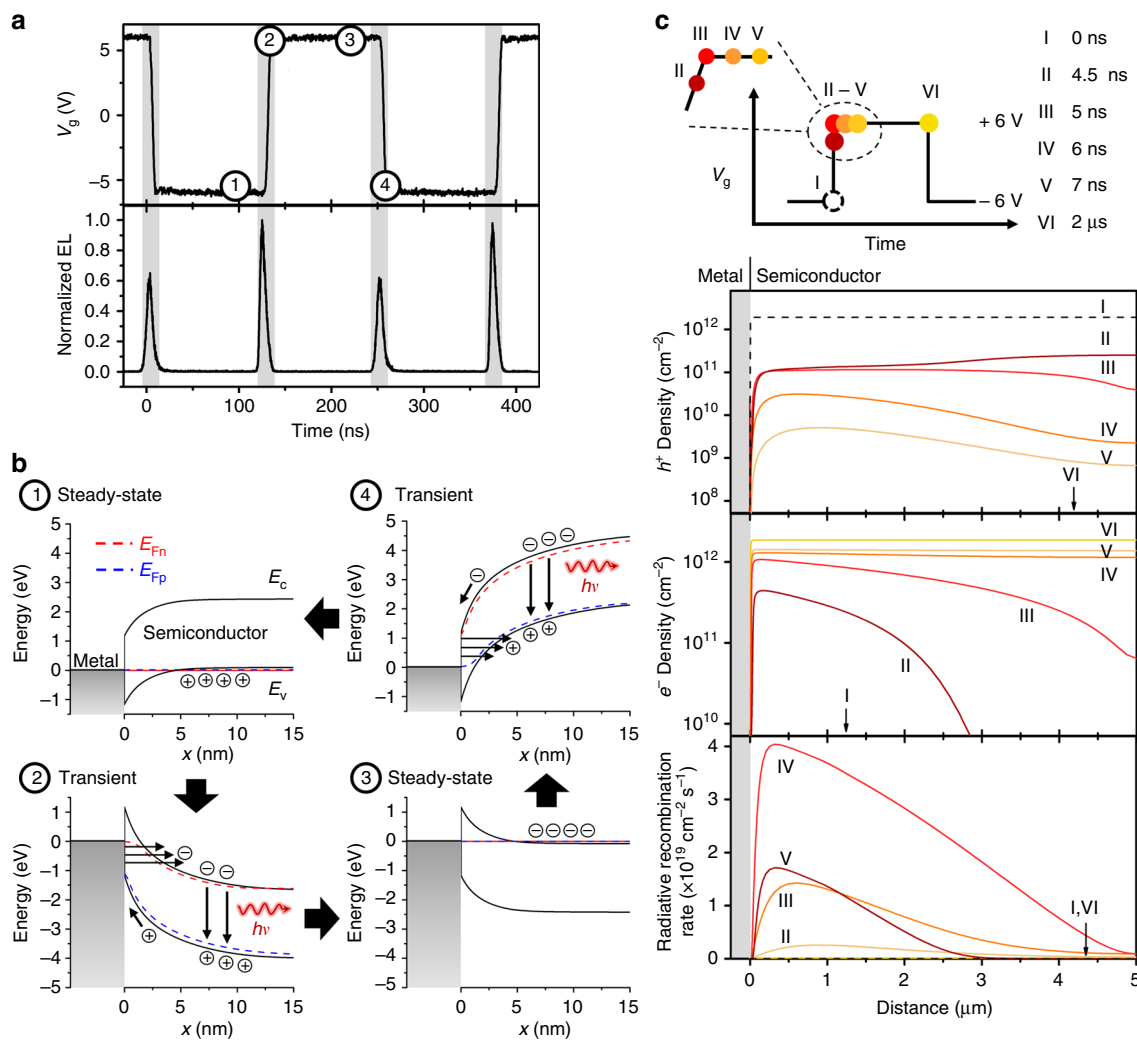


Fig. 2 Operation mechanism. **a** Time-resolved electroluminescence and the corresponding V_g , showing that EL occurs at the V_g transients (time points 2 and 4). **b** Band diagrams at different times during the operation cycle, corresponding to **a**. E_{Fn} and E_{Fp} indicate the quasi-Fermi levels for electrons and holes, respectively. **c** V_g pulse applied to the simulated device and the corresponding electron/hole density and radiative recombination rate. Simulations were performed for material parameters corresponding to WSe₂ using a 50 nm thick gate oxide and $V_g = \pm 6$ V (simulated band diagrams are also shown in Supplementary Figs. 5 and 6)

Supplementary Fig. 2 (the operation mechanism is also depicted in Supplementary Video 1). Pulsed EL is observed at each V_g transition and has a full-width half-maximum of 8 ns. EL emission in the device increases linearly with frequency (f) as shown in Supplementary Fig. 3 and Supplementary Note 2, with no changes in spectral shape. Note that the EL is stable with an approximately $\pm 25\%$ intensity variation over time (Supplementary Fig. 4). The emission mechanism can be elucidated from the sequence of energy band diagrams (simulated via Sentaurus TCAD) shown in Fig. 2b, Supplementary Figs. 5 and 6 as well as the carrier densities and radiative recombination rate shown in Fig. 2c. When V_g is held at -6 V, the hole density in the semiconductor is large and approaches its steady-state value ($p_0 \sim 1.9 \times 10^{12} \text{ cm}^{-2}$). When V_g is switched to $+6$ V, the field across the capacitive component of the device (i.e., SiO₂ gate dielectric) cannot change instantaneously. As a result, the applied voltage is dropped across the resistive parts of the device including the semiconductor and the source contact, but is dominated by the latter. The large voltage drop and the steep energy band bending at the Schottky contact lead to large transient tunneling currents. Injected electrons diffuse inward while holes exit the semiconductor through the contact or recombine with incoming

electrons. Thus, the hole density shows a continuous decrease, whereas the electron density in the semiconductor increases until it reaches its steady-state value ($n_0 \sim 1.9 \times 10^{12} \text{ cm}^{-2}$). At steady state, the band bending in the semiconductor and at the contact decreases (Supplementary Figs. 5 and 6) and the tunneling currents subside. The excess electron and hole populations simultaneously present (large quasi-Fermi level splitting) during the AC transient result in pulsed light emission. Similarly, this mechanism can also explain the emission from the device during a -6 V to $+6$ V V_g transient. The large transient tunneling currents in the t-EL device allow for efficient modulation of the carrier densities in the semiconductor, surmounting the large Schottky barriers typically associated with non-ohmic contacts to TMDCs. Simulated transient currents are shown in Supplementary Fig. 7 and the various current components present are discussed in detail in the Supplementary Note 3.

Schottky barrier height and gate-voltage dependence. The impact of ϕ_B on transient carrier injection and light emission is further studied by fabricating WSe₂ devices with electrodes prepared by sputtering (ITO), thermal evaporation (Au, Ag, Ni,

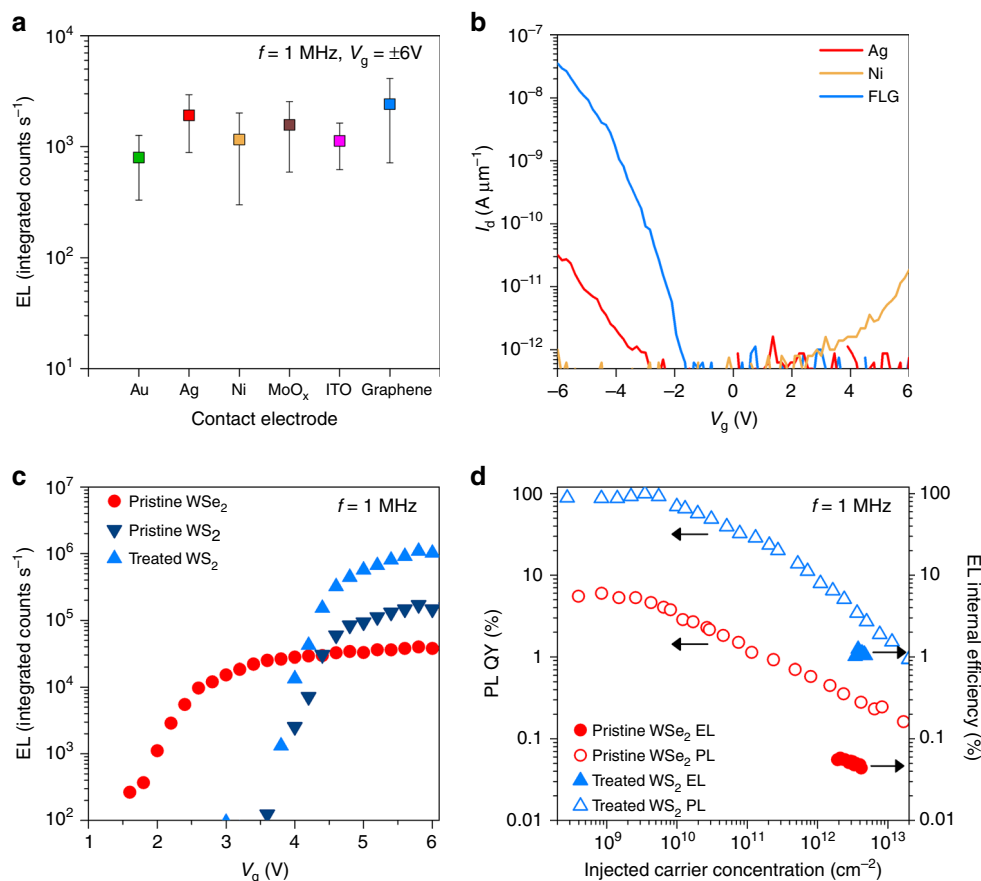


Fig. 3 Contact and voltage dependence. **a** EL from WSe₂ devices fabricated using various source contacts. Error bars indicate standard deviation of EL intensity measured from five or more different devices. **b** I_d - V_g characteristics of WSe₂ devices contacted by Ag, Ni, and few-layer graphene source electrodes. **c** Voltage dependence of EL for WSe₂ and WS₂ devices (WS₂ before and after superacid treatment). **d** PL QY and EL internal efficiency measured for a WSe₂ device and a superacid-treated WS₂ device as a function of injected carrier concentration

MoO_x), as well as transferred van der Waals few-layer graphene contacts. The different contacts result in ~ 3 orders of magnitude variation in the on-current when the device is configured as a transistor (Supplementary Fig. 8). However, the corresponding t-EL devices show a maximum variation in the integrated emission intensity of only $\sim 4\times$ as shown in Fig. 3a (error bars indicate standard deviation of EL intensity measured from five or more different devices). WSe₂ transistor characteristics for Ag, Ni, and graphene contacts are shown in Fig. 3b. Sentaurus TCAD simulations similarly show negligible difference in integrated EL for varying φ_B over the range of ohmic ($\varphi_B = 0.05$ eV) to mid-gap ($\varphi_B = E_g/2$) (Supplementary Fig. 9). The relative intensity of emission during the two V_g transients, however, does vary for devices with varying φ_B . As shown in the TREL of a hole selective contact device (Supplementary Fig. 10), the EL intensity at $+V_g$ to $-V_g$ transient is stronger than the other transient. This is consistent with simulation results (Supplementary Fig. 11) and discussed in the Supplementary Note 4. In addition to the effect of φ_B , we also studied the dependence of EL on varying V_g (Fig. 3c and Supplementary Fig. 12). EL is observed from the device when V_g is greater than the turn-on voltage (V_t), whose precise value is dependent on the bandgap (E_g) of the material and parasitic resistances in the device. We experimentally observe a higher V_t for WS₂ (4.1 V) as compared to WSe₂ (2.0 V) which is qualitatively consistent with the larger E_g of WS₂²⁴.

The efficiency in traditional light-emitting devices is defined as the number of emitted photons over the total current. However, for the t-EL device, transient current measurement is challenging

due to device and measurement setup parasitic capacitances as well as the high slew rate (1.6 V ns⁻¹) of the V_g square wave. Given this limitation, we define EL internal efficiency (η_i) based on the total steady-state carrier concentration, which represents the maximum number of carriers that can undergo radiative recombination in a given V_g cycle. The efficiency is thus defined as: $\eta_i = \frac{\text{photons/cycle}}{(n_0 + p_0) \times \text{area}}$ (Supplementary Equation 6). The sum of the steady-state concentrations, $(n_0 + p_0)$ is given by $C_g(2V_g - E_g q^{-1})q^{-1}$ (Supplementary Equation 7). Here, n_0 and p_0 are the steady-state electron and hole concentrations corresponding to a positive and negative V_g , respectively, C_g (69.1 nF cm⁻² for 50 nm SiO₂ gate oxide) is the areal gate capacitance and q is the elementary charge. The analytical value of $n_0 + p_0$ closely matches that from simulations at sufficiently high V_g (Fig. 2c and Supplementary Fig. 13). η_i approaches 100% for the case where the PL QY is unity and all the steady-state carriers present in the device undergo recombination during a V_g transient. In practice, the PL QY may not be 100%, and only a fraction of the steady-state carriers will undergo recombination in the semiconductor, while the remainder exit through the contact due to the finite slew rate of the AC source. Further details on the efficiency calculation are provided in the Supplementary Note 6.

The WSe₂ t-EL device at $n_0 + p_0 = 2.1 \times 10^{12}$ cm⁻² (calculated from Supplementary Equation 7 for $V_g = 3.2$ V and $E_g = 2.34$ eV) has an EL external efficiency (η_e) of 0.01% (Supplementary Fig. 14)²⁴. The η_i of this device is extracted from η_e by considering the escape cone and optical interference from the Si substrate with a 50 nm SiO₂ layer^{3,25}. Using this method, we calculate η_i of

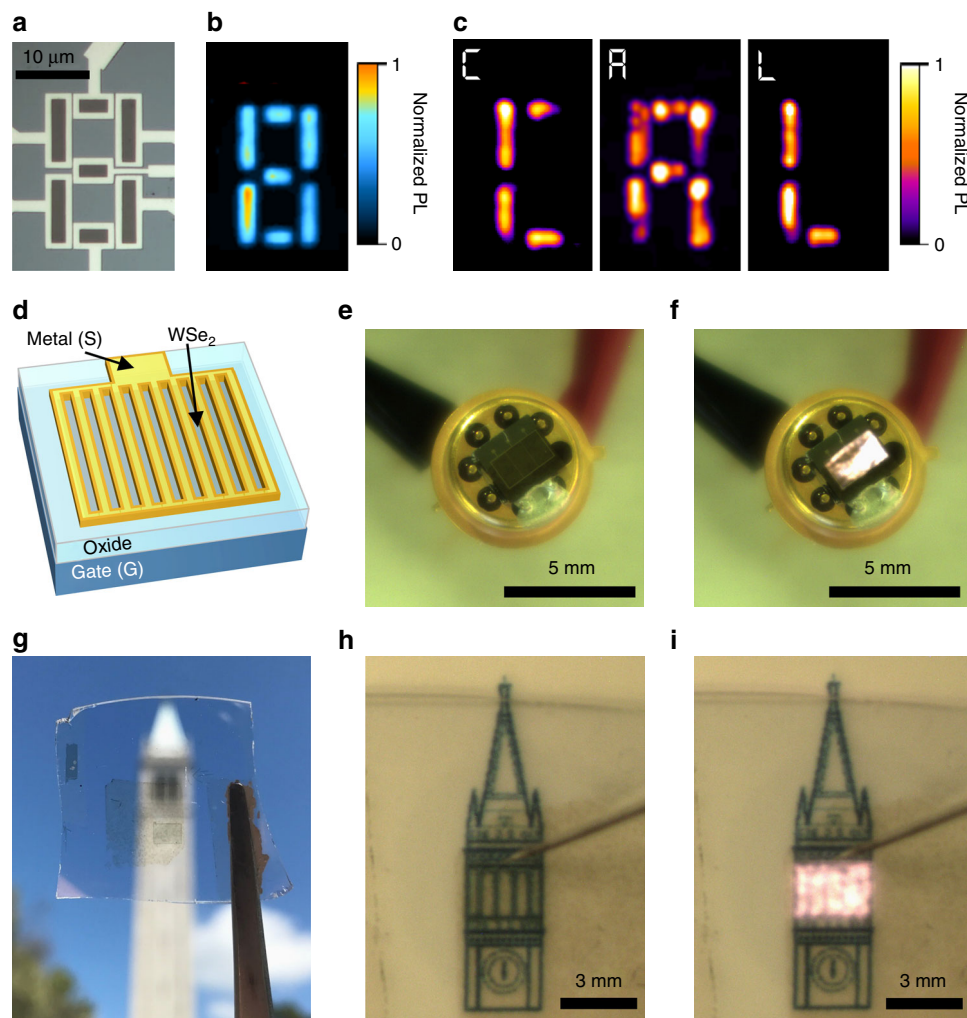


Fig. 4 Seven-segment display and millimeter-scale t-EL device. **a** Optical microscope image and **b** photoluminescence image of a seven-segment t-EL display. **c** Operation of the seven-segment display showing EL in the shape of C-A-L. **d** Schematic of a millimeter-scale device, showing the grid source electrode structure to increase active emission area. **e, f** Photograph of a packaged, 3 mm × 2 mm, device in the off **e** and on **f** state. **g** Photograph of a millimeter-scale transparent device. **h, i** Photograph of a large area (3 mm × 2 mm) transparent device in the off **h** and on **i** state

~0.06%. To contrast the performance of the t-EL device relative to the PL QY of the material, the steady-state and quasi-steady-state PL are measured using a continuous-wave and pulsed laser respectively (Fig. 3d, Supplementary Note 1, and Supplementary Fig. 15). The droop observed in PL QY at high injection levels has been previously attributed to biexcitonic recombination in two-dimensional (2D) semiconductors^{3,6}. The calculated η_i for WSe₂~0.06% has an upper bound equal to the PL QY of the material (~0.3%) (Fig. 3d). The efficiency of the device can be improved by utilizing a material with a high PL QY. We fabricated WS₂ devices where the semiconductor surface is passivated using a non-oxidizing organic superacid: bis(trifluoromethane)sulfonimide, which has been shown to enhance the PL QY at low injection levels ($<10^9$ cm⁻²) to >95%^{3,6}. In this superacid-treated device, we obtain a peak η_e of ~0.27% at $n_0 + p_0 \sim 3.8 \times 10^{12}$ cm⁻² (calculated from Supplementary Equation 7 for $V_g = 5.8$ V and $E_g = 2.88$ eV), corresponding to $\eta_i \sim 1.2\%$ (the EL for this device before and after treatment are shown in Supplementary Fig. 16)²⁴. We note that the η_i is still significantly limited by the PL QY droop at high injection levels (3.4%) (Fig. 3c and Supplementary Fig. 17). The effect of biexcitonic recombination on the PL QY is shown in Supplementary Fig. 18. This indicates that for pump levels in the range of 10^{12} cm⁻², WS₂ that has a C_{bx} of ~ 0.1 cm² s⁻¹, η_e can be improved to ~40% by

sufficiently lowering C_{bx} . The next phase for improving the efficiency involves engineering the radiative lifetime and biexcitonic recombination rate by properly selecting the substrate and/or top coating. Similar efforts are made in III-V thin film devices, where the radiative recombination rate is highly dependent on the optical mode density and refractive index of the medium²⁶.

Seven-segment display and millimeter-scale t-EL device. To demonstrate the versatility of this transient injection mechanism, we fabricated the first display using TMDCs as the light-emitting material. A seven-segment display was fabricated using monolayer WSe₂ with Ni contacts. An optical image and the corresponding PL image of the display are shown in Fig. 4a, b, respectively. By grounding the source electrodes of individual elements in the display sequentially, we show that we can dynamically display the letters C-A-L. Furthermore, we show that the t-EL device can be readily scaled to millimeter dimensions by using large-area monolayer films of WSe₂ grown by CVD¹¹. In order to maximize the light-emitting area, a Ni electrode is patterned in a grid structure with a line spacing of 8 μm (corresponding to ~2× of the emission FWHM, Supplementary Fig. 1). As a result, the EL from each contact edge fills the active area as

shown schematically in Fig. 4d. The final device was then packaged in a standard chip carrier. Figure 4e, f show photographs of a 3 mm × 2 mm device in operation under room lights. The average and peak output power of the device operating at $f = 400$ kHz, was measured directly using a power meter to be $0.62 \mu\text{W cm}^{-2}$ and $193 \mu\text{W cm}^{-2}$, respectively. This shows that a monolayer semiconductor has the potential to be used in display and lighting applications. EL photographs of another device as well as the EL spectrum of the mm-scale device are shown in Supplementary Fig. 19. Finally, we demonstrate that the device can be made transparent as shown in Fig. 4g, with the corresponding transmission spectrum of the device shown in Supplementary Fig. 20. This device is fabricated on a fused quartz substrate, utilizing ITO as the gate and source electrodes and Al_2O_3 as the gate dielectric. Photographs of a transparent device in the off- and on-state are shown in Fig. 4h, i, respectively. Videos showing operation of both the transparent and opaque millimeter-scale devices are available in the Supplementary Information (Supplementary Videos 2 and 3, respectively).

In summary, we have demonstrated bright EL at high injection levels using transient-mode operation via a simple dopant-free device that does not require complex heterostructures to achieve light emission. EL from this device is weakly dependent on the Schottky barrier height or polarity. The transient-EL concept demonstrated in this work can be extended to large bandgap materials in the future, for which achieving ohmic contacts to both carrier types is particularly challenging. We show that this device structure can be scaled-up to obtain light emission on millimeter length scales. The ability to realize large-scale light emission from monolayer semiconductors opens numerous potential opportunities in the field of 2D materials and can lead to the realization of transparent displays. Our results also suggest that the main factors limiting the performance of the t-EL device is PL QY droop due to biexcitonic recombination. The device performance can be further improved through engineering of the optical medium^{3,25}. Finally, unlike traditional LEDs, the exposed light-emitting surface of these devices also permits for the direct integration of plasmonic structures, nano-antennas, and photonic crystals, which could allow for the fabrication of high-speed devices or the development of electrically pumped 2D lasers^{27–29}.

Methods

Device fabrication. Devices based on MoS_2 (SPI supplies), WS_2 (HQ graphene), and MoSe_2 (HQ graphene) were fabricated from monolayers mechanically exfoliated onto 50 nm $\text{SiO}_2/\text{Si p}^{++}$ substrates. The WSe_2 monolayers used in this work were synthesized by CVD with conditions tuned to optimize the PL QY of the material. Growth methods are presented in the reference¹¹, with the following modifications to obtain large area films: the Se boat temperature was ramped up to 130 °C and the growth time was extended to 42 min. The typical PL QY of synthesized WSe_2 samples at low pump powers is in the range of 5–15%. CVD WSe_2 monolayers were subsequently transferred to the desired substrate. For large area devices, WSe_2 films were transferred using a technique reported in reference³⁰ either to Si/SiO_2 or fused quartz/ITO/ Al_2O_3 substrates. For patterning micron-scale devices on Si/SiO_2 , the 2D material was first etched using XeF_2 , while micron-scale devices on fused quartz/ITO/ Al_2O_3 were etched using O_2/CF_4 plasma. Metal electrodes were subsequently deposited by thermal evaporation or sputtering. For graphene contacted devices, graphene flakes (three to five layers thick) were etched and subsequently placed on the TMDC using a previously reported dry transfer technique⁹. Due to the low PL QY of as-exfoliated MoS_2 , devices were prepared using 40 nm thick Au contacts and subsequently were chemically treated using an organic superacid³ to enhance the PL QY prior to EL measurements. All patterning was performed using electron-beam lithography with either poly (methyl methacrylate) (PMMA) or methyl methacrylate/PMMA as the resist. In the case of devices fabricated on quartz substrates, a 10 nm Au film was thermally evaporated on the PMMA and etched post e-beam lithography using KI/I_2 etchant. For the case of superacid-treated WS_2 devices shown in this work, few-layer graphene contacts were used. This was done in order to eliminate process-induced degradation of the 2D layer, which predominantly occurs during e-beam lithography.

Electrical and optical characterization. Electroluminescent devices were pumped using a bipolar square wave from an Agilent 33522A arbitrary waveform generator

applied to the gate electrode, while the source contact was grounded. The PL and EL data presented in this work was measured using a custom built micro-PL instrument described in detail in reference³ (Supplementary Methods). To measure PL, either a 514.5 nm Ar^+ laser or a monochromated 514 nm line from a pulsed supercontinuum laser was used as the excitation source. PL and EL were collected using either a 50× ultra-long working distance or a ×10 objective lens. The PL signal was passed through a 550 nm dielectric longpass filter to block the excitation light. Both PL and EL were dispersed by a spectrometer with a 340 mm focal length and 150 groove per mm grating, and detected using a Si charge-coupled device (CCD) (Andor iDus BEX2-DD). Prior to each measurement, the CCD background was obtained and subsequently subtracted from the PL/EL acquisition. Time-resolved EL measurements were collected using a time-correlated single-photon counting (TCSPC) module. The signal was detected with a low dark count avalanche photodiode operating in single-photon counting mode (IDQuantique). The timing for the TCSPC was determined using pulses generated with the same phase/frequency as the square wave applied to the gate of the device. PL and EL imaging were performed in a fluorescence microscopy setup using a 470 nm LED as the excitation source and a CCD detector (Andor Luca) to acquire images. For EL imaging, the illumination source was turned off. Macroscopic photographs and videos of EL were taken using a CMOS camera with a telephoto lens; images are single exposures taken in ambient room lighting. Note that for the macroscopic EL photographs, the cold filter was removed from the camera. All measurements reported in this paper are taken at room temperature, in an ambient lab environment, with no device encapsulation. Transistor I_d - V_g characteristics as well as C - f measurements of the gate oxide (Supplementary Fig. S21 and Supplementary Note 5) were taken using an Agilent B1500A semiconductor parameter analyzer.

Device simulations. Simulations were performed in Sentaurus TCAD, where the device structure consists of a monolayer of WSe_2 , with the following material parameters used: $E_g = 2.34$ eV, $\epsilon = 4\epsilon_0$, $\mu_n = \mu_p = 100 \text{ cm}^2 \text{ V}^{-1} \text{ s}$, $\tau_{n,\text{SRH}} = \tau_p$, $\text{SRH} = 2.5$ ns, $m_e^* = m_h^* = 0.345 m_0$, and a SiO_2 gate oxide thickness of 50 nm. A non-local tunneling model accounts for the dependence of tunneling currents at the metal-semiconductor contact. Simulation snapshots record the transient device characteristics, recombination rates, and carrier densities, at several different instances, immediately before, during and after a V_g pulse edge. The slew rate of the gate-voltage pulse used in the transient simulations is 2.4 V per ns. For simulations shown in Fig. 2, Supplementary Figs. 5, 6, and 13 ambipolar contacts ($\phi_{\text{Bn}} = \phi_{\text{Bp}} = E_g/2$) were used. The recombination models employed here are based on free carriers and material properties for GaAs were used for all parameters not specified above; however, the simulation adequately captures the physics of device operation and light emission qualitatively. For accurate quantitative analysis of this device, first-principle calculations and inclusion of the exciton physics of 2D materials are needed.

Data availability. The data that support the findings of this study are available from the corresponding author upon request.

Received: 2 November 2017 Accepted: 29 January 2018

Published online: 26 March 2018

References

- Xia, F., Wang, H., Xiao, D., Dubey, M. & Ramasubramaniam, A. Two-dimensional material nanophotonics. *Nat. Photon.* **8**, 899–907 (2014).
- Mak, K. F., Lee, C., Hone, J., Shan, J. & Heinz, T. F. Atomically thin MoS_2 : a new direct-gap semiconductor. *Phys. Rev. Lett.* **105**, 136805 (2010).
- Amani, M. et al. Near-unity photoluminescence quantum yield in MoS_2 . *Science* **350**, 1065–1068 (2015).
- Radisavljevic, B., Radenovic, A., Brivio, J., Giacometti, V. & Kis, A. Single-layer MoS_2 transistors. *Nat. Nanotechnol.* **6**, 147–150 (2011).
- Desai, S. B. et al. MoS_2 transistors with 1-nanometer gate lengths. *Science* **354**, 99–101 (2016).
- Amani, M. et al. Recombination kinetics and effects of superacid treatment in sulfur- and selenium-based transition metal dichalcogenides. *Nano Lett.* **16**, 2786–2791 (2016).
- Wu, W. et al. Piezoelectricity of single-atomic-layer MoS_2 for energy conversion and piezotronics. *Nature* **514**, 470–474 (2014).
- Zhang, Y. J., Oka, T., Suzuki, R., Ye, J. T. & Iwasa, Y. Electrically switchable chiral light-emitting transistor. *Science* **344**, 725–728 (2014).
- Fang, H. et al. Strong interlayer coupling in van der Waals heterostructures built from single-layer chalcogenides. *Proc. Natl Acad. Sci. USA* **111**, 6198–6202 (2014).
- Kang, K. et al. High-mobility three-atom-thick semiconducting films with wafer-scale homogeneity. *Nature* **520**, 656–660 (2015).
- Ahn, G. H. et al. Strain-engineered growth of two-dimensional materials. *Nat. Commun.* **8**, 608 (2017).

12. Nakamura, S., Senoh, M. S. & Mukai, T. High-power InGaN/GaN double-heterostructure violet light emitting diodes. *Appl. Phys. Lett.* **62**, 2390–2392 (1993).
13. Ross, J. S. et al. Electrically tunable excitonic light-emitting diodes based on monolayer WSe₂ p-n junctions. *Nat. Nanotechnol.* **9**, 268–272 (2014).
14. Baugher, B. W. H., Churchill, H. O. H., Yang, Y. & Jarillo-Herrero, P. Optoelectronic devices based on electrically tunable p-n diodes in a monolayer dichalcogenide. *Nat. Nano* **9**, 262–267 (2014).
15. Pospischil, A., Furchi, M. M. & Mueller, T. Solar-energy conversion and light emission in an atomic monolayer p-n diode. *Nat. Nanotechnol.* **9**, 257–261 (2014).
16. Withers, F. et al. Light-emitting diodes by band-structure engineering in van der Waals heterostructures. *Nat. Mater.* **14**, 301–306 (2015).
17. Withers, F. et al. WSe₂ light-emitting tunneling transistors with enhanced brightness at room temperature. *Nano Lett.* **15**, 8223–8228 (2015).
18. Butler, K. H., Jerome, C. W. & Waymouth, J. F. The electroluminescent lamp: a new light source. *Electr. Eng.* **73**, 524–528 (1954).
19. Wood, V. et al. Electroluminescence from nanoscale materials via field-driven ionization. *Nano Lett.* **11**, 2927–2932 (2011).
20. Cho, S. H. et al. High performance AC electroluminescence from colloidal quantum dot hybrids. *Adv. Mater.* **24**, 4540–4546 (2012).
21. Xu, J., Carroll, D. L., Smith, G. M., Dun, C. & Cui, Y. Achieving high performance in AC-field driven organic light sources. *Sci. Rep.* **6**, 24116 (2016).
22. Gutierrez, H. R. et al. Extraordinary room-temperature photoluminescence in triangular WS₂ monolayers. **13**, 3447–3454 (2013).
23. Tonndorf, P. et al. Photoluminescence emission and Raman response of monolayer MoS₂, MoSe₂, and WSe₂. *Opt. Express* **21**, 4908–4916 (2013).
24. Ramasubramaniam, A. Large excitonic effects in monolayers of molybdenum and tungsten dichalcogenides. *Phys. Rev. B* **86**, 115409 (2012).
25. Lien, D.-H. et al. Engineering light outcoupling in 2D materials. *Nano Lett.* **15**, 1356–1361 (2015).
26. Yablonovitch, E., Gmitter, T. J. & Bhat, R. Inhibited and enhanced spontaneous emission from optically thin AlGaAs/GaAs double heterostructures. *Phys. Rev. Lett.* **61**, 2546–2549 (1988).
27. Ciraci, C. et al. Probing the ultimate limits of plasmonic enhancement. *Science* **337**, 1072–1074 (2012).
28. Eggleston, M. S., Messer, K., Zhang, L., Yablonovitch, E. & Wu, M. C. Optical antenna enhanced spontaneous emission. *Proc. Natl Acad. Sci. USA* **112**, 1704–1709 (2014).
29. Wu, S. et al. Monolayer semiconductor nanocavity lasers with ultralow thresholds. *Nature* **520**, 69–72 (2015).
30. Ma, D. et al. A universal etching-free transfer of MoS₂ films for applications in photodetectors. *Nano Res.* **8**, 3662–3672 (2015).

Acknowledgements

We thank A.B. Sachid for advice on device simulations. Device fabrication and characterization were funded by the National Science Foundation (NSF) under program number 1623038. Materials growth was supported by the U.S. Department of Energy, Office of Science, Office of Basic Energy Sciences, Materials Sciences and Engineering Division under contract no. DE-AC02-05CH11231 within the Electronic Materials Program (KC1201). S.B.D. acknowledges the Lam Research Graduate Fellowship.

Author contributions

D.-H.L., M.A., and A.J. conceived the idea for the project and designed the experiments. D.-H.L. and M.A. performed optical measurements. M.A. and G.H.A. fabricated devices. G.H.A. performed the synthesis of WSe₂. S.B.D. performed device simulations. S.B.D. and K.H. performed analytical modeling. D.-H.L., M.A., S.B.D., and A.J. analyzed the data. M.A., D.-H.L., S.B.D., and A.J. wrote the manuscript. All authors discussed the results and commented on the manuscript.

Additional information

Supplementary Information accompanies this paper at <https://doi.org/10.1038/s41467-018-03218-8>.

Competing interests: The authors declare no competing financial interests.

Reprints and permission information is available online at <http://npg.nature.com/reprintsandpermissions/>

Publisher's note: Springer Nature remains neutral with regard to jurisdictional claims in published maps and institutional affiliations.



Open Access This article is licensed under a Creative Commons Attribution 4.0 International License, which permits use, sharing, adaptation, distribution and reproduction in any medium or format, as long as you give appropriate credit to the original author(s) and the source, provide a link to the Creative Commons license, and indicate if changes were made. The images or other third party material in this article are included in the article's Creative Commons license, unless indicated otherwise in a credit line to the material. If material is not included in the article's Creative Commons license and your intended use is not permitted by statutory regulation or exceeds the permitted use, you will need to obtain permission directly from the copyright holder. To view a copy of this license, visit <http://creativecommons.org/licenses/by/4.0/>.

© The Author(s) 2018