



香港城市大學
City University of Hong Kong

專業 創新 胸懷全球
Professional · Creative
For The World

CityU Scholars

Contrasting seasonality of African swine fever outbreaks and its drivers

Kim, Younjung; Nouvellet, Pierre; Rogoll, Lisa; Staubach, Christoph; Schulz, Katja; Sauter-Louis, Carola; Pfeiffer, Dirk Udo; Fournié, Guillaume

Published in:
Epidemics

Published: 01/09/2023

Document Version:
Final Published version, also known as Publisher's PDF, Publisher's Final version or Version of Record

License:
CC BY

Publication record in CityU Scholars:
[Go to record](#)

Published version (DOI):
[10.1016/j.epidem.2023.100703](https://doi.org/10.1016/j.epidem.2023.100703)

Publication details:
Kim, Y., Nouvellet, P., Rogoll, L., Staubach, C., Schulz, K., Sauter-Louis, C., Pfeiffer, D. U., & Fournié, G. (2023). Contrasting seasonality of African swine fever outbreaks and its drivers. *Epidemics*, 44, Article 100703. <https://doi.org/10.1016/j.epidem.2023.100703>

Citing this paper

Please note that where the full-text provided on CityU Scholars is the Post-print version (also known as Accepted Author Manuscript, Peer-reviewed or Author Final version), it may differ from the Final Published version. When citing, ensure that you check and use the publisher's definitive version for pagination and other details.

General rights

Copyright for the publications made accessible via the CityU Scholars portal is retained by the author(s) and/or other copyright owners and it is a condition of accessing these publications that users recognise and abide by the legal requirements associated with these rights. Users may not further distribute the material or use it for any profit-making activity or commercial gain.

Publisher permission

Permission for previously published items are in accordance with publisher's copyright policies sourced from the SHERPA RoMEO database. Links to full text versions (either Published or Post-print) are only available if corresponding publishers allow open access.

Take down policy

Contact lbscholars@cityu.edu.hk if you believe that this document breaches copyright and provide us with details. We will remove access to the work immediately and investigate your claim.



Contrasting seasonality of African swine fever outbreaks and its drivers

A B S T R A C T

The seasonality of African swine fever (ASF) outbreaks in domestic pigs differs between temperate and subtropical/tropical regions. We hypothesise that variations in the importance of wild boar-to-farm and farm-to-farm transmission routes shape these contrasting patterns, and we emphasise the implications for effective ASF control.

African swine fever (ASF) is a devastating viral disease that has affected many of the world's domestic pig and wild boar populations, rapidly spreading from sub-Saharan Africa to Europe, Asia, and the Americas (FAO, 2022). The co-circulation of the ASF virus (ASFV) in domestic pigs and wild boars exposes farms to a continued risk of ASFV introduction via both wild boar-to-farm and farm-to-farm transmission (Guinat et al., 2016). Yet, the effective control of ASFV in domestic pigs requires understanding the relative contributions of these two transmission routes to viral incursions on farms.

We present the contrasting seasonal patterns of ASF outbreaks on farms between different climatic zones. Based on this, we discuss how these patterns could result from variations in the dominant transmission route, highlight major uncertainties about the underlying epidemiological and ecological drivers, and suggest how further research could address these knowledge gaps.

The reported number of ASFV-infected herds show pronounced seasonality in Europe and temperate regions of Asia (Fig. 1A), with peaks in summer/autumn. It is unlikely that these summer/autumn peaks could be solely attributed to seasonal changes in pig production. Higher pig production would be expected to lead to more frequent movements of pigs, personnel, and vehicles—resulting in increased contacts with potentially contaminated pig value chain actors and environmental sources. However, pig production in Europe, where ASFV has been circulating for the longest time outside sub-Saharan Africa, and China did not increase during the summer and autumn (Fig. S1). In the Republic of Korea, pig production peaks in summer (Fig. S1), and farm-to-farm transmission has been suggested to have played a role in the country's first epidemic in 2019 (Yoo et al., 2021). However, since 2020, farm outbreaks in the country have remained too sporadic (with a median of 116 days between successively reported farm outbreaks) to conclude that farm-to-farm transmission alone drove the observed seasonal patterns.

These observations raise the possibility that ASFV transmission dynamics in wild boar populations has contributed to these summer/autumn peaks in ASF incidence on farms in temperate regions. In fact, wild boars engage in seasonal reproduction in temperate regions, mostly

mating in winter and farrowing in spring, although due to mild winters, this seasonality in the reproduction cycle is less clear than it used to be (Pascual-Rico et al., 2022). The associated changes in social group size, structures, and behaviours could result in seasonal transmission among wild boars, thereby posing a seasonally varying risk of ASFV introduction to farms, as is the case for some other infectious diseases (Plowright et al., 2016). Furthermore, human and wild boar activities are likely to increase during crop harvesting seasons over the summer, further promoting spillover risk. This risk may be further increased by the higher abundance of hematophagous insects in summer, although their role in ASFV transmission outside Africa warrants further investigation (Guinat et al., 2016).

It must be noted that this alternative hypothesis does not seem to be supported by ASF incidence patterns observed in wild boars, considering that they show peaks mostly in winter (Fig. 1B). However, these observations could be strongly biased by seasonal variations in surveillance efforts due to wild boar hunting in temperate regions occurring mainly in winter (Schulz et al., 2022). Reflecting this, ASFV transmission dynamics in wild boars and its seasonal impact on viral incursions on farms are still poorly understood as most studies investigating the interface between wild boars and domestic pigs are based only on ASFV incidence in wild boars, without explicitly accounting for variations in surveillance efforts (Hayes et al., 2021). Furthermore, the occurrence of ASF outbreaks on farms can be influenced by diverse local factors, leading to variations within climatic zones and across years. For instance, in 2022, in Romania, ASF outbreaks among small-scale farms (i.e. fewer than 100 pigs) peaked in both summer and winter, while other European Union Member States continued to experience distinct peaks during the summer, regardless of farm size (European Food Safety Authority et al., 2023).

In subtropical/tropical Asian regions, reported farm cases show less pronounced seasonality (Fig. 1C). First, wild boar breeding in these regions is often protracted or occurs throughout the year (Indian River Lagoon Species Inventory), suggesting that wild boar population dynamics and, consequently, ASFV transmission dynamics in these populations and the risk they pose to farms may differ compared to

<https://doi.org/10.1016/j.epidem.2023.100703>

Received 30 January 2023; Received in revised form 30 May 2023; Accepted 12 June 2023

Available online 22 June 2023

1755-4365/© 2023 The Author(s). Published by Elsevier B.V. This is an open access article under the CC BY license (<http://creativecommons.org/licenses/by/4.0/>).

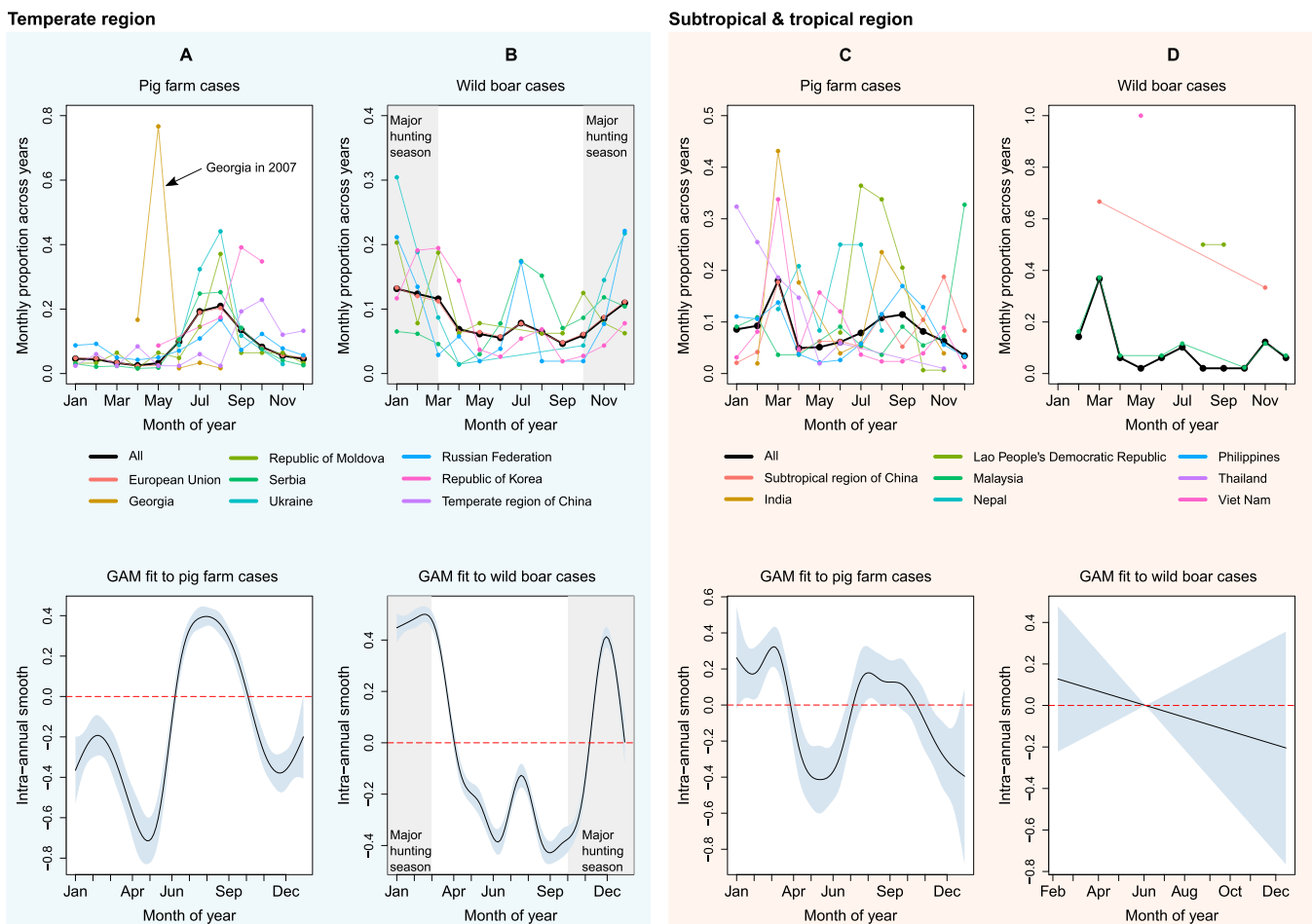


Fig. 1. The seasonal trend in ASF pig farm and wild boar cases by climatic zone. The plots on the first row show the proportion of ASF cases (y-axis) over month of year (x-axis), with different colours representing different countries or regions. Black points and lines represent the seasonal trend averaged over countries or regions with the same climatic zone. The plots on the second row show intra-annual smooth term estimates (y-axis) over month of year (x-axis) obtained by fitting a generalised additive model to incidence data by week of year. The analysis of the seasonal trend is based on FAO EMPRES Global Animal Disease Information System (EMPRES-i) data [downloaded September 24, 2022]. Only countries with more than 50 domestic pig farm cases before Sep 24, 2022, including those within the EU, are included to show the seasonal trend in countries where domestic pig farms are likely to have been exposed to a continuous risk of ASFV introduction. ASF cases in the countries of the EU are grouped, considering that ASF surveillance/control regulations are relatively more homogeneous within the EU compared with other countries. Conversely, ASF cases in China are separated by climatic zone, given that the country’s land spans different climatic zones.

temperate climatic regions. In addition, if pig production varies seasonally, as observed for poultry production in some of those regions (Delabougliise et al., 2017), it could promote farm-to-farm viral transmission during high production periods. However, discerning the relative contribution of different transmission routes is expected to be more challenging in those regions considering the often limited availability of epidemiological and ecological data, especially of ASF surveillance data pertaining to wild boars (Fig. 1D) and farms (Vergne et al., 2020).

In conclusion, seasonal trends in farm outbreaks and their differences between climatic zones highlight the need to better understand the interface between wild boars and domestic pigs. To achieve this, it is crucial to assess ASFV transmission dynamics in wild boars and its potential associations with viral incursions on farms, taking into account wild boar ecology and variations in surveillance efforts. Furthermore, while these seasonal patterns differ between climatic zones, there are also variations within each zone and across years. These likely result from heterogeneous epidemiological contexts, emphasising the importance of characterising local pig value chains and understanding the way in which they may influence the observed seasonality in ASF outbreaks. Conducting such research would help quantify the relative contributions of wild boar-to-farm and farm-to-farm transmission routes to ASFV farm outbreaks, thus guiding optimal ASFV prevention and control strategies.

These are challenging but important tasks.

Acknowledgements

PN and YK acknowledge support from the BBSRC, through the ERA-NET ICRAD program (BB/V019945/1).

Appendix A. Supporting information

Supplementary data associated with this article can be found in the online version at [doi:10.1016/j.epidem.2023.100703](https://doi.org/10.1016/j.epidem.2023.100703).

References

Delabougliise, A., Choisy, M., Phan, T.D., Antoine-Moussiaux, N., Peyre, M., Vu, T.D., Pfeiffer, D.U., Fournié, G., 2017. Economic factors influencing zoonotic disease dynamics: demand for poultry meat and seasonal transmission of avian influenza in Vietnam. *Sci. Rep.* 7, 5905.

European Food Safety Authority, S., Karl, Boklund, A., Podgórski, T., Vergne, T., Abrahamantes, J.C., Papanikolaou, A., Zancanaro, G., Mur, L., 2023. Epidemiological analysis of African swine fever in the European Union during 2022. *EFSA Journal* 21, e08016.

FAO, 2022. FAO EMPRES Global Animal Disease Information System (EMPRES-i).

- Guinat, C., Gogin, A., Blome, S., Keil, G., Pollin, R., Pfeiffer, D.U., Dixon, L., 2016. Transmission routes of African swine fever virus to domestic pigs: current knowledge and future research directions. *Vet. Rec.* 178, 262–267.
- Hayes, B.H., Andraud, M., Salazar, L.G., Rose, N., Vergne, T., 2021. Mechanistic modelling of African swine fever: a systematic review. *Prev. Vet. Med.* 191, 105358.
- Indian River Lagoon Species Inventory, *Sus scrofa*. The Smithsonian Marine Station at Fort Pierce and the Indian River Lagoon National Estuary Program.
- Pascual-Rico, R., Acevedo, P., Apollonio, M., Ja, B.A., G, B., L, d., Ferroglio, E., A, G., Keuling, O., Plis, K., Podgórski, T., L, P., Ruiz-Rodríguez, C., Scandura, M., M, S., Soriguier, R., Gc, S., Vada, R., Zanet, S., Carpio, A., 2022. Wild boar ecology: a review of wild boar ecological and demographic parameters by bioregion all over Europe. *EFSA Supporting Publications* 19.
- Plowright, R.K., Peel, A.J., Streicker, D.G., Gilbert, A.T., McCallum, H., Wood, J., Baker, M.L., Restif, O., 2016. Transmission or within-host dynamics driving pulses of zoonotic viruses in reservoir-host populations. *PLoS Negl. Trop. Dis.* 10, e0004796.
- Schulz, K., Oļševskis, E., Viltrop, A., Masiulis, M., Staubach, C., Nurmoja, I., Lamberga, K., Serzants, M., Malakauskas, A., Conraths, F.J., Sauter-Louis, C., 2022. Eight years of african swine fever in the baltic states: epidemiological reflections. *Pathogens* 11.
- Vergne, T., Guinat, C., Pfeiffer, D.U., 2020. Undetected circulation of African Swine Fever in Wild Boar, Asia. *Emerg. Infect. Dis.* 26, 2480–2482.
- Yoo, D.S., Kim, Y., Lee, E.S., Lim, J.S., Hong, S.K., Lee, I.S., Jung, C.S., Yoon, H.C., Wee, S.H., Pfeiffer, D.U., Fournié, G., 2021. Transmission dynamics of African Swine fever virus, South Korea, 2019. *Emerg. Infect. Dis.* 27, 1909–1918.

Younjung Kim
University of Sussex, Brighton, UK

Pierre Nouvellet
University of Sussex, Brighton, UK
Imperial College London, London, UK

Lisa Rogoll, Christoph Staubach, Katja Schulz, Carola Sauter-Louis
Friedrich-Loeffler-Institut, Greifswald-Insel Riems, Germany

Dirk Udo Pfeiffer
The Royal Veterinary College, London, UK
City University of Hong Kong, Hong Kong SAR, Hong Kong

Guillaume Fournié*
The Royal Veterinary College, London, UK
Université de Lyon, INRAE, VetAgro Sup, UMR EPIA, Marcy l'Etoile, France
Université Clermont Auvergne, INRAE, VetAgro Sup, UMR EPIA, Saint-Gènes-Champanelle, France

* Correspondence to: UMR EPIA, 1 avenue Bourgelat, 69280 Marcy l'Etoile, France.
E-mail address: guillaume.fournie@inrae.fr (G. Fournié).