



香港城市大學
City University of Hong Kong

專業 創新 胸懷全球
Professional · Creative
For The World

CityU Scholars

Generalized Yule-Walker Estimation for Spatio-Temporal Models with Unknown Diagonal Coefficients

Dou, Baojun; Parrella, Maria Lucia; Yao, Qiwei

Published in:
Journal of Econometrics

Published: 01/10/2016

Document Version:
Final Published version, also known as Publisher's PDF, Publisher's Final version or Version of Record

License:
CC BY

Publication record in CityU Scholars:
[Go to record](#)

Published version (DOI):
[10.1016/j.jeconom.2016.05.014](https://doi.org/10.1016/j.jeconom.2016.05.014)

Publication details:
Dou, B., Parrella, M. L., & Yao, Q. (2016). Generalized Yule-Walker Estimation for Spatio-Temporal Models with Unknown Diagonal Coefficients. *Journal of Econometrics*, 194(2), 369-382. Advance online publication. <https://doi.org/10.1016/j.jeconom.2016.05.014>

Citing this paper

Please note that where the full-text provided on CityU Scholars is the Post-print version (also known as Accepted Author Manuscript, Peer-reviewed or Author Final version), it may differ from the Final Published version. When citing, ensure that you check and use the publisher's definitive version for pagination and other details.

General rights

Copyright for the publications made accessible via the CityU Scholars portal is retained by the author(s) and/or other copyright owners and it is a condition of accessing these publications that users recognise and abide by the legal requirements associated with these rights. Users may not further distribute the material or use it for any profit-making activity or commercial gain.

Publisher permission

Permission for previously published items are in accordance with publisher's copyright policies sourced from the SHERPA RoMEO database. Links to full text versions (either Published or Post-print) are only available if corresponding publishers allow open access.

Take down policy

Contact lbscholars@cityu.edu.hk if you believe that this document breaches copyright and provide us with details. We will remove access to the work immediately and investigate your claim.



Generalized Yule–Walker estimation for spatio-temporal models with unknown diagonal coefficients



Baojun Dou^a, Maria Lucia Parrella^b, Qiwei Yao^{a,c,*}

^a Department of Statistics, London School of Economics, London, United Kingdom

^b Department of Economics and Statistics, University of Salerno, Fisciano, Italy

^c Guanghua School of Management, Peking University, Beijing, China

ARTICLE INFO

Article history:

Available online 30 May 2016

JEL classification:

C13
C23
C32

Keywords:

α -mixing
Dynamic panels
High dimensionality
Least squares estimation
Spatial autoregression
Stationarity

ABSTRACT

We consider a class of spatio-temporal models which extend popular econometric spatial autoregressive panel data models by allowing the scalar coefficients for each location (or panel) different from each other. To overcome the innate endogeneity, we propose a generalized Yule–Walker estimation method which applies the least squares estimation to a Yule–Walker equation. The asymptotic theory is developed under the setting that both the sample size and the number of locations (or panels) tend to infinity under a general setting for stationary and α -mixing processes, which includes spatial autoregressive panel data models driven by *i.i.d.* innovations as special cases. The proposed methods are illustrated using both simulated and real data.

© 2016 The Authors. Published by Elsevier B.V.
This is an open access article under the CC BY license
(<http://creativecommons.org/licenses/by/4.0/>).

1. Introduction

The class of spatial autoregressive (SAR) models is introduced to model cross sectional dependence of different economic individuals at different locations (Cliff and Ord, 1973). More recent developments extend SAR models to spatial dynamic panel data (SDPD) models, i.e. adding time lagged terms to account for serial correlations across different locations. See, e.g. Lee and Yu (2010). Baltagi et al. (2003) consider a static spatial panel model where the error term is a SAR model. Lin and Lee (2010) show that in the presence of heteroskedastic disturbances, the maximum likelihood estimator for the SAR models without taking into account the heteroskedasticity is generally inconsistent and proposes an alternative GMM estimation method. Computationally the GMM methods are more efficient than the QML estimation (Lee, 2001). Lee and Yu (2010) classify SDPD models into three categories: stable, spatial cointegration and explosive cases. As pointed out by Bai and Shi (2011), the cases with a large number of cross sectional units and a long history are rare. Hence it is pertinent to consider the setting with short time spans in order to include as many

locations as possible. Both estimation method and asymptotic analysis need to be adapted under this new setting. Yu et al. (2008, 2012) investigate the asymptotic properties when both the number of locations and the length of time series tend to infinity for both the stable case and spatial cointegration case, and show that QMLE is consistent.

Motivated by the evidence in some practical examples, we extend the model in Yu et al. (2008, 2012) by allowing the scalar coefficients for each location (or panel) different from each other. This increase in model capacity comes with the cost of estimating substantially more parameters. In fact that the number of the parameters in this new setting is in the order of the number of locations. The model considered in this paper has four additive components: a pure spatial effect, a pure dynamic effect, a time-lagged spatial effect and a white noise. Due to the innate endogeneity, the conventional regression estimation methods such as the least squares method directly based on the model lead to inconsistent estimators. To overcome the difficulties caused by the endogeneity, we propose a generalized Yule–Walker type estimator for estimating the parameters in the model, which applies the least squares estimation to a Yule–Walker equation. The asymptotic normality of the proposed estimators is established under the setting that both the sample size n and the number of locations (or panels) p tend to infinity. Therefore the number of parameters to be estimated also diverges to infinity, which is

* Correspondence to: Department of Statistics, London School of Economics, Houghton Street, London, WC2A 2AE, United Kingdom.
E-mail address: q.yao@lse.ac.uk (Q. Yao).

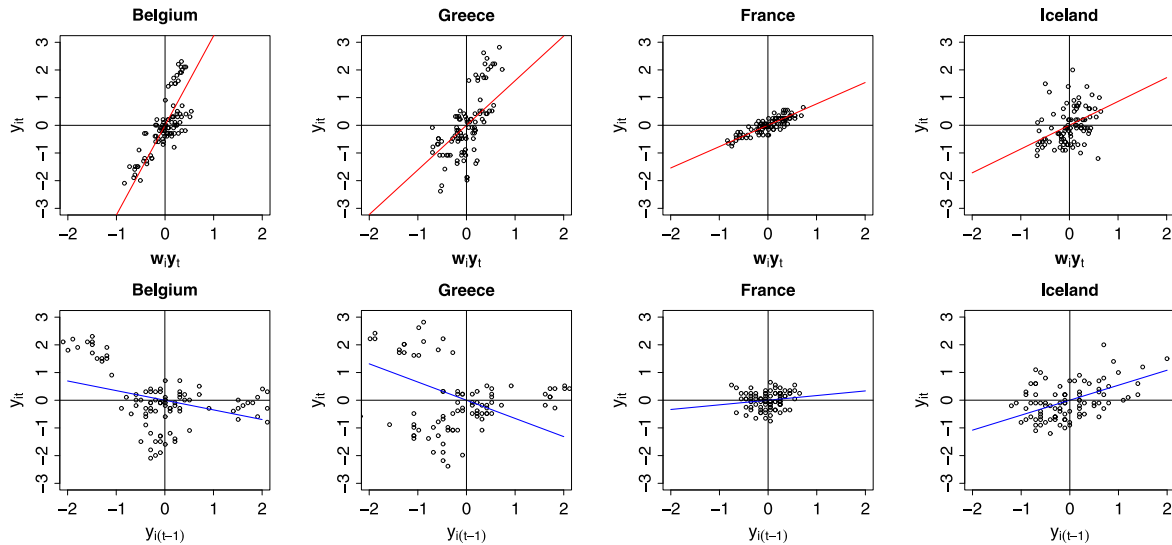


Fig. 1. Plots of the monthly change rates $y_{i,t}$ of CPI against the spatial regressor $\mathbf{w}_i^T \mathbf{y}_t$ (on the top) and the dynamic regressor $y_{i,t-1}$ (on the bottom) for four EU member states in 2003–2010. The superimposed straight lines were estimated by the newly proposed method in Section 2.2.

a marked difference from, e.g., Yu et al. (2012). We develop the asymptotic properties under a general setting for stationary and α -mixing processes, which includes the spatial autoregressive panel data models driven by *i.i.d.* innovations as special cases.

The rest of the paper is organized as follows. Section 2 introduces the new model, its motivation and the generalized Yule–Walker estimation method. The asymptotic theory for the proposed estimation method is presented in Section 3. Simulation results and real data analysis are reported, respectively, in Sections 4 and 5. All the technical proofs are relegated to an Appendix.

2. Model and estimation method

2.1. Models

The model considered in this paper is of the following form:

$$\mathbf{y}_t = D(\lambda_0)\mathbf{W}\mathbf{y}_t + D(\lambda_1)\mathbf{y}_{t-1} + D(\lambda_2)\mathbf{W}\mathbf{y}_{t-1} + \boldsymbol{\varepsilon}_t, \quad (1)$$

where $\mathbf{y}_t = (y_{1,t}, \dots, y_{p,t})^T$ represents the observations from p locations at time t , $D(\lambda_k) = \text{diag}(\lambda_{k1}, \dots, \lambda_{kp})$ and λ_{kj} is the unknown coefficient parameter for the j th location, and \mathbf{W} is the $p \times p$ spatial weight matrix which measures the dependence among different locations. All the main diagonal elements of \mathbf{W} are zero. It is a common practice in spatial econometrics to assume \mathbf{W} known. For example, we may let $w_{ij} = 1/(1+d_{ij})$, for $i \neq j$, where $d_{ij} \geq 0$ is an appropriate distance between the i th and the j th location. It can simply be the geographical distance between the two locations or the distance reflecting the correlation or association between the variables at the two locations. In the above model, $D(\lambda_0)$ captures the pure spatial effect, $D(\lambda_1)$ captures the pure dynamic effect, and $D(\lambda_2)$ captures the time-lagged spatial effect. We also assume that the error term $\boldsymbol{\varepsilon}_t = (\varepsilon_{1,t}, \varepsilon_{2,t}, \dots, \varepsilon_{p,t})^T$ in (1) satisfies the condition $\text{Cov}(\mathbf{y}_{t-1}, \boldsymbol{\varepsilon}_t) = \mathbf{0}$. When $\lambda_{k1} = \dots = \lambda_{kp}$ for $k = 0, 1, 2$, (1) reduces to the model of Yu et al. (2008), in which there are only 3 unknown regressive coefficient parameters. In general the regression function in (1) contains $3p$ unknown parameters.

The extension to use different scalar coefficients for different locations is motivated by practical needs. For example, we analyze the monthly change rates of the consumer price index (CPI) for the EU member states over the years 2003–2010. The detailed analysis for this data set will be presented in Section 5. Fig. 1 presents the scatter-plots of the observed data $y_{i,t}$ versus the spatial regressor $\mathbf{w}_i^T \mathbf{y}_t$ and $y_{i,t-1}$, for some of the EU member states, where \mathbf{w}_i^T is the

i th row vector of the weight matrix \mathbf{W} which is taken as the sample correlation matrix with all the elements on the main diagonal set to be 0. The superimposed straight lines are the simple regression lines estimated using the newly proposed method in Section 2.2. It is clear from Fig. 1 that at least Greece and Belgium should have a different slope from those of France or Iceland.

2.2. Generalized Yule–Walker estimation

As \mathbf{y}_t occurs on both sides of (1), $\mathbf{W}\mathbf{y}_t$ and $\boldsymbol{\varepsilon}_t$ are correlated with each other. Applying least squares method directly based on regressing \mathbf{y}_t on $(\mathbf{W}\mathbf{y}_t, \mathbf{y}_{t-1}, \mathbf{W}\mathbf{y}_{t-1})$ leads to inconsistent estimators. On the other hand, applying the maximum likelihood estimation requires to profile a $p \times p$ nuisance parameter matrix $\boldsymbol{\Sigma}_\varepsilon = \text{Var}(\boldsymbol{\varepsilon}_t)$, which leads to a complex nonlinear optimization problem. Furthermore when p is large in relation to n , the numerical stability is of concern.

We propose below a new estimation method which applies the least squares method to each individual row of a Yule–Walker equation. To this end, let $\boldsymbol{\Sigma}_k = \text{Cov}(\mathbf{y}_{t+k}, \mathbf{y}_t)$ for any $k \geq 0$. Note that we always assume that \mathbf{y}_t is stationary, see condition A2 and Remark 1 in Section 3. Then the Yule–Walker equation below follows from (1) directly.

$$(\mathbf{I} - D(\lambda_0)\mathbf{W})\boldsymbol{\Sigma}_1 = (D(\lambda_1) + D(\lambda_2)\mathbf{W})\boldsymbol{\Sigma}_0,$$

where \mathbf{I} is a $p \times p$ identity matrix. The i th row of the above equation is

$$(\mathbf{e}_i^T - \lambda_{0i}\mathbf{w}_i^T)\boldsymbol{\Sigma}_1 = (\lambda_{1i}\mathbf{e}_i^T + \lambda_{2i}\mathbf{w}_i^T)\boldsymbol{\Sigma}_0, \quad i = 1, \dots, p, \quad (2)$$

where \mathbf{w}_i is the i th row vector of \mathbf{W} , and \mathbf{e}_i is the unit vector with the i th element equal to 1. Note that (2) is a system of p linear equations with three unknown parameters λ_{0i} , λ_{1i} and λ_{2i} . Since $\mathbf{E}\mathbf{y}_t = \mathbf{0}$, we replace $\boldsymbol{\Sigma}_1$ and $\boldsymbol{\Sigma}_0$ by the sample (auto)covariance matrices

$$\widehat{\boldsymbol{\Sigma}}_1 = \frac{1}{n} \sum_{t=1}^n \mathbf{y}_t \mathbf{y}_{t-1}^T \quad \text{and} \quad \widehat{\boldsymbol{\Sigma}}_0 = \frac{1}{n} \sum_{t=1}^n \mathbf{y}_t \mathbf{y}_t^T.$$

We estimate $(\lambda_{0i}, \lambda_{1i}, \lambda_{2i})^T$ by the least squares method, i.e. to solve the minimization problem

$$\min_{\lambda_{0i}, \lambda_{1i}, \lambda_{2i}} \|\widehat{\boldsymbol{\Sigma}}_1^T (\mathbf{e}_i - \lambda_{0i}\mathbf{w}_i) - \widehat{\boldsymbol{\Sigma}}_0 (\lambda_{1i}\mathbf{e}_i + \lambda_{2i}\mathbf{w}_i)\|_2^2.$$

The resulting estimators are called generalized Yule–Walker estimators which admit the explicit expression:

$$(\widehat{\lambda}_{0i}, \widehat{\lambda}_{1i}, \widehat{\lambda}_{2i})^T = (\widehat{\mathbf{X}}_i^T \widehat{\mathbf{X}}_i)^{-1} \widehat{\mathbf{X}}_i^T \widehat{\mathbf{Y}}_i, \tag{3}$$

where

$$\widehat{\mathbf{X}}_i = (\widehat{\boldsymbol{\Sigma}}_1^T \mathbf{w}_i, \widehat{\boldsymbol{\Sigma}}_0 \mathbf{e}_i, \widehat{\boldsymbol{\Sigma}}_0 \mathbf{w}_i) \quad \text{and} \quad \widehat{\mathbf{Y}}_i = \widehat{\boldsymbol{\Sigma}}_1^T \mathbf{e}_i.$$

More explicitly,

$$\widehat{\mathbf{X}}_i = \left(\frac{1}{n} \sum_{t=1}^n \mathbf{y}_{t-1} (\mathbf{w}_i^T \mathbf{y}_t), \frac{1}{n} \sum_{t=1}^n \mathbf{y}_{t-1} y_{i,t-1}, \frac{1}{n} \sum_{t=1}^n \mathbf{y}_{t-1} (\mathbf{w}_i^T \mathbf{y}_{t-1}) \right),$$

$$\widehat{\mathbf{Y}}_i = \frac{1}{n} \sum_{t=1}^n \mathbf{y}_{t-1} y_{i,t}.$$

Then it holds that for $i = 1, \dots, p$,

$$\begin{pmatrix} \widehat{\lambda}_{0i} \\ \widehat{\lambda}_{1i} \\ \widehat{\lambda}_{2i} \end{pmatrix} - \begin{pmatrix} \lambda_{0i} \\ \lambda_{1i} \\ \lambda_{2i} \end{pmatrix} = (\widehat{\mathbf{X}}_i^T \widehat{\mathbf{X}}_i)^{-1} \begin{pmatrix} \frac{1}{n} \sum_{t=1}^n \mathbf{y}_{t-1}^T (\mathbf{w}_i^T \mathbf{y}_t) \times \frac{1}{n} \sum_{t=1}^n \varepsilon_{i,t} \mathbf{y}_{t-1} \\ \frac{1}{n} \sum_{t=1}^n \mathbf{y}_{t-1}^T y_{i,t-1} \times \frac{1}{n} \sum_{t=1}^n \varepsilon_{i,t} \mathbf{y}_{t-1} \\ \frac{1}{n} \sum_{t=1}^n \mathbf{y}_{t-1}^T (\mathbf{w}_i^T \mathbf{y}_{t-1}) \times \frac{1}{n} \sum_{t=1}^n \varepsilon_{i,t} \mathbf{y}_{t-1} \end{pmatrix}.$$

2.3. A root- n consistent estimator for large p

When $p/\sqrt{n} \rightarrow \infty$, the estimator (3) admits non-standard convergence rates (i.e. the rates different from \sqrt{n}); see Theorems 2 and 4 in Section 3. Note that there are p equations with only 3 parameters in (2). Hence (3) can be viewed as a GMM for an over-determined scenario. The estimation may suffer when the number of estimation equations increases. See, for example, a similar result in Theorem 1 of Chang et al. (in press, 2014b). A further compounding factor is that the estimation for the covariance matrices $\boldsymbol{\Sigma}_0, \boldsymbol{\Sigma}_1$ using their sample counterparts leads to non-negligible errors even when $n \rightarrow \infty$. Below we propose an alternative estimator which restricts the number of the estimation equations to be used in order to restore the \sqrt{n} -consistency and the asymptotic normality.

For $i = 1, \dots, p$, put $\mathbf{X}_i = (\boldsymbol{\Sigma}_1^T \mathbf{w}_i, \boldsymbol{\Sigma}_0 \mathbf{e}_i, \boldsymbol{\Sigma}_0 \mathbf{w}_i)$. Note that the k th row of \mathbf{X}_i is $(\mathbf{e}_k^T \boldsymbol{\Sigma}_1^T \mathbf{w}_i, \mathbf{e}_k^T \boldsymbol{\Sigma}_0 \mathbf{e}_i, \mathbf{e}_k^T \boldsymbol{\Sigma}_0 \mathbf{w}_i)$ which is the covariance between $y_{k,t-1}$ and $(\mathbf{w}_i^T \mathbf{y}_t, y_{i,t-1}, \mathbf{w}_i^T \mathbf{y}_{t-1})$. Let

$$\rho_k^{(i)} = |\mathbf{e}_k^T \boldsymbol{\Sigma}_1^T \mathbf{w}_i| + |\mathbf{e}_k^T \boldsymbol{\Sigma}_0 \mathbf{e}_i| + |\mathbf{e}_k^T \boldsymbol{\Sigma}_0 \mathbf{w}_i|, \quad k = 1, \dots, p. \tag{4}$$

Then $\rho_k^{(i)}$ may be viewed as a measure for the correlation between $y_{k,t-1}$ and $(\mathbf{w}_i^T \mathbf{y}_t, y_{i,t-1}, \mathbf{w}_i^T \mathbf{y}_{t-1})^T$. When $\rho_k^{(i)}$ is small, say, close to 0, the k th equation in (2) carries little information on $(\lambda_{0i}, \lambda_{1i}, \lambda_{2i})$. Therefore as far as the estimation for $(\lambda_{0i}, \lambda_{1i}, \lambda_{2i})$ is concerned, we only keep the k th equation in (2) for large $\rho_k^{(i)}$.

Let \mathbf{z}_{t-1}^i be the $d_i \times 1$ vector consisting of those $y_{k,t-1}$ corresponding to the d_i largest $\widehat{\rho}_k^{(i)}$ ($1 \leq k \leq p$), where $\widehat{\rho}_k^{(i)}$ is defined as in (4) but with $(\boldsymbol{\Sigma}_1, \boldsymbol{\Sigma}_0)$ replaced by $(\widehat{\boldsymbol{\Sigma}}_1, \widehat{\boldsymbol{\Sigma}}_0)$. The new estimator is defined as

$$(\widetilde{\lambda}_{0i}, \widetilde{\lambda}_{1i}, \widetilde{\lambda}_{2i})^T = (\widehat{\mathbf{Z}}_i^T \widehat{\mathbf{Z}}_i)^{-1} \widehat{\mathbf{Z}}_i^T \widetilde{\mathbf{Y}}_i, \quad i = 1, \dots, p \tag{5}$$

where

$$\widehat{\mathbf{Z}}_i = \left(\frac{1}{n} \sum_{t=1}^n \mathbf{z}_{t-1}^i (\mathbf{w}_i^T \mathbf{y}_t), \frac{1}{n} \sum_{t=1}^n \mathbf{z}_{t-1}^i y_{i,t-1}, \frac{1}{n} \sum_{t=1}^n \mathbf{z}_{t-1}^i (\mathbf{w}_i^T \mathbf{y}_{t-1}) \right), \tag{6}$$

and

$$\widetilde{\mathbf{Y}}_i = \frac{1}{n} \sum_{t=1}^n \mathbf{z}_{t-1}^i y_{i,t}.$$

Now it holds that

$$\begin{pmatrix} \widetilde{\lambda}_{0i} \\ \widetilde{\lambda}_{1i} \\ \widetilde{\lambda}_{2i} \end{pmatrix} - \begin{pmatrix} \lambda_{0i} \\ \lambda_{1i} \\ \lambda_{2i} \end{pmatrix} = (\widehat{\mathbf{Z}}_i^T \widehat{\mathbf{Z}}_i)^{-1} \widehat{\mathbf{Z}}_i^T \begin{pmatrix} \frac{1}{n} \sum_{t=1}^n \varepsilon_{i,t} \mathbf{z}_{t-1}^i \\ \frac{1}{n} \sum_{t=1}^n \varepsilon_{i,t} \mathbf{z}_{t-1}^i \\ \frac{1}{n} \sum_{t=1}^n \varepsilon_{i,t} \mathbf{z}_{t-1}^i \end{pmatrix}.$$

Theorem 3 in Section 3 shows the asymptotic normality of the above estimator provided that the number of estimation equations used satisfies condition $d_i = o(\sqrt{n})$.

3. Theoretical properties

We introduce some notations first. For a $p \times 1$ vector $\mathbf{v} = (v_1, \dots, v_p)^T$, $\|\mathbf{v}\|_2 = \sqrt{\sum_{i=1}^p v_i^2}$ is the Euclidean norm, $\|\mathbf{v}\|_1 = \sum_{i=1}^p |v_i|$ is the L_1 norm. For a matrix $\mathbf{H} = (h_{ij})$, $\|\mathbf{H}\|_F = \sqrt{\text{tr}(\mathbf{H}^T \mathbf{H})}$ is the Frobenius norm, $\|\mathbf{H}\|_2 = \sqrt{\lambda_{\max}(\mathbf{H}^T \mathbf{H})}$ is the operator norm, where $\lambda_{\max}(\cdot)$ is the largest eigenvalue of a matrix. We denote by $|\mathbf{H}|$ the matrix $(|h_{ij}|)$ which is a matrix of the same size as \mathbf{H} but with the (i, j) th element h_{ij} replaced by $|h_{ij}|$. Note the determinant of \mathbf{H} is denoted by $\det(\mathbf{H})$. A strictly stationary process $\{\mathbf{y}_t\}$ is α -mixing if

$$\alpha(k) \equiv \sup_{A \in \mathcal{F}_{-\infty}^0, B \in \mathcal{F}_k^\infty} |P(A)P(B) - P(AB)| \rightarrow 0, \quad \text{as } k \rightarrow \infty, \tag{7}$$

where \mathcal{F}_j^j denotes the σ -algebra generated by $\{\mathbf{y}_t, i \leq t \leq j\}$. See, e.g., Section 2.6 of Fan and Yao (2003) for a compact review of α -mixing processes.

Let $\mathbf{S}(\lambda_0) \equiv \mathbf{I} - D(\lambda_0)\mathbf{W}$ be invertible. It follows from (1) that

$$\mathbf{y}_t = \mathbf{A}\mathbf{y}_{t-1} + \mathbf{S}^{-1}(\lambda_0)\boldsymbol{\varepsilon}_t,$$

where $\mathbf{A} = \mathbf{S}^{-1}(\lambda_0)(D(\lambda_1) + D(\lambda_2)\mathbf{W})$. Some regularity conditions are now in order.

- A1. The spatial weight matrix \mathbf{W} is known with zero main diagonal elements; $\mathbf{S}(\lambda_0)$ is invertible.
- A2. (a) The disturbance $\boldsymbol{\varepsilon}_t$ satisfies

$$\text{Cov}(\mathbf{y}_{t-1}, \boldsymbol{\varepsilon}_t) = 0.$$

- (b) The process $\{\mathbf{y}_t\}$ in model (1) is strictly stationary and α -mixing with $\alpha(k)$, defined in (7), satisfying

$$\sum_{k=1}^{\infty} \alpha(k)^{\frac{\gamma}{4+\gamma}} < \infty,$$

for some constant $\gamma > 0$.

- (c) For $\gamma > 0$ specified in (b) above,

$$\sup_p \mathbb{E} |\mathbf{w}_i^T \boldsymbol{\Sigma}_0 \mathbf{y}_t|^{4+\gamma} < \infty, \quad \sup_p \mathbb{E} |\mathbf{w}_i^T \boldsymbol{\Sigma}_1 \mathbf{y}_t|^{4+\gamma} < \infty,$$

$$\sup_p \mathbb{E} |\mathbf{e}_i^T \boldsymbol{\Sigma}_0 \mathbf{y}_t|^{4+\gamma} < \infty,$$

$$\sup_p \mathbb{E} |\mathbf{w}_i^T \mathbf{y}_t|^{4+\gamma} < \infty, \quad \sup_p \mathbb{E} |\mathbf{e}_i^T \mathbf{y}_t|^{4+\gamma} < \infty,$$

where \mathbf{w}_i denotes the i th row of \mathbf{W} . The diagonal elements of \mathbf{V}_i defined in (8) are bounded uniformly in p .

- A3. The rank of matrix $(\boldsymbol{\Sigma}_1^T \mathbf{w}_i, \boldsymbol{\Sigma}_0 \mathbf{e}_i, \boldsymbol{\Sigma}_0 \mathbf{w}_i)$ is equal to 3.

Remark 1. Condition A1 is standard for spatial econometric models. Condition A3 ensures that λ_{0i} , λ_{1i} and λ_{2i} are identifiable in (2). Condition A2(c) limits the dependence across different spatial locations. It is implied by, for example, the conditions imposed in Yu et al. (2008). Lemma 1 in the Appendix shows that Condition A2 holds with $\gamma = 4$ under conditions A1 and B1–B3. Note that conditions B1–B3 are often directly imposed in the spatial econometrics literature including, for example, Lee and Yu (2010), and Yu et al. (2008).

- B1. The errors $\varepsilon_{i,t}$ are i.i.d across i and t with $E(\varepsilon_{i,t}) = 0$, $\text{Var}(\varepsilon_{i,t}) = \sigma_0^2$, and $E|\varepsilon_{i,t}|^{4+\gamma} < \infty$. The density function of $\varepsilon_{i,t}$ exists.
- B2. The row and column sums of $|\mathbf{W}|$ and $|\mathbf{S}^{-1}(\lambda_0)|$ are bounded uniformly in p .
- B3. The row and column sums of $\sum_{j=0}^{\infty} |\mathbf{A}^j|$ are bounded uniformly in p .

Now we are ready to present the asymptotic properties for $(\widehat{\lambda}_{0i}, \widehat{\lambda}_{1i}, \widehat{\lambda}_{2i})^T$, $i = 1, \dots, p$, with fixed p and $n \rightarrow \infty$ first, and then $p \rightarrow \infty$ and $n \rightarrow \infty$.

3.1. Asymptotics for fixed p

For $i = 1, \dots, p$, let

$$\begin{aligned} \Sigma_{\mathbf{y}, \varepsilon_i}(j) &= \text{Cov}(\mathbf{y}_{t-1+j}\varepsilon_{i,t+j}, \mathbf{y}_{t-1}\varepsilon_{i,t}), \quad j = 0, 1, 2, \dots, \\ \Sigma_{\mathbf{y}, \varepsilon_i} &= \Sigma_{\mathbf{y}, \varepsilon_i}(0) + \sum_{j=1}^{\infty} [\Sigma_{\mathbf{y}, \varepsilon_i}(j) + \Sigma_{\mathbf{y}, \varepsilon_i}^T(j)], \\ \mathbf{V}_i &= \begin{pmatrix} \mathbf{w}_i^T \Sigma_1 \Sigma_1^T \mathbf{w}_i & \mathbf{w}_i^T \Sigma_1 \Sigma_0 \mathbf{e}_i & \mathbf{w}_i^T \Sigma_1 \Sigma_0 \mathbf{w}_i \\ \mathbf{w}_i^T \Sigma_1 \Sigma_0 \mathbf{e}_i & \mathbf{e}_i^T \Sigma_0 \Sigma_0 \mathbf{e}_i & \mathbf{e}_i^T \Sigma_0 \Sigma_0 \mathbf{w}_i \\ \mathbf{w}_i^T \Sigma_1 \Sigma_0 \mathbf{w}_i & \mathbf{e}_i^T \Sigma_0 \Sigma_0 \mathbf{w}_i & \mathbf{w}_i^T \Sigma_0 \Sigma_0 \mathbf{w}_i \end{pmatrix}, \end{aligned} \tag{8}$$

and

$$\mathbf{U}_i = \begin{pmatrix} \mathbf{w}_i^T \Sigma_1 \Sigma_{\mathbf{y}, \varepsilon_i} \Sigma_1^T \mathbf{w}_i & \mathbf{w}_i^T \Sigma_1 \Sigma_{\mathbf{y}, \varepsilon_i} \Sigma_0 \mathbf{e}_i & \mathbf{w}_i^T \Sigma_1 \Sigma_{\mathbf{y}, \varepsilon_i} \Sigma_0 \mathbf{w}_i \\ \mathbf{w}_i^T \Sigma_1 \Sigma_{\mathbf{y}, \varepsilon_i} \Sigma_0 \mathbf{e}_i & \mathbf{e}_i^T \Sigma_0 \Sigma_{\mathbf{y}, \varepsilon_i} \Sigma_0 \mathbf{e}_i & \mathbf{e}_i^T \Sigma_0 \Sigma_{\mathbf{y}, \varepsilon_i} \Sigma_0 \mathbf{w}_i \\ \mathbf{w}_i^T \Sigma_1 \Sigma_{\mathbf{y}, \varepsilon_i} \Sigma_0 \mathbf{w}_i & \mathbf{e}_i^T \Sigma_0 \Sigma_{\mathbf{y}, \varepsilon_i} \Sigma_0 \mathbf{w}_i & \mathbf{w}_i^T \Sigma_0 \Sigma_{\mathbf{y}, \varepsilon_i} \Sigma_0 \mathbf{w}_i \end{pmatrix}. \tag{9}$$

Theorem 1. Let conditions A1–A3 hold and $p \geq 1$ be fixed. Then as $n \rightarrow \infty$, it holds that

$$\sqrt{n} \left(\begin{pmatrix} \widehat{\lambda}_{0i} \\ \widehat{\lambda}_{1i} \\ \widehat{\lambda}_{2i} \end{pmatrix} - \begin{pmatrix} \lambda_{0i} \\ \lambda_{1i} \\ \lambda_{2i} \end{pmatrix} \right) \xrightarrow{d} N(0, \mathbf{V}_i^{-1} \mathbf{U}_i \mathbf{V}_i^{-1}), \quad i = 1, \dots, p,$$

where \mathbf{V}_i and \mathbf{U}_i are given in (8) and (9).

3.2. Asymptotics with diverging p

When p diverges together with n , \mathbf{U}_i , \mathbf{V}_i in (9) and (8) are no longer constant matrices. Let $\mathbf{U}_i^{-\frac{1}{2}}$ be a matrix such that $(\mathbf{U}_i^{-\frac{1}{2}})^2 = \mathbf{U}_i^{-1}$.

Theorem 2. Let conditions A1–A3 hold.

- (i) As $n \rightarrow \infty$, $p \rightarrow \infty$ and $p = o(\sqrt{n})$,

$$\sqrt{n} \mathbf{U}_i^{-\frac{1}{2}} \mathbf{V}_i \left(\begin{pmatrix} \widehat{\lambda}_{0i} \\ \widehat{\lambda}_{1i} \\ \widehat{\lambda}_{2i} \end{pmatrix} - \begin{pmatrix} \lambda_{0i} \\ \lambda_{1i} \\ \lambda_{2i} \end{pmatrix} \right) \xrightarrow{d} N(0, \mathbf{I}_3), \quad i = 1, \dots, p.$$

- (ii) As $n \rightarrow \infty$, $p \rightarrow \infty$, $\sqrt{n} = O(p)$ and $p = o(n)$,

$$\left\| \begin{pmatrix} \widehat{\lambda}_{0i} \\ \widehat{\lambda}_{1i} \\ \widehat{\lambda}_{2i} \end{pmatrix} - \begin{pmatrix} \lambda_{0i} \\ \lambda_{1i} \\ \lambda_{2i} \end{pmatrix} \right\|_2 = O_p\left(\frac{p}{n}\right), \quad i = 1, \dots, p.$$

Theorem 2 indicates that the standard root- n convergence rate prevails as long as $p = o(\sqrt{n})$. However the convergence rate may be slower when p is of higher orders than \sqrt{n} . **Theorem 2** presents the convergence rates for the L_2 norm of the estimation errors. The rates also hold for the L_1 norm of the errors as well. **Corollary 1** consider the estimation errors over p locations together, for which we have established the result for L_1 norm only.

Corollary 1. Let condition A1 hold, and conditions A2 and A3 hold for all $i = 1, \dots, p$. Then as $n \rightarrow \infty$ and $p \rightarrow \infty$, it holds that

$$\begin{aligned} \frac{1}{p} \sum_{i=1}^p \left\| \begin{pmatrix} \widehat{\lambda}_{0i} \\ \widehat{\lambda}_{1i} \\ \widehat{\lambda}_{2i} \end{pmatrix} - \begin{pmatrix} \lambda_{0i} \\ \lambda_{1i} \\ \lambda_{2i} \end{pmatrix} \right\|_1 \\ = \begin{cases} O_p\left(\frac{1}{\sqrt{n}}\right) & \text{if } \frac{p}{\sqrt{n}} = O(1), \\ O_p\left(\frac{p}{n}\right) & \text{if } \frac{p}{\sqrt{n}} \rightarrow \infty \text{ and } \frac{p}{n} = o(1). \end{cases} \end{aligned}$$

To derive the asymptotic properties of the estimators defined in (5), we introduce some new notation. For $i = 1, \dots, p$, let

$$\begin{aligned} \Sigma_0^i &= \text{Cov}(\mathbf{y}_t, \mathbf{z}_t^i), \quad \Sigma_1^i = \text{Cov}(\mathbf{y}_t, \mathbf{z}_{t-1}^i), \\ \Sigma_{\mathbf{z}^i, \varepsilon_i}(j) &= \text{Cov}(\mathbf{z}_{t-1+j}^i \varepsilon_{i,t+j}, \mathbf{z}_{t-1}^i \varepsilon_{i,t}), \quad j = 0, 1, 2, \dots, \end{aligned}$$

and

$$\Sigma_{\mathbf{z}^i, \varepsilon_i} = \Sigma_{\mathbf{z}^i, \varepsilon_i}(0) + \sum_{j=1}^{\infty} [\Sigma_{\mathbf{z}^i, \varepsilon_i}(j) + \Sigma_{\mathbf{z}^i, \varepsilon_i}^T(j)].$$

Let

$$\mathbf{V}_i^* = \begin{pmatrix} \mathbf{w}_i^T \Sigma_0^i (\Sigma_0^i)^T \mathbf{w}_i & \mathbf{w}_i^T \Sigma_1^i (\Sigma_0^i)^T \mathbf{e}_i & \mathbf{w}_i^T \Sigma_1^i (\Sigma_0^i)^T \mathbf{w}_i \\ \mathbf{w}_i^T \Sigma_1^i (\Sigma_0^i)^T \mathbf{e}_i & \mathbf{e}_i^T \Sigma_0^i (\Sigma_0^i)^T \mathbf{e}_i & \mathbf{e}_i^T \Sigma_0^i (\Sigma_0^i)^T \mathbf{w}_i \\ \mathbf{w}_i^T \Sigma_1^i (\Sigma_0^i)^T \mathbf{w}_i & \mathbf{e}_i^T \Sigma_0^i (\Sigma_0^i)^T \mathbf{w}_i & \mathbf{w}_i^T \Sigma_0^i (\Sigma_0^i)^T \mathbf{w}_i \end{pmatrix}, \tag{10}$$

and the equation given in Box I.

Theorem 3 indicates that the estimators defined in (5) are asymptotically normal with the standard \sqrt{n} -rate as long as $d_i = o(\sqrt{n})$. Note that it does not impose any conditions directly on the size of p .

- A4. (a) For $\gamma > 0$ specified in A2(b),

$$\sup_p E |\mathbf{w}_i^T \Sigma_0^i \mathbf{z}_t^i|^{4+\gamma} < \infty, \quad \sup_p E |\mathbf{w}_i^T \Sigma_1^i \mathbf{z}_t^i|^{4+\gamma} < \infty,$$

$$\sup_p E |\mathbf{e}_i^T \Sigma_0^i \mathbf{z}_t^i|^{4+\gamma} < \infty,$$

$$\sup_p E |\mathbf{w}_i^T \mathbf{y}_t|^{4+\gamma} < \infty, \quad \sup_p E |\mathbf{e}_i^T \mathbf{y}_t|^{4+\gamma} < \infty$$

and the diagonal elements of \mathbf{V}_i^* defined in (10) are bounded uniformly in p .

- (b) The rank of matrix $E\{\widehat{\mathbf{Z}}_i\}$ is equal to 3, where $\widehat{\mathbf{Z}}_i$ is defined in (6).

Theorem 3. Let conditions A1, A2(a, b) and A4 hold. As $n \rightarrow \infty$, $p \rightarrow \infty$ and $d_i = o(\sqrt{n})$, it holds that

$$\sqrt{n} (\mathbf{U}_i^*)^{-\frac{1}{2}} \mathbf{V}_i^* \left(\begin{pmatrix} \widehat{\lambda}_{0i} \\ \widehat{\lambda}_{1i} \\ \widehat{\lambda}_{2i} \end{pmatrix} - \begin{pmatrix} \lambda_{0i} \\ \lambda_{1i} \\ \lambda_{2i} \end{pmatrix} \right) \xrightarrow{d} N(0, \mathbf{I}_3), \quad i = 1, \dots, p,$$

where \mathbf{V}_i^* and \mathbf{U}_i^* are given in (10) and (11).

$$\mathbf{U}_i^* = \begin{pmatrix} \mathbf{w}_i^T \Sigma_1^i \Sigma_{z^i, \varepsilon_i} (\Sigma_1^i)^T \mathbf{w}_i & \mathbf{w}_i^T \Sigma_1^i \Sigma_{z^i, \varepsilon_i} (\Sigma_0^i)^T \mathbf{e}_i & \mathbf{w}_i^T \Sigma_1^i \Sigma_{z^i, \varepsilon_i} (\Sigma_0^i)^T \mathbf{w}_i \\ \mathbf{w}_i^T \Sigma_1^i \Sigma_{z^i, \varepsilon_i} (\Sigma_0^i)^T \mathbf{e}_i & \mathbf{e}_i^T \Sigma_0^i \Sigma_{z^i, \varepsilon_i} (\Sigma_0^i)^T \mathbf{e}_i & \mathbf{e}_i^T \Sigma_0^i \Sigma_{z^i, \varepsilon_i} (\Sigma_0^i)^T \mathbf{w}_i \\ \mathbf{w}_i^T \Sigma_1^i \Sigma_{z^i, \varepsilon_i} (\Sigma_0^i)^T \mathbf{w}_i & \mathbf{e}_i^T \Sigma_0^i \Sigma_{z^i, \varepsilon_i} (\Sigma_0^i)^T \mathbf{w}_i & \mathbf{w}_i^T \Sigma_1^i \Sigma_{z^i, \varepsilon_i} (\Sigma_0^i)^T \mathbf{w}_i \end{pmatrix}. \tag{11}$$

Box I.

The key assumption of Theorem 2 is A2(c), which decides the fact that the effect of the dimensionality p only comes from E_1 in Eq. (13) in the Appendix. We can relax this assumption by allowing E_2 to be affected by p as well. Under the new relaxed assumption, we may obtain a better convergent rate of estimator (3) by making use of the fact that (3) is invariant if we divide both the numerator and denominator by the same number, for example, a number relating to p . This will be presented in Theorem 4. We propose the new relaxed assumption:

A5. For $\gamma > 0$ specified in A2(b),

$$\begin{aligned} & \max_p \left\{ \sup E |\mathbf{w}_i^T \Sigma_0 \mathbf{y}_t|^{4+\gamma}, \sup E |\mathbf{w}_i^T \Sigma_1 \mathbf{y}_t|^{4+\gamma}, \right. \\ & \left. \sup E |\mathbf{e}_i^T \Sigma_0 \mathbf{y}_t|^{4+\gamma} \right\} = O(s_0(p)), \\ & \max_p \left\{ \sup E |\mathbf{w}_i^T \mathbf{y}_t|^{4+\gamma}, \sup E |\mathbf{e}_i^T \mathbf{y}_t|^{4+\gamma} \right\} = O(s_1(p)) \end{aligned}$$

and the diagonal elements of \mathbf{V}_i defined in (8) is in the order of $s_2(p)$, where $s_0(p)$, $s_1(p)$ and $s_2(p)$ are numbers relating to p .

Denote C as a constant. When the number of nonzero elements (or elements bounded away from zero) in \mathbf{w}_i increases with p but is $o(p)$, we may have $s_1(p) = o(\min\{s_0(p), s_2(p)\})$. Simulation scenario 2 is under this case. When there are only finite number of nonzero elements (or elements bounded away from zero) in \mathbf{w}_i , we might have $s_1(p) \asymp C$, which is the case of simulation scenario 1. The reason we assume the diagonal elements of \mathbf{V}_i defined in (8) are in the order of $s_2(p)$ is because we can treat $\mathbf{w}_i^T \Sigma_1 \Sigma_1^T \mathbf{w}_i$, $\mathbf{e}_i^T \Sigma_0 \Sigma_0 \mathbf{e}_i$, $\mathbf{w}_i^T \Sigma_0 \Sigma_0 \mathbf{w}_i$ as the second moments of three random variables $\mathbf{w}_i^T \Sigma_1 \mathbf{x}$, $\mathbf{e}_i^T \Sigma_0 \mathbf{x}$ and $\mathbf{w}_i^T \Sigma_0 \mathbf{x}$ respectively, where the $p \times 1$ random vector \mathbf{x} has mean 0 and covariance matrix \mathbf{I}_p .

Theorem 4. Let conditions A1, A2(a, b), A3 and A5 hold. As $n \rightarrow \infty$, $p \rightarrow \infty$, if $\frac{ps_1(p)}{s_2(p)} = o(n)$ and $s_0^{1/2}(p) = O(ps_1^{1/2}(p)s_2(p))$, it holds that

$$\left\| \begin{pmatrix} \hat{\lambda}_{0i} \\ \hat{\lambda}_{1i} \\ \hat{\lambda}_{2i} \end{pmatrix} - \begin{pmatrix} \lambda_{0i} \\ \lambda_{1i} \\ \lambda_{2i} \end{pmatrix} \right\|_2 = O_p \left(\max \left\{ \frac{ps_1^{3/4}(p)}{ns_2(p)}, \frac{s_0^{1/4}(p)}{\sqrt{ns_2(p)}} \right\} \right).$$

Let us consider some examples. (1) When $s_0(p) \asymp p$, $s_1(p) \asymp C$ and $s_2(p) \asymp p$, the convergence rate is $\max\left\{\frac{1}{n}, \frac{1}{\sqrt{np^{3/4}}}\right\}$. (2) When $s_0(p) \asymp p$, $s_1(p) \asymp \sqrt{p}$ and $s_2(p) \asymp p$, if $p = o(n^2)$, the convergence rate is $\max\left\{\frac{p^{3/8}}{n}, \frac{1}{\sqrt{np^{3/4}}}\right\}$. (3) When $s_0(p) \asymp C$, $s_1(p) \asymp C$ and $s_2(p) \asymp C$, if $p = o(n)$, the convergence rate is $\max\left\{\frac{p}{n}, \frac{1}{\sqrt{n}}\right\}$, which corresponds with Theorem 2. Theorem 4 indicates that under different situations of $s_0(p)$, $s_1(p)$ and $s_2(p)$, we may obtain different convergence rates. These observations are illustrated by simulation examples in Section 4.

4. Simulation study

To examine the finite sample performance of the proposed estimation methods, we conduct some simulation under different scenarios.

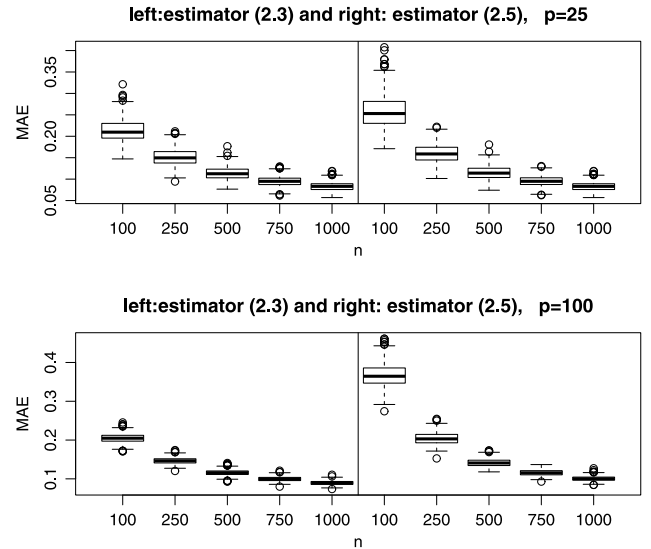


Fig. 2. Boxplots of MAE for estimator (2.3) (left panels) and estimator (2.5) (right panels) with $p = 25$ (top panels) and 100 (bottom panels), $n = 100, 250, 500, 750, 1000$ for scenario 1.

4.1. Scenario 1

λ_{0i} , λ_{1i} and λ_{2i} are generated from $U(-0.6, 0.6)$. The spatial weight matrix \mathbf{W} used is a block diagonal matrix formed by a $\sqrt{p} \times \sqrt{p}$ row-normalized matrix \mathbf{W}^* . We construct \mathbf{W}^* such that the first four sub-diagonal elements are all 1 and the rest elements are all 0 before normalizing. This kind of \mathbf{W} corresponds to the pooling of \sqrt{p} separate districts with similar neighboring structures in each district, see Lee and Yu (2013). The error $\varepsilon_{i,t}$ are independently generated from $N(0, \sigma_i^2)$, where we generate each σ_i from $U(0.5, 1.5)$.

For all scenarios, we generate data from (2.1) with different settings for n and p . We apply the proposed estimation method (2.3) and (2.5) (with $d_i = \min(p, n^{10/21})$) and report the mean absolute errors:

$$MAE(i) = \frac{1}{3} \sum_{j=0}^2 |\hat{\lambda}_{ji} - \lambda_{ji}|, \quad MAE = \frac{1}{p} \sum_{i=1}^p MAE(i).$$

We replicate each setting 500 times.

Fig. 2 depicts two boxplots of MAE with p equal to, respectively, 25 and 100. As the sample size n increases from 100, 250, 500, 750 to 1000, MAE decreases for both methods.

Fig. 3 depicts the boxplots of the MAE for the original estimator (2.3), the root n consistent estimator (2.5), and the estimator (2.5) with the ridge penalty, where we choose the ridge tuning parameter to be $C \times \frac{p}{n}$ in order to avoid the nearly singularity problem of $\hat{\mathbf{Z}}_i^T \hat{\mathbf{Z}}_i$, and C is chosen via cross validation. With $n = 500$, the dimension p is set at 25, 49, 64, 81, 100, 169, 324 and 529 respectively. The MAE for (2.3) remains about the same level as p increases; see the panel on the left in Fig. 3. This is in line with the asymptotic result of Theorem 4 when, for example, $s_1(p) \asymp C$, $s_0(p) \asymp p$ and $s_2(p) \asymp p$. In contrast, the MAE for estimator (2.5) increases sharply when p increases; see the panel in the middle. This is due to the fact that $\hat{\mathbf{Z}}_i^T \hat{\mathbf{Z}}_i$ is nearly singular for large p . Adding a ridge in the estimator certainly mitigates the deterioration when p increases; see the panel on the right in Fig. 3.

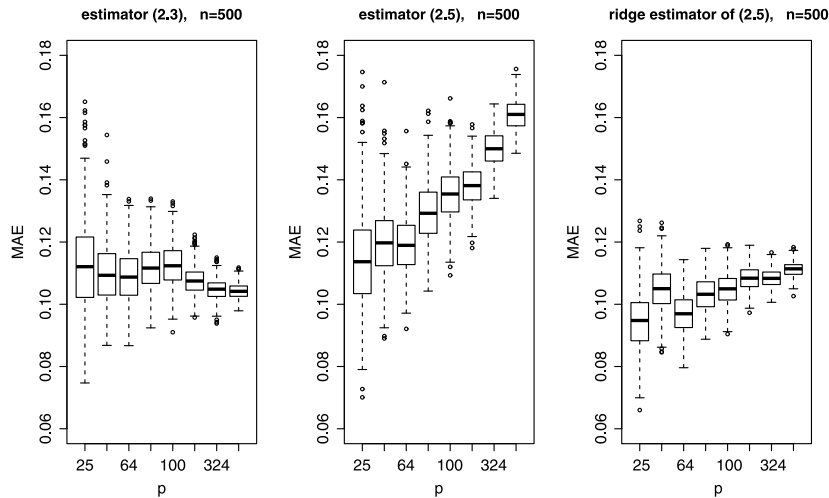


Fig. 3. Boxplots of MAE of the original estimator (2.3) (the left panel), the root n consistent estimator (2.5) (the middle panel), and the estimator (2.5) after adding ridge penalty (the right panel) with $n = 500$ and $p = 25, 49, 64, 81, 100, 169, 324, 529$ for scenario 1.

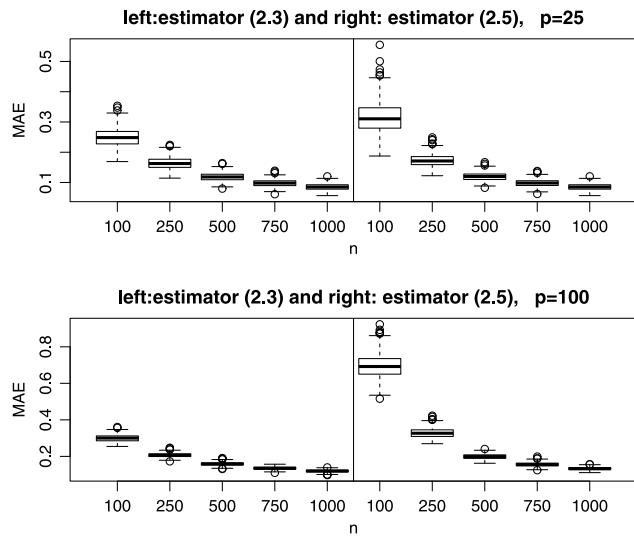


Fig. 4. Boxplots of MAE for estimator (2.3) (left panels) and estimator (2.5) (right panels) with $p = 25$ (top panels) and 100 (bottom panels), $n = 100, 250, 500, 750, 1000$ for scenario 2.

4.2. Scenario 2

$\lambda_{0i}, \lambda_{1i}$ and λ_{2i} are generated from $U(-0.6, 0.6)$. The spatial weight matrix \mathbf{W} is constructed as follows. First, we construct a $\sqrt{p} \times \sqrt{p}$ row-normalized matrix \mathbf{W}^* , where \mathbf{W}^* is chosen such that the first two sub-diagonal elements are all 1 and the rest elements are all 0 before normalizing. Then we treat \mathbf{W} as a $\sqrt{p} \times \sqrt{p}$ block matrix and put \mathbf{W}^* into the main diagonal, 2nd, 4th, 6th and etc. sub-diagonal block positions. This kind of \mathbf{W} corresponds to the pooling of \sqrt{p} districts (each district has \sqrt{p} locations) which the evenly numbered districts are connected and the oddly numbered districts are separated. Each district has similar neighboring structures. As p increases, the number of the locations influencing one specific location increases in the order of \sqrt{p} . The error $\varepsilon_{i,t}$ are independently generated from $N(0, \sigma_i^2)$, where we generate each σ_i from $U(0.5, 1.5)$.

Fig. 4 depicts two boxplots of MAE with p equal to, respectively, 25 and 100. As the sample size n increases from 100, 250, 500, 750 to 1000, MAE decreases for both methods.

Fig. 5 depicts three boxplots as Fig. 3. The MAE for (2.3) increases steadily as p increases, which matches the result of Theorem 4

when, for instance, $s_1(p) \asymp \sqrt{p}$, $s_0(p) \asymp p$ and $s_2(p) \asymp p$. The MAE for (2.5) after adding ridge penalty is slowly increasing as well. This might be caused by the fact that, similar to A2(c), quantities in condition A4(a) are also influenced by p since the number of nonzero elements in \mathbf{w}_i is in the order of \sqrt{p} .

5. Real data analysis

5.1. European consumer price indices

We analyze the monthly change rates of the consumer price index (CPI) for the EU member states, over the years 2003–2010. We use the national harmonized index of consumer prices calculated by Eurostat, the statistical office of the European Union. For this data set, $n = 96$ and $p = 31$.

Fig. 6 presents the time series plots of the monthly change rates of CPI for the 31 states. To line up the curves together, each series is centered at its mean value in Fig. 6. There exist clearly synchronizes on the fluctuations across different states, indicating the spatial (i.e. cross-state) correlations among different states. Also noticeable is the varying degrees of the fluctuation over the different states.

Let \mathbf{y}_t consist of the monthly change rates of CPI for the 31 states. We fit the proposed spatial–temporal model (1) to this data set with the parameters estimated by (3). We take a normalized sample correlation matrix of \mathbf{y}_t as the spatial weight matrix $\mathbf{W} = (w_{ij})$, i.e. we let w_{ij} be the absolute value of the sample correlation between the i th and j th states for $i \neq j$, and $w_{ii} = 0$, and then replace w_{ij} by $w_{ij} / \sum_k w_{kj}$.

Fig. 7 presents the scatter plots of $y_{i,t}$ against, respectively, the 3 regressors in model (1), i.e. $\mathbf{w}_i^T \mathbf{y}_t, y_{i,t-1}, \mathbf{w}_i^T \mathbf{y}_{t-1}$, for four selected states Belgium, Greece, France and Iceland. We superimpose the straight line $y = \hat{\lambda}_{ji} x$ in each of those 3 scatter plots with, respectively, $j = 0, 1, 2$. It is clear that the estimated slopes are very different for those 4 states. Fig. 8 plots the true monthly change rates of the CPI for those 4 states together with the fitted values

$$\hat{y}_{i,t} = \hat{\lambda}_{0i} \mathbf{w}_i^T \mathbf{y}_t + \hat{\lambda}_{1i} y_{i,t-1} + \hat{\lambda}_{2i} \mathbf{w}_i^T \mathbf{y}_{t-1}. \tag{12}$$

Overall $\hat{y}_{i,t}$ tracks its truth value reasonably well. Fig. 9 shows the out-of-sample forecasting performance of our model. For the sake of comparison, predictions are made using our model and the proposed generalized Yule–Walker estimator, and using the (constant) SDPD model of Yu et al. (2008) and their Quasi-Maximum Likelihood estimator. In particular, for each location,

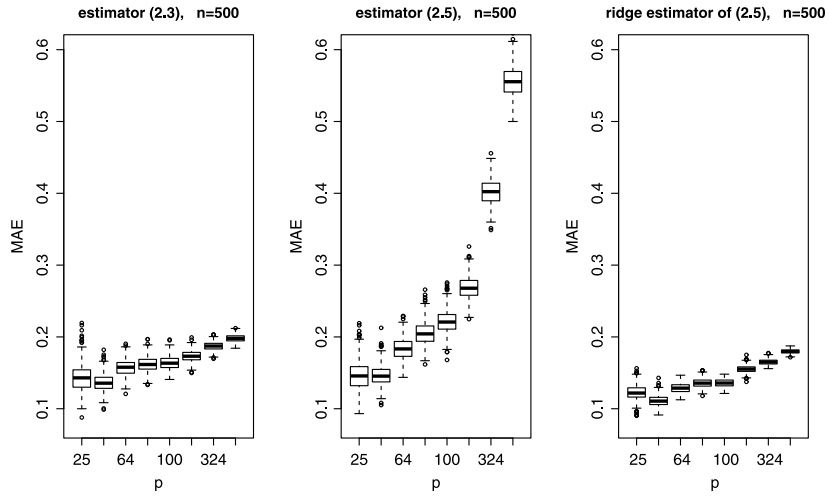


Fig. 5. Boxplots of MAE of the original estimator (2.3) (the left panel), the root n consistent estimator (2.5) (the middle panel), and the estimator (2.5) after adding ridge penalty (the right panel) with $n = 500$ and $p = 25, 49, 64, 81, 100, 169, 324, 529$ for scenario 2.

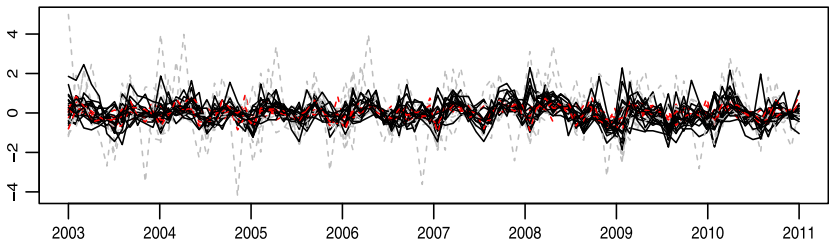


Fig. 6. Time series plots of the monthly change rates of CPI for the 31 EU member states. Each series is subtracted by its mean value.

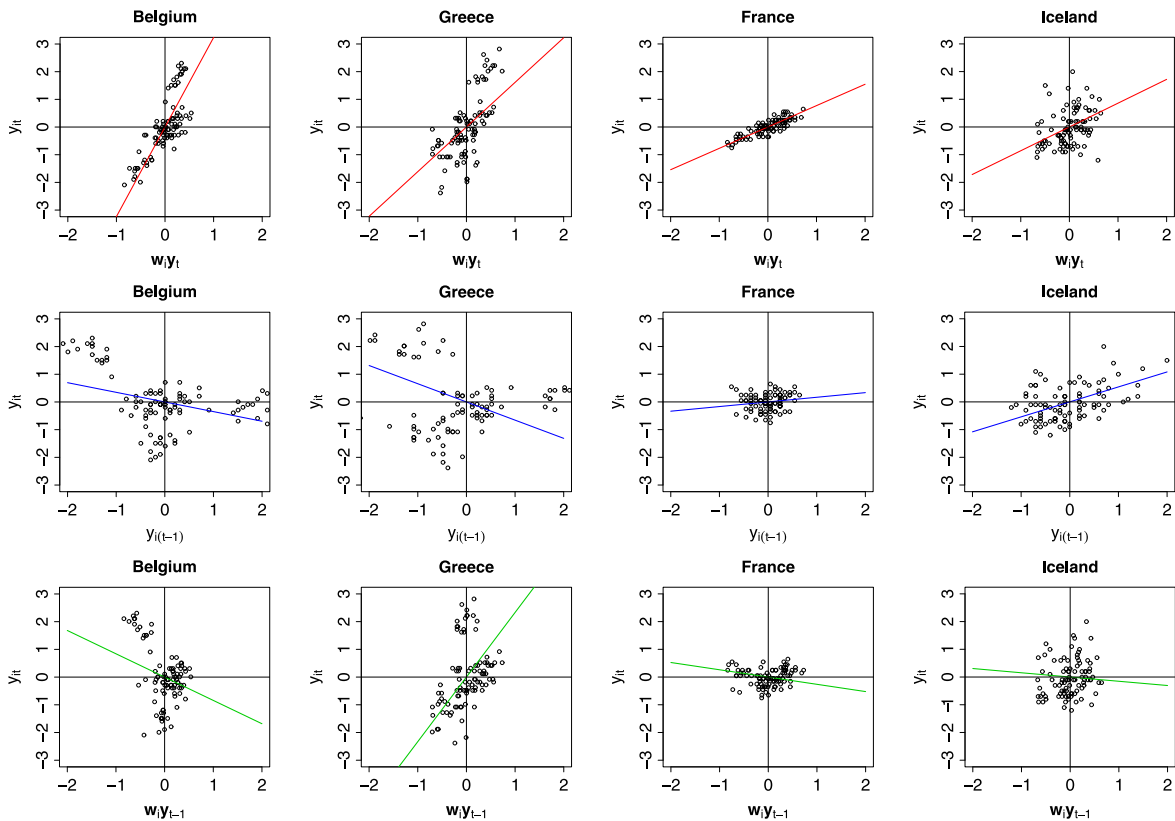


Fig. 7. The scatter plots of $y_{i,t}$ against $w_j^T y_t$ (panels on the top), $y_{i,t-1}$ (panels in the middle), and $w_j^T y_{t-1}$ (panels on the bottom) for four selected countries Belgium, Greece, France and Iceland. The straight lines $y = \lambda_{ji} x$ are superimposed in the panels on the top with $j = 0$, those in the middle with $j = 1$, and those on the bottom with $j = 2$.

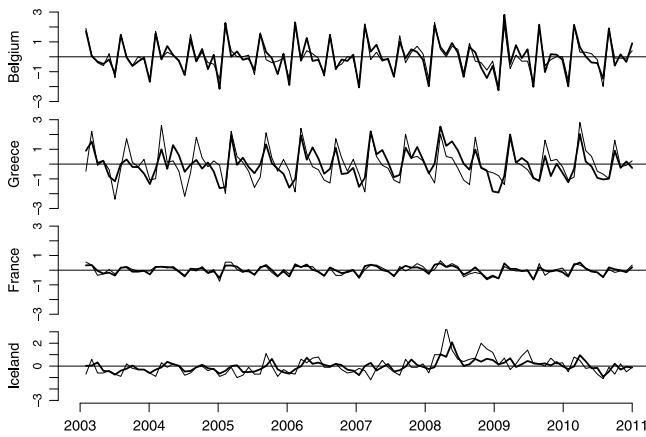


Fig. 8. The monthly change rates of CPI (thin lines) of Belgium, Greece, France and Iceland, and their estimated values (thick lines) by model (1).

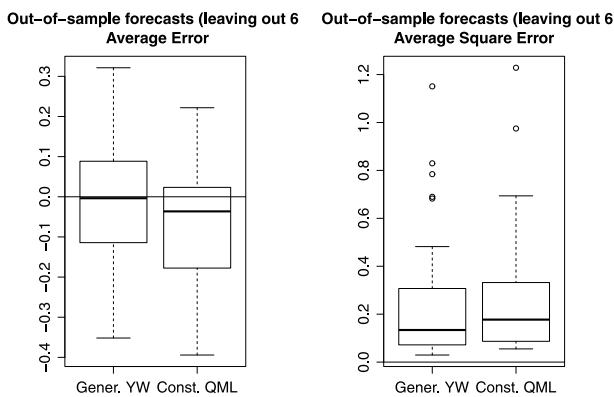


Fig. 9. Prediction errors generated in the out-of-sample forecasting, leaving out 6 observations from the sample, using our model with the Generalized Yule–Walker estimator and using the constant SDPD model of Yu et al. (2008) with the Quasi-Maximum Likelihood estimator.

we leave out from the sample the last six observations and we compute the (out-of-sample) forecasts with 1, 2, . . . , 6 step ahead forecasting horizon; then, we compute the average prediction error over time (i.e. the mean of the 6 prediction errors). On the left panel of Fig. 9, the two box-plots summarize the average prediction error for the 31 locations obtained with our YW estimator and the QML estimator of Yu et al. (2008), respectively. It is evident that our estimator produces unbiased predictions while the QML estimator appears to be biased. This advantage also reflects on the forecasting average square errors, reported on the right panel of Fig. 9. In conclusion, the SDPD model of Yu et al. (2008) has a satisfying forecasting performance because several locations have similar spatial structure and for those locations a model with constant parameters is sufficient. Anyway, a marginal improvement is observed for our estimator because several locations have quite different structures and our model is able to capture this difference. Finally, it is worthwhile to notice that the variability of the two predictors appears to be the same.

To further vindicate the necessity to use different coefficients for different states, we consider a statistical test for hypothesis

$$H_0 : \lambda_{j1} = \dots = \lambda_{jp}, \quad j = 0, 1, 2$$

for model (1). Then the residuals resulting from the fitted model under H_0 will be greater than the residuals without H_0 . However if H_0 is true, the difference between the two sets of residuals should not be significant. We apply a bootstrap method to test this significance. Let $\tilde{\lambda}_0, \tilde{\lambda}_1, \tilde{\lambda}_2$ be the estimates under hypothesis H_0 .

Define the test statistic

$$U = \frac{1}{n} \sum_{t=1}^n \|\mathbf{y}_t - \tilde{\mathbf{y}}_t\|_1, \quad \tilde{\mathbf{y}}_t = \tilde{\lambda}_0 \mathbf{W}\mathbf{y}_t + \tilde{\lambda}_1 \mathbf{y}_{t-1} + \tilde{\lambda}_2 \mathbf{W}\mathbf{y}_{t-1}.$$

We reject H_0 for large values of U . To assess how large is large, we generate a bootstrap data from

$$\mathbf{y}_t^* = \tilde{\lambda}_0 \mathbf{W}\mathbf{y}_t + \tilde{\lambda}_1 \mathbf{y}_{t-1} + \tilde{\lambda}_2 \mathbf{W}\mathbf{y}_{t-1} + \mathbf{e}_t^*,$$

where $\{\mathbf{e}_t^*\}$ are drawn independently from the residuals

$$\hat{\mathbf{e}}_t = \mathbf{y}_t - \hat{\mathbf{y}}_t, \quad t = 1, \dots, n,$$

and $\hat{\mathbf{y}}_t$ consists of the components defined in (12). Now the bootstrap statistic is defined as

$$U^* = \frac{1}{n} \sum_{t=1}^n \|\mathbf{y}_t^* - (\lambda_0^* \mathbf{W}\mathbf{y}_t + \lambda_1^* \mathbf{y}_{t-1} + \lambda_2^* \mathbf{W}\mathbf{y}_{t-1})\|_1,$$

where $(\lambda_0^*, \lambda_1^*, \lambda_2^*)$ are the estimated coefficients for the regression model

$$\mathbf{y}_t^* = \lambda_0 \mathbf{W}\mathbf{y}_t + \lambda_1 \mathbf{y}_{t-1} + \lambda_2 \mathbf{W}\mathbf{y}_{t-1} + \mathbf{e}_t, \quad t = 1, \dots, n.$$

The P -value for testing hypothesis H_0 is defined as

$$P(U^* > U | \mathbf{y}_1, \dots, \mathbf{y}_n),$$

which is approximated by the relative frequency of the event $(U^* > U)$ in a repeated bootstrap sampling with a large number of replications. By repeating bootstrap sampling 1000 times, the estimated P -value is 0, exhibiting strong evidence against the null hypothesis H_0 . Therefore the model with the equal slope parameters across different locations is inadequate for this particular data set.

5.2. Modeling mortality rates

Now we analyze the annual Italian male and female mortality rates for different ages (between 0 and 104) in the period of 1950–2009 based on the proposed model (1). The data were downloaded from the Human Mortality Database (see the website <http://www.mortality.org/>). Let $m_{i,t}$ be the log mortality rate of female or male at age i and in Year t . Those data are plotted in Fig. 10. Two panels on the left plot are the female and male mortality against different age in each year. More precisely the curves $\{m_{i,t}, i = 1, \dots, 21\}$ for $t < 1970$ are plotted in red, those for $t > 1990$ are in blue, those with $1970 \leq t \leq 1989$ are in gray. Those curves show clearly that the mortality rate decreases over the years for almost all age groups (except a few outliers at the top end). Two panels in the middle of Fig. 10 plot the log mortality for each age group against time with the following color code: black for ages not great than 10, gray for ages between 11 and 100, and green for ages greater than 100. They indicate that the mortality for all age groups decreases over time, the most significant decreases occur at the young age groups. Furthermore, the fluctuation of the mortality rates for the top age groups reduces significantly over the years, while the mean mortality rates for those groups remain about the same. This can be seen more clearly in the two panels on the right which plot differenced log mortality rates $\{y_{i,t}, t = 1951, \dots, 2009\}$, using the same color code, where $y_{i,t} = m_{i,t} - m_{i,t-1}$.

We fit the differenced log mortality data with model (1) with the parameters estimated by (5) and $d_i = 20$. Note that now $p = 104$ and $n = 59$. Let the off-diagonal elements of the spatial weight matrix \mathbf{W} be

$$w_{ij} = \frac{1}{1 + |i - j|}, \quad 1 \leq i < j \leq 104.$$

We then replace w_{ij} by $w_{ij} / \sum_i w_{ij}$. Moreover, we can also fix a threshold τ and set to zero all the elements of matrix \mathbf{W} such that $|x - w| > \tau$ (for simplicity, we fix $\tau = 5$ in this application, but the results are substantially invariant for different values of τ).

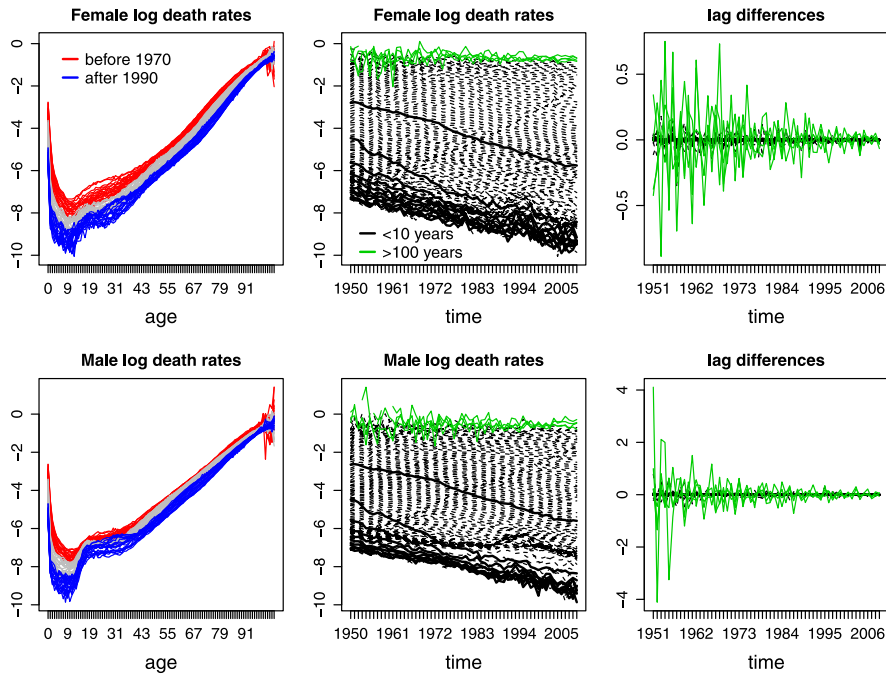


Fig. 10. Log mortality rates of Italian female (3 top panels) and male (3 bottom panels) are plotted against age from each year in 1950–2009 (2 left panels), against year for each age group between 0 and 104 (2 middle panels). Differenced log mortality rates are plotted against year for each age in 2 right panels.

Table 1

Estimated coefficients for a selection of cohorts of different ages. The left column is the estimated pure spatial coefficients $\hat{\lambda}_{0i}$; The middle column is the estimated pure dynamic coefficient $\hat{\lambda}_{1i}$; The right column is the estimated spatial-dynamic coefficients $\hat{\lambda}_{2i}$.

Age	$\hat{\lambda}_{0i}$	$\hat{\lambda}_{1i}$	$\hat{\lambda}_{2i}$	Age	$\hat{\lambda}_{0i}$	$\hat{\lambda}_{1i}$	$\hat{\lambda}_{2i}$
5	0.41	-0.52	0.06	55	0.19	-0.88	0.28
10	0.20	-0.42	0.05	60	-0.09	-0.72	0.01
15	0.44	-0.65	0.18	65	0.22	-0.63	0.21
20	0.64	-0.78	0.40	70	0.21	-0.69	0.08
25	-0.04	-0.43	0.03	75	0.33	-0.59	0.22
30	0.78	-0.80	0.55	80	0.33	-0.89	0.27
35	0.11	-0.55	0.29	85	0.37	-0.76	0.18
40	-0.04	-0.66	-0.01	90	0.29	-0.62	0.16
45	0.29	-0.46	0.12	95	0.27	-0.77	0.26
50	-0.10	-0.45	-0.05	100	0.44	-0.69	-0.03

6. Final remark

We propose in this paper a generalized Yule–Walker estimation method for spatio-temporal models with diagonal coefficients. The setting enlarges the capacity of the popular spatial dynamic panel data models. Both the asymptotic results and numerical illustration show that the proposed estimation method works well, although the number of the estimation equations utilized should be of the order $o(\sqrt{n})$.

Acknowledgments

Maria Lucia Parrella was partially supported by the Italian Ministry of Education, University and Research (MIUR), PRIN Research Project 2010–2011—prot. 2010J3LZEN, “Forecasting economic and financial time series: understanding the complexity and modelling structural change”. Qiwei Yao was partially supported by an EPSRC research grant (grant number: EP/L01226X/1).

Appendix. Proofs

We present the proofs for [Theorem 2](#), [Corollary 1](#) and [Theorem 4](#) in this appendix. The proofs for [Theorems 1](#) and [3](#) are similar and simpler than that of [Theorem 2](#), and they are therefore omitted. We also present a lemma (i.e. [Lemma 1](#)) at the end of this appendix, which shows that condition A2 is implied by conditions A1 and B1–B3; see [Remark 1](#). We use C to denote a generic positive constant, which may be different at different places.

Proof of Theorem 2. We first prove (i) of [Theorem 2](#). We only need to prove the assertions (1) and (2) below, as then the required conclusion follows from (1) and (2) immediately.

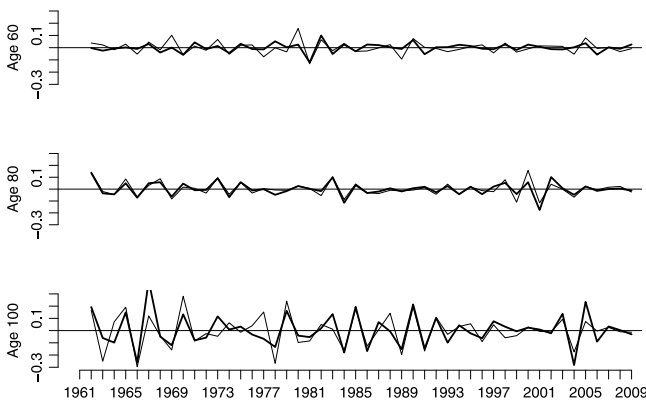


Fig. 11. Observed time series (thin line) and fitted time series (bold line), for female mortality rate for ages $i = 60, 80, 100$.

The results of the estimation are shown in [Table 1](#), for a selection of cohorts of different ages. [Fig. 11](#) shows the fitted series for ages $i = 60, 80, 100$.

(1)

$$\sqrt{n}\mathbf{U}_i^{-\frac{1}{2}} \begin{pmatrix} \frac{1}{n} \sum_{t=1}^n \mathbf{y}_{t-1}^T (\mathbf{w}_i^T \mathbf{y}_t) \frac{1}{n} \sum_{t=1}^n \varepsilon_{i,t} \mathbf{y}_{t-1} \\ \frac{1}{n} \sum_{t=1}^n \mathbf{y}_{t-1}^T \mathbf{y}_{i,t-1} \frac{1}{n} \sum_{t=1}^n \varepsilon_{i,t} \mathbf{y}_{t-1} \\ \frac{1}{n} \sum_{t=1}^n \mathbf{y}_{t-1}^T (\mathbf{w}_i^T \mathbf{y}_{t-1}) \frac{1}{n} \sum_{t=1}^n \varepsilon_{i,t} \mathbf{y}_{t-1} \end{pmatrix} \xrightarrow{d} N(0, \mathbf{I}_3).$$

(2) $\mathbf{V}_i(\widehat{\mathbf{X}}_i^T \widehat{\mathbf{X}}_i)^{-1} \xrightarrow{p} \mathbf{I}_3.$

To prove (1), it suffices to show that for any nonzero vector $\mathbf{a} = (a_1, a_2, a_3)^T$, the linear combination

$$\mathbf{a}^T \begin{pmatrix} \frac{1}{n} \sum_{t=1}^n \mathbf{y}_{t-1}^T (\mathbf{w}_i^T \mathbf{y}_t) \frac{1}{n} \sum_{t=1}^n \varepsilon_{i,t} \mathbf{y}_{t-1} \\ \frac{1}{n} \sum_{t=1}^n \mathbf{y}_{t-1}^T \mathbf{y}_{i,t-1} \frac{1}{n} \sum_{t=1}^n \varepsilon_{i,t} \mathbf{y}_{t-1} \\ \frac{1}{n} \sum_{t=1}^n \mathbf{y}_{t-1}^T (\mathbf{w}_i^T \mathbf{y}_{t-1}) \frac{1}{n} \sum_{t=1}^n \varepsilon_{i,t} \mathbf{y}_{t-1} \end{pmatrix}$$

is asymptotic normal.

Let us take out the dominant term in $\frac{1}{n} \sum_{t=1}^n \mathbf{y}_{t-1}^T (\mathbf{w}_i^T \mathbf{y}_t) \frac{1}{n} \sum_{t=1}^n \varepsilon_{i,t} \mathbf{y}_{t-1}$ first.

$$\begin{aligned} & \frac{1}{n} \sum_{t=1}^n \mathbf{y}_{t-1}^T (\mathbf{w}_i^T \mathbf{y}_t) \frac{1}{n} \sum_{t=1}^n \varepsilon_{i,t} \mathbf{y}_{t-1} \\ &= \left[\frac{1}{n} \sum_{t=1}^n \mathbf{y}_{t-1}^T (\mathbf{w}_i^T \mathbf{y}_t) - E[\mathbf{y}_{t-1}^T (\mathbf{w}_i^T \mathbf{y}_t)] \right] \frac{1}{n} \sum_{t=1}^n \varepsilon_{i,t} \mathbf{y}_{t-1} \\ & \quad + E[\mathbf{y}_{t-1}^T (\mathbf{w}_i^T \mathbf{y}_t)] \frac{1}{n} \sum_{t=1}^n \varepsilon_{i,t} \mathbf{y}_{t-1} \\ &= \left[\frac{1}{n} \sum_{t=1}^n \mathbf{y}_{t-1}^T (\mathbf{w}_i^T \mathbf{y}_t) - \mathbf{w}_i^T \boldsymbol{\Sigma}_1 \right] \frac{1}{n} \sum_{t=1}^n \varepsilon_{i,t} \mathbf{y}_{t-1} \\ & \quad + \frac{1}{n} \sum_{t=1}^n \mathbf{w}_i^T \boldsymbol{\Sigma}_1 \mathbf{y}_{t-1} \varepsilon_{i,t} \\ &= E_1 + E_2. \end{aligned} \tag{13}$$

For term E_1 and $k = 1, 2, \dots, p$, by Proposition 2.5 of Fan and Yao (2003), we have

$$\begin{aligned} & E \left[\frac{1}{n} \sum_{t=1}^n (\mathbf{e}_k^T \mathbf{y}_{t-1} \mathbf{w}_i^T \mathbf{y}_t - \mathbf{e}_k^T \boldsymbol{\Sigma}_1^T \mathbf{w}_i) \right]^2 \\ &= \frac{1}{n^2} \sum_{t=1}^n \text{Var}(\mathbf{e}_k^T \mathbf{y}_{t-1} \mathbf{w}_i^T \mathbf{y}_t) \\ & \quad + \frac{1}{n^2} \sum_{t \neq s} \text{Cov}(\mathbf{e}_k^T \mathbf{y}_{t-1} \mathbf{w}_i^T \mathbf{y}_t, \mathbf{e}_k^T \mathbf{y}_{s-1} \mathbf{w}_i^T \mathbf{y}_s) \\ &\leq \frac{C}{n} + \frac{1}{n^2} \sum_{t \neq s} 8\alpha(|t-s|)^{\frac{\gamma}{4+\gamma}} \left[E|\mathbf{e}_k^T \mathbf{y}_{t-1} \mathbf{w}_i^T \mathbf{y}_t|^{2+\frac{\gamma}{2}} \right]^{\frac{2}{4+\gamma}} \\ & \quad \times \left[E|\mathbf{e}_k^T \mathbf{y}_{s-1} \mathbf{w}_i^T \mathbf{y}_s|^{2+\frac{\gamma}{2}} \right]^{\frac{2}{4+\gamma}} \\ &\leq \frac{C}{n} + \frac{C}{n^2} \sum_{t \neq s} \alpha(|t-s|)^{\frac{\gamma}{4+\gamma}} \leq \frac{C}{n} + \frac{C}{n} \sum_{j=1}^n \alpha(j)^{\frac{\gamma}{4+\gamma}} \\ &= o\left(\frac{1}{n}\right), \end{aligned} \tag{14}$$

where C is independent of p . Then it holds that

$$\frac{1}{n} \sum_{t=1}^n (\mathbf{e}_k^T \mathbf{y}_{t-1} \mathbf{w}_i^T \mathbf{y}_t - \mathbf{e}_k^T \boldsymbol{\Sigma}_1^T \mathbf{w}_i) = o_p\left(\frac{1}{\sqrt{n}}\right).$$

Therefore

$$\begin{aligned} & \left\| \frac{1}{n} \sum_{t=1}^n \mathbf{y}_{t-1} \mathbf{w}_i^T \mathbf{y}_t - \boldsymbol{\Sigma}_1^T \mathbf{w}_i \right\|_2 \\ &= \sqrt{\sum_{k=1}^p \left[\frac{1}{n} \sum_{t=1}^n (\mathbf{e}_k^T \mathbf{y}_{t-1} \mathbf{w}_i^T \mathbf{y}_t - \mathbf{e}_k^T \boldsymbol{\Sigma}_1^T \mathbf{w}_i) \right]^2} = o_p\left(\sqrt{\frac{p}{n}}\right). \end{aligned}$$

Similarly,

$$\left\| \frac{1}{n} \sum_{t=1}^n \varepsilon_{i,t} \mathbf{y}_{t-1} \right\|_2 = o_p\left(\sqrt{\frac{p}{n}}\right).$$

Since $E_1 \leq \left\| \frac{1}{n} \sum_{t=1}^n \mathbf{y}_{t-1} \mathbf{w}_i^T \mathbf{y}_t - \boldsymbol{\Sigma}_1^T \mathbf{w}_i \right\|_2 \left\| \frac{1}{n} \sum_{t=1}^n \varepsilon_{i,t} \mathbf{y}_{t-1} \right\|_2$, it holds that $E_1 = o_p\left(\frac{p}{n}\right)$. Similar to (14), we have $\text{Var}(\sqrt{n}E_2) = O(1)$. Given $\frac{p}{n} = o(1)$, it holds that $\sqrt{n}E_1 = o_p(1)$. Hence if $p = o(\sqrt{n})$,

$$\begin{aligned} & \sqrt{n} \times \frac{1}{n} \sum_{t=1}^n \mathbf{y}_{t-1}^T (\mathbf{w}_i^T \mathbf{y}_t) \frac{1}{n} \sum_{t=1}^n \varepsilon_{i,t} \mathbf{y}_{t-1} \\ &= \frac{1}{\sqrt{n}} \sum_{t=1}^n \mathbf{w}_i^T \boldsymbol{\Sigma}_1 \mathbf{y}_{t-1} \varepsilon_{i,t} + o_p(1). \end{aligned}$$

Similarly, given $p = o(\sqrt{n})$, we have

$$\begin{aligned} & \sqrt{n} \times \frac{1}{n} \sum_{t=1}^n \mathbf{y}_{t-1}^T \mathbf{y}_{i,t-1} \frac{1}{n} \sum_{t=1}^n \varepsilon_{i,t} \mathbf{y}_{t-1} \\ &= \frac{1}{\sqrt{n}} \sum_{t=1}^n \mathbf{e}_i^T \boldsymbol{\Sigma}_0 \mathbf{y}_{t-1} \varepsilon_{i,t} + o_p(1), \\ & \sqrt{n} \times \frac{1}{n} \sum_{t=1}^n \mathbf{y}_{t-1}^T (\mathbf{w}_i^T \mathbf{y}_{t-1}) \frac{1}{n} \sum_{t=1}^n \varepsilon_{i,t} \mathbf{y}_{t-1} \\ &= \frac{1}{\sqrt{n}} \sum_{t=1}^n \mathbf{w}_i^T \boldsymbol{\Sigma}_0 \mathbf{y}_{t-1} \varepsilon_{i,t} + o_p(1). \end{aligned}$$

Now it suffices to prove

$$\begin{aligned} S_{n,p} &\equiv a_1 \frac{1}{\sqrt{n}} \sum_{t=1}^n \mathbf{w}_i^T \boldsymbol{\Sigma}_1 \mathbf{y}_{t-1} \varepsilon_{i,t} + a_2 \frac{1}{\sqrt{n}} \sum_{t=1}^n \mathbf{e}_i^T \boldsymbol{\Sigma}_0 \mathbf{y}_{t-1} \varepsilon_{i,t} \\ & \quad + a_3 \frac{1}{\sqrt{n}} \sum_{t=1}^n \mathbf{w}_i^T \boldsymbol{\Sigma}_0 \mathbf{y}_{t-1} \varepsilon_{i,t} \end{aligned}$$

is asymptotic normal.

Note that it holds that

$$E|\mathbf{w}_i^T \boldsymbol{\Sigma}_1 \mathbf{y}_{t-1} \varepsilon_{i,t}|^{2+\frac{\gamma}{2}} \leq [E|\mathbf{w}_i^T \boldsymbol{\Sigma}_1 \mathbf{y}_{t-1}|^{4+\gamma}]^{\frac{1}{2}} [E|\varepsilon_{i,t}|^{4+\gamma}]^{\frac{1}{2}} < \infty.$$

Now we calculate the variance of $S_{n,p}$. It holds that

$$\begin{aligned} & \text{Var} \left(\frac{1}{\sqrt{n}} \sum_{t=1}^n \mathbf{w}_i^T \boldsymbol{\Sigma}_1 \mathbf{y}_{t-1} \varepsilon_{i,t} \right) \\ &= \mathbf{w}_i^T \boldsymbol{\Sigma}_1 \boldsymbol{\Sigma}_{\mathbf{y},\varepsilon_i}(0) \boldsymbol{\Sigma}_1^T \mathbf{w}_i + \sum_{j=1}^{n-1} \left(1 - \frac{j}{n}\right) \mathbf{w}_i^T \boldsymbol{\Sigma}_1 \\ & \quad \times [\boldsymbol{\Sigma}_{\mathbf{y},\varepsilon_i}(j) + \boldsymbol{\Sigma}_{\mathbf{y},\varepsilon_i}^T(j)] \boldsymbol{\Sigma}_1^T \mathbf{w}_i, \end{aligned} \tag{15}$$

and it follows from $\sum_{j=1}^n \alpha(j)^{\frac{\gamma}{4+\gamma}} < \infty$ that

$$\begin{aligned} & \sup_p \sum_{j=1}^{\infty} |\mathbf{w}_i^T \boldsymbol{\Sigma}_1 [\boldsymbol{\Sigma}_{\mathbf{y}, \varepsilon_i}(j) + \boldsymbol{\Sigma}_{\mathbf{y}, \varepsilon_i}^T(j)] \boldsymbol{\Sigma}_1^T \mathbf{w}_i| \\ & \leq C \sup_p \sum_{j=1}^{\infty} \alpha(j)^{\frac{\gamma}{4+\gamma}} \{E|\mathbf{w}_i^T \boldsymbol{\Sigma}_1 \mathbf{y}_{t-1}|^{4+\gamma}\}^{\frac{2}{4+\gamma}} \\ & \quad \times \{E|\varepsilon_{i,t}|^{4+\gamma}\}^{\frac{2}{4+\gamma}} < \infty. \end{aligned}$$

Similarly,

$$\begin{aligned} & \text{Cov} \left(\frac{1}{\sqrt{n}} \sum_{t=1}^n \mathbf{w}_i^T \boldsymbol{\Sigma}_1 \mathbf{y}_{t-1} \varepsilon_{i,t}, \frac{1}{\sqrt{n}} \sum_{t=1}^n \mathbf{e}_i^T \boldsymbol{\Sigma}_0 \mathbf{y}_{t-1} \varepsilon_{i,t} \right) \\ & = \mathbf{w}_i^T \boldsymbol{\Sigma}_1 \boldsymbol{\Sigma}_{\mathbf{y}, \varepsilon_i}(0) \boldsymbol{\Sigma}_0 \mathbf{e}_i + \sum_{j=1}^{n-1} \left(1 - \frac{j}{n}\right) \mathbf{w}_i^T \boldsymbol{\Sigma}_1 \\ & \quad \times [\boldsymbol{\Sigma}_{\mathbf{y}, \varepsilon_i}(j) + \boldsymbol{\Sigma}_{\mathbf{y}, \varepsilon_i}^T(j)] \boldsymbol{\Sigma}_0 \mathbf{e}_i, \end{aligned}$$

and $\sup_p \sum_{j=1}^{\infty} |\mathbf{w}_i^T \boldsymbol{\Sigma}_1 \boldsymbol{\Sigma}_{\mathbf{y}, \varepsilon_i}(j) \boldsymbol{\Sigma}_0 \mathbf{e}_i| < \infty$. Calculating all the variance and covariance and summing up them, it follows from dominated convergence theorem that

$$\text{Var} \left(\frac{S_{n,p}}{\sqrt{\mathbf{a}^T \mathbf{U}_i \mathbf{a}}} \right) \rightarrow 1.$$

To prove the asymptotic normality of $S_{n,p}$, we employ the small-block and large-block arguments. We partition the set $\{1, 2, \dots, n\}$ into $2k_n + 1$ subsets with large blocks of size l_n , small blocks of size s_n and the last remaining set of size $n - k_n(l_n + s_n)$. Put

$$l_n = \lceil \sqrt{n/\log n} \rceil, \quad s_n = \lceil \sqrt{n \log n} \rceil^x, \quad k_n = \lfloor n/(l_n + s_n) \rfloor,$$

where $\frac{\gamma}{4+\gamma} \leq x < 1$. Hence

$$l_n/\sqrt{n} \rightarrow 0, \quad s_n/l_n \rightarrow 0, \quad k_n = O(\sqrt{n \log n}).$$

Note that $l_n/\sqrt{n} \rightarrow 0$ is important when we derive the Lindeberg condition of the truncated partial sum $T_{n,p}^L$ defined in (16).

Since $\sum_{j=1}^{\infty} \alpha(j)^{\frac{\gamma}{4+\gamma}} < \infty$, we have $\alpha(s_n) = o(s_n^{-\frac{4+\gamma}{\gamma}})$. It then holds that

$$k_n \alpha(s_n) = o \left(k_n / s_n^{\frac{4+\gamma}{\gamma}} \right) = o \left(\sqrt{n \log n} / [\sqrt{n \log n}]^x \right) = o(1).$$

Then we can partition $S_{n,p}$ in the following way

$$\begin{aligned} S_{n,p} &= a_1 \frac{1}{\sqrt{n}} \sum_{j=1}^{k_n} \xi_j^{(1)} + a_2 \frac{1}{\sqrt{n}} \sum_{j=1}^{k_n} \xi_j^{(2)} + a_3 \frac{1}{\sqrt{n}} \sum_{j=1}^{k_n} \xi_j^{(3)} \\ &+ a_1 \frac{1}{\sqrt{n}} \sum_{j=1}^{k_n} \eta_j^{(1)} + a_2 \frac{1}{\sqrt{n}} \sum_{j=1}^{k_n} \eta_j^{(2)} + a_3 \frac{1}{\sqrt{n}} \sum_{j=1}^{k_n} \eta_j^{(3)} \\ &+ a_1 \frac{1}{\sqrt{n}} \zeta^{(1)} + a_2 \frac{1}{\sqrt{n}} \zeta^{(2)} + a_3 \frac{1}{\sqrt{n}} \zeta^{(3)}, \end{aligned}$$

where

$$\xi_j^{(1)} = \sum_{t=(j-1)(l_n+s_n)+1}^{jl_n+(j-1)s_n} \mathbf{w}_i^T \boldsymbol{\Sigma}_1 \mathbf{y}_{t-1} \varepsilon_{i,t},$$

$$\eta_j^{(1)} = \sum_{t=jl_n+(j-1)s_n+1}^{j(l_n+s_n)} \mathbf{w}_i^T \boldsymbol{\Sigma}_1 \mathbf{y}_{t-1} \varepsilon_{i,t},$$

$$\xi_j^{(2)} = \sum_{t=(j-1)(l_n+s_n)+1}^{jl_n+(j-1)s_n} \mathbf{e}_i^T \boldsymbol{\Sigma}_0 \mathbf{y}_{t-1} \varepsilon_{i,t},$$

$$\eta_j^{(2)} = \sum_{t=jl_n+(j-1)s_n+1}^{j(l_n+s_n)} \mathbf{e}_i^T \boldsymbol{\Sigma}_0 \mathbf{y}_{t-1} \varepsilon_{i,t},$$

$$\xi_j^{(3)} = \sum_{t=(j-1)(l_n+s_n)+1}^{jl_n+(j-1)s_n} \mathbf{w}_i^T \boldsymbol{\Sigma}_0 \mathbf{y}_{t-1} \varepsilon_{i,t},$$

$$\eta_j^{(3)} = \sum_{t=jl_n+(j-1)s_n+1}^{j(l_n+s_n)} \mathbf{w}_i^T \boldsymbol{\Sigma}_0 \mathbf{y}_{t-1} \varepsilon_{i,t},$$

$$\zeta^{(1)} = \sum_{k_n(l_n+s_n)+1}^n \mathbf{w}_i^T \boldsymbol{\Sigma}_1 \mathbf{y}_{t-1} \varepsilon_{i,t},$$

$$\zeta^{(2)} = \sum_{k_n(l_n+s_n)+1}^n \mathbf{e}_i^T \boldsymbol{\Sigma}_0 \mathbf{y}_{t-1} \varepsilon_{i,t},$$

$$\zeta^{(3)} = \sum_{k_n(l_n+s_n)+1}^n \mathbf{w}_i^T \boldsymbol{\Sigma}_0 \mathbf{y}_{t-1} \varepsilon_{i,t}.$$

Note that $\alpha(n) = o(n^{-\frac{(2+\gamma/2)2}{2(2+\gamma/2-2)}})$ and $k_n s_n/n \rightarrow 0, (l_n + s_n)/n \rightarrow 0$, by applying Proposition 2.7 of Fan and Yao (2003), it holds that

$$\frac{1}{\sqrt{n}} \sum_{j=1}^{k_n} \eta_j^{(l)} = o_p(1), \quad \text{and} \quad \frac{1}{\sqrt{n}} \zeta^{(l)} = o_p(1), \quad l = 1, 2, 3.$$

Therefore

$$\begin{aligned} S_{n,p} &= a_1 \frac{1}{\sqrt{n}} \sum_{j=1}^{k_n} \xi_j^{(1)} + a_2 \frac{1}{\sqrt{n}} \sum_{j=1}^{k_n} \xi_j^{(2)} + a_3 \frac{1}{\sqrt{n}} \sum_{j=1}^{k_n} \xi_j^{(3)} + o_p(1) \\ &\equiv T_{n,p} + o_p(1). \end{aligned}$$

We calculate the variance of $T_{n,p}$. Similar to (15), it holds that

$$\begin{aligned} \text{Var} \left(a_1 \frac{1}{\sqrt{n}} \sum_{j=1}^{k_n} \xi_j^{(1)} \right) &= a_1^2 \frac{k_n}{n} \text{Var} \left(\xi_1^{(1)} \right) \{1 + o(1)\} \\ &= a_1^2 \frac{k_n}{n} \text{Var} \left(\sum_{t=1}^{l_n} \mathbf{w}_i^T \boldsymbol{\Sigma}_1 \mathbf{y}_{t-1} \varepsilon_{i,t} \right) \{1 + o(1)\} \\ &= a_1^2 \frac{k_n l_n}{n} \left[\mathbf{w}_i^T \boldsymbol{\Sigma}_1 \boldsymbol{\Sigma}_{\mathbf{y}, \varepsilon_i}(0) \boldsymbol{\Sigma}_1^T \mathbf{w}_i + \sum_{j=1}^{l_n-1} \left(1 - \frac{j}{l_n}\right) \mathbf{w}_i^T \boldsymbol{\Sigma}_1 \right. \\ & \quad \left. \times [\boldsymbol{\Sigma}_{\mathbf{y}, \varepsilon_i}(j) + \boldsymbol{\Sigma}_{\mathbf{y}, \varepsilon_i}^T(j)] \boldsymbol{\Sigma}_1^T \mathbf{w}_i \right] \{1 + o(1)\}. \end{aligned}$$

Calculating all the variance and covariance and summing up them, by dominated convergence theorem and $\frac{k_n l_n}{n} \rightarrow 1$, it holds that

$$\text{Var} \left(\frac{T_{n,p}}{\sqrt{\mathbf{a}^T \mathbf{U}_i \mathbf{a}}} \right) \rightarrow 1.$$

Now it suffices to prove the asymptotic normality of $T_{n,p}$. We partition $T_{n,p}$ into two parts via truncation. Specifically, we define

$$\xi_j^{(1)L} = \sum_{t=(j-1)(l_n+s_n)+1}^{jl_n+(j-1)s_n} \mathbf{w}_i^T \boldsymbol{\Sigma}_1 \mathbf{y}_{t-1} \varepsilon_{i,t} I_{\{|\mathbf{w}_i^T \boldsymbol{\Sigma}_1 \mathbf{y}_{t-1} \varepsilon_{i,t}| \leq L\}},$$

and

$$\xi_j^{(1)R} = \sum_{t=(j-1)(l_n+s_n)+1}^{jl_n+(j-1)s_n} \mathbf{w}_i^T \boldsymbol{\Sigma}_1 \mathbf{y}_{t-1} \varepsilon_{i,t} I_{\{|\mathbf{w}_i^T \boldsymbol{\Sigma}_1 \mathbf{y}_{t-1} \varepsilon_{i,t}| > L\}}.$$

Similarly, we have $\xi_j^{(2)L}, \xi_j^{(2)R}$ and $\xi_j^{(3)L}, \xi_j^{(3)R}$. Then

$$T_{n,p} = \left(a_1 \frac{1}{\sqrt{n}} \sum_{j=1}^{k_n} \xi_j^{(1)L} + a_2 \frac{1}{\sqrt{n}} \sum_{j=1}^{k_n} \xi_j^{(2)L} + a_3 \frac{1}{\sqrt{n}} \sum_{j=1}^{k_n} \xi_j^{(3)L} \right) + \left(a_1 \frac{1}{\sqrt{n}} \sum_{j=1}^{k_n} \xi_j^{(1)R} + a_2 \frac{1}{\sqrt{n}} \sum_{j=1}^{k_n} \xi_j^{(2)R} + a_3 \frac{1}{\sqrt{n}} \sum_{j=1}^{k_n} \xi_j^{(3)R} \right) \equiv T_{n,p}^L + T_{n,p}^R \tag{16}$$

Similar to computing the $\text{Var}(T_{n,p})$, it holds that

$$\begin{aligned} \text{Var}(T_{n,p}^L) &= a_1^2 \text{Var} \left(\frac{1}{\sqrt{n}} \sum_{j=1}^{k_n} \xi_j^{(1)L} \right) + \Omega^L \\ &= a_1^2 \frac{k_n}{n} \text{Var} \left(\xi_1^{(1)L} \right) \{1 + o(1)\} + \Omega^L \\ &= a_1^2 \frac{k_n}{n} \text{Var} \left(\sum_{t=1}^{l_n} \mathbf{w}_i^T \boldsymbol{\Sigma}_1 \mathbf{y}_{t-1} \varepsilon_{i,t} I_{\{|\mathbf{w}_i^T \boldsymbol{\Sigma}_1 \mathbf{y}_{t-1} \varepsilon_{i,t}| \leq L\}} \right) \times \{1 + o(1)\} + \Omega^L \\ &= a_1^2 \frac{k_n l_n}{n} \left[\text{Var} \left(\mathbf{w}_i^T \boldsymbol{\Sigma}_1 \mathbf{y}_{t-1} \varepsilon_{i,t} I_{\{|\mathbf{w}_i^T \boldsymbol{\Sigma}_1 \mathbf{y}_{t-1} \varepsilon_{i,t}| \leq L\}} \right) + 2 \sum_{j=1}^{l_n-1} \left(1 - \frac{j}{l_n} \right) \text{Cov} \left(\mathbf{w}_i^T \boldsymbol{\Sigma}_1 \mathbf{y}_{t-1+j} \varepsilon_{i,t+j} I_{\{|\mathbf{w}_i^T \boldsymbol{\Sigma}_1 \mathbf{y}_{t-1+j} \varepsilon_{i,t+j}| \leq L\}}, \mathbf{w}_i^T \boldsymbol{\Sigma}_1 \mathbf{y}_{t-1} \varepsilon_{i,t} I_{\{|\mathbf{w}_i^T \boldsymbol{\Sigma}_1 \mathbf{y}_{t-1} \varepsilon_{i,t}| \leq L\}} \right) \right] \{1 + o(1)\} + \Omega^L, \end{aligned}$$

where Ω^L is the sum of all the rest variance and covariance except $\text{Var} \left(a_1 \frac{1}{\sqrt{n}} \sum_{j=1}^{k_n} \xi_j^{(1)L} \right)$. Therefore

$$\text{Var} \left(\frac{\text{Var}(T_{n,p}^L)}{\sigma_L^2} \right) \rightarrow 1,$$

where we denote σ_L^2 as the asymptotic variance of $T_{n,p}^L$. Similarly, we have

$$\begin{aligned} \text{Var}(T_{n,p}^R) &= a_1^2 \frac{k_n l_n}{n} \left[\text{Var} \left(\mathbf{w}_i^T \boldsymbol{\Sigma}_1 \mathbf{y}_{t-1} \varepsilon_{i,t} I_{\{|\mathbf{w}_i^T \boldsymbol{\Sigma}_1 \mathbf{y}_{t-1} \varepsilon_{i,t}| > L\}} \right) + 2 \sum_{j=1}^{l_n-1} \left(1 - \frac{j}{l_n} \right) \text{Cov} \left(\mathbf{w}_i^T \boldsymbol{\Sigma}_1 \mathbf{y}_{t-1+j} \varepsilon_{i,t+j} I_{\{|\mathbf{w}_i^T \boldsymbol{\Sigma}_1 \mathbf{y}_{t-1+j} \varepsilon_{i,t+j}| > L\}}, \mathbf{w}_i^T \boldsymbol{\Sigma}_1 \mathbf{y}_{t-1} \varepsilon_{i,t} I_{\{|\mathbf{w}_i^T \boldsymbol{\Sigma}_1 \mathbf{y}_{t-1} \varepsilon_{i,t}| > L\}} \right) \right] \{1 + o(1)\} + \Omega^R. \end{aligned}$$

Define

$$M_{n,p} = \left| \text{E} \exp \left(\frac{it T_{n,p}}{\sqrt{\mathbf{a}^T \mathbf{U}_i \mathbf{a}}} \right) - \exp \left(-\frac{t^2}{2} \right) \right|,$$

where $i = \sqrt{-1}$ now. We bound $M_{n,p}$ as follows

$$\begin{aligned} M_{n,p} &\leq \text{E} \left| \exp \left(\frac{it T_{n,p}^L}{\sqrt{\mathbf{a}^T \mathbf{U}_i \mathbf{a}}} \right) \left[\exp \left(\frac{it T_{n,p}^R}{\sqrt{\mathbf{a}^T \mathbf{U}_i \mathbf{a}}} \right) - 1 \right] \right| \\ &+ \left| \text{E} \exp \left(\frac{it T_{n,p}^L}{\sqrt{\mathbf{a}^T \mathbf{U}_i \mathbf{a}}} \right) - \prod_{j=1}^{k_n} \text{E} \right| \end{aligned}$$

$$\begin{aligned} &\exp \left[\frac{it \left(a_1 \frac{1}{\sqrt{n}} \xi_j^{(1)L} + a_2 \frac{1}{\sqrt{n}} \xi_j^{(2)L} + a_3 \frac{1}{\sqrt{n}} \xi_j^{(3)L} \right)}{\sqrt{\mathbf{a}^T \mathbf{U}_i \mathbf{a}}} \right] \Bigg| \\ &+ \left| \prod_{j=1}^{k_n} \text{E} \exp \left[\frac{it \left(a_1 \frac{1}{\sqrt{n}} \xi_j^{(1)L} + a_2 \frac{1}{\sqrt{n}} \xi_j^{(2)L} + a_3 \frac{1}{\sqrt{n}} \xi_j^{(3)L} \right)}{\sqrt{\mathbf{a}^T \mathbf{U}_i \mathbf{a}}} \right] \right. \\ &\quad \left. - \exp \left(-\frac{t^2}{2} \frac{\sigma_L^2}{\mathbf{a}^T \mathbf{U}_i \mathbf{a}} \right) \right| \\ &+ \left| \exp \left(-\frac{t^2}{2} \frac{\sigma_L^2}{\mathbf{a}^T \mathbf{U}_i \mathbf{a}} \right) - \exp \left(-\frac{t^2}{2} \right) \right|. \end{aligned}$$

Following the same arguments as part 2.7.7 of Fan and Yao (2003), for any $\epsilon > 0$, it holds that $M_{n,p} < \epsilon$ as $n, p \rightarrow \infty$. Hence

$$\begin{aligned} &\sqrt{n} \times \mathbf{a}^T \left(\frac{1}{n} \sum_{t=1}^n \mathbf{y}_{t-1}^T (\mathbf{w}_i^T \mathbf{y}_t) \frac{1}{n} \sum_{t=1}^n \varepsilon_{i,t} \mathbf{y}_{t-1} \right. \\ &\quad \left. \frac{1}{n} \sum_{t=1}^n \mathbf{y}_{t-1}^T \mathbf{y}_{i,t-1} \frac{1}{n} \sum_{t=1}^n \varepsilon_{i,t} \mathbf{y}_{t-1} \right. \\ &\quad \left. \frac{1}{n} \sum_{t=1}^n \mathbf{y}_{t-1}^T (\mathbf{w}_i^T \mathbf{y}_{t-1}) \frac{1}{n} \sum_{t=1}^n \varepsilon_{i,t} \mathbf{y}_{t-1} \right) / \sqrt{\mathbf{a}^T \mathbf{U}_i \mathbf{a}} \\ &\xrightarrow{d} N(0, 1). \end{aligned}$$

Substituting \mathbf{a} by $(\mathbf{U}_i^{-\frac{1}{2}})^T \mathbf{a}$, it holds that

$$\begin{aligned} &\mathbf{a}^T \left\{ \sqrt{n} \mathbf{U}_i^{-\frac{1}{2}} \left(\frac{1}{n} \sum_{t=1}^n \mathbf{y}_{t-1}^T (\mathbf{w}_i^T \mathbf{y}_t) \frac{1}{n} \sum_{t=1}^n \varepsilon_{i,t} \mathbf{y}_{t-1} \right. \right. \\ &\quad \left. \frac{1}{n} \sum_{t=1}^n \mathbf{y}_{t-1}^T \mathbf{y}_{i,t-1} \frac{1}{n} \sum_{t=1}^n \varepsilon_{i,t} \mathbf{y}_{t-1} \right. \\ &\quad \left. \left. \frac{1}{n} \sum_{t=1}^n \mathbf{y}_{t-1}^T (\mathbf{w}_i^T \mathbf{y}_{t-1}) \frac{1}{n} \sum_{t=1}^n \varepsilon_{i,t} \mathbf{y}_{t-1} \right) \right\} \\ &\xrightarrow{d} \mathbf{a}^T N(0, \mathbf{I}_3), \end{aligned}$$

which leads to the fact that

$$\begin{aligned} &\sqrt{n} \mathbf{U}_i^{-\frac{1}{2}} \left(\frac{1}{n} \sum_{t=1}^n \mathbf{y}_{t-1}^T (\mathbf{w}_i^T \mathbf{y}_t) \frac{1}{n} \sum_{t=1}^n \varepsilon_{i,t} \mathbf{y}_{t-1} \right. \\ &\quad \left. \frac{1}{n} \sum_{t=1}^n \mathbf{y}_{t-1}^T \mathbf{y}_{i,t-1} \frac{1}{n} \sum_{t=1}^n \varepsilon_{i,t} \mathbf{y}_{t-1} \right. \\ &\quad \left. \frac{1}{n} \sum_{t=1}^n \mathbf{y}_{t-1}^T (\mathbf{w}_i^T \mathbf{y}_{t-1}) \frac{1}{n} \sum_{t=1}^n \varepsilon_{i,t} \mathbf{y}_{t-1} \right) \xrightarrow{d} N(0, \mathbf{I}_3). \end{aligned}$$

To prove (2), let us look at the $(1, 1)$ th element of $\widehat{\mathbf{X}}_i^T \widehat{\mathbf{X}}_i$. We have

$$\begin{aligned} &\frac{1}{n} \sum_{t=1}^n \mathbf{y}_{t-1}^T (\mathbf{w}_i^T \mathbf{y}_t) \frac{1}{n} \sum_{t=1}^n \mathbf{y}_{t-1} (\mathbf{w}_i^T \mathbf{y}_t) \\ &= \left(\frac{1}{n} \sum_{t=1}^n \mathbf{y}_{t-1}^T (\mathbf{w}_i^T \mathbf{y}_t) - \mathbf{w}_i^T \boldsymbol{\Sigma}_1 \right) \left(\frac{1}{n} \sum_{t=1}^n \mathbf{y}_{t-1} (\mathbf{w}_i^T \mathbf{y}_t) - \boldsymbol{\Sigma}_1^T \mathbf{w}_i \right) \\ &\quad + 2 \mathbf{w}_i^T \boldsymbol{\Sigma}_1 \left(\frac{1}{n} \sum_{t=1}^n \mathbf{y}_{t-1} (\mathbf{w}_i^T \mathbf{y}_t) - \boldsymbol{\Sigma}_1^T \mathbf{w}_i \right) + \mathbf{w}_i^T \boldsymbol{\Sigma}_1 \boldsymbol{\Sigma}_1^T \mathbf{w}_i. \tag{17} \end{aligned}$$

Using the same arguments as (14), the first term is $O_p(\frac{p}{n})$ and the second term is $O_p(\frac{1}{\sqrt{n}})$. Hence given $p = o(n)$, it holds that

$$\frac{\frac{1}{n} \sum_{t=1}^n \mathbf{y}_{t-1}^T (\mathbf{w}_i^T \mathbf{y}_t) \frac{1}{n} \sum_{t=1}^n \mathbf{y}_{t-1} (\mathbf{w}_i^T \mathbf{y}_t)}{\mathbf{w}_i^T \Sigma_1 \Sigma_1^T \mathbf{w}_i} \rightarrow 1.$$

Applying the same arguments to the other elements of $\widehat{\mathbf{X}}_i^T \widehat{\mathbf{X}}_i$, it holds that

$$\mathbf{V}_i (\widehat{\mathbf{X}}_i^T \widehat{\mathbf{X}}_i)^{-1} \xrightarrow{p} \mathbf{I}_3.$$

To prove (ii) in Theorem 2, the required asymptotic result follows from (13) and (17) immediately when $p = o(n)$ and $\sqrt{n} = O(p)$. The proof is completed. \square

Proof of Corollary 1. By Theorem 2, it holds that

$$\left\| \begin{pmatrix} \widehat{\lambda}_{0i} \\ \widehat{\lambda}_{1i} \\ \widehat{\lambda}_{2i} \end{pmatrix} - \begin{pmatrix} \lambda_{0i} \\ \lambda_{1i} \\ \lambda_{2i} \end{pmatrix} \right\|_1 = \begin{cases} O_p\left(\frac{1}{\sqrt{n}}\right) & \text{if } \frac{p}{\sqrt{n}} = O(1), \\ O_p\left(\frac{p}{n}\right) & \text{if } \frac{p}{\sqrt{n}} \rightarrow \infty \text{ and } \frac{p}{n} = o(1) \end{cases}$$

for all i . The required asymptotic result follows from the above result directly. \square

Proof of Theorem 4. Let us look at term E_1 and E_2 in (13) first under the new condition (A5). Similar to the proof of (14), it holds that

$$E_1 = O_p\left(\frac{ps_1^{3/4}(p)}{n}\right), \quad E_2 = O_p\left(\frac{s_0^{1/4}(p)}{\sqrt{n}}\right).$$

Hence

$$\frac{1}{n} \sum_{t=1}^n \mathbf{y}_{t-1}^T (\mathbf{w}_i^T \mathbf{y}_t) \frac{1}{n} \sum_{t=1}^n \varepsilon_{i,t} \mathbf{y}_{t-1} = O_p\left(\frac{ps_1^{3/4}(p)}{n} + \frac{s_0^{1/4}(p)}{\sqrt{n}}\right).$$

Similarly, we have

$$\begin{aligned} \frac{1}{n} \sum_{t=1}^n \mathbf{y}_{t-1}^T \mathbf{y}_{i,t-1} \frac{1}{n} \sum_{t=1}^n \varepsilon_{i,t} \mathbf{y}_{t-1} &= O_p\left(\frac{ps_1^{3/4}(p)}{n} + \frac{s_0^{1/4}(p)}{\sqrt{n}}\right), \\ \frac{1}{n} \sum_{t=1}^n \mathbf{y}_{t-1}^T (\mathbf{w}_i^T \mathbf{y}_{t-1}) \frac{1}{n} \sum_{t=1}^n \varepsilon_{i,t} \mathbf{y}_{t-1} &= O_p\left(\frac{ps_1^{3/4}(p)}{n} + \frac{s_0^{1/4}(p)}{\sqrt{n}}\right). \end{aligned}$$

For the first diagonal element of $\widehat{\mathbf{X}}_i^T \widehat{\mathbf{X}}_i$, it follows from considering the three terms in (17) separately that

$$\begin{aligned} \frac{1}{n} \sum_{t=1}^n \mathbf{y}_{t-1}^T (\mathbf{w}_i^T \mathbf{y}_t) \frac{1}{n} \sum_{t=1}^n \mathbf{y}_{t-1} (\mathbf{w}_i^T \mathbf{y}_t) \\ = O_p\left(\frac{ps_1(p)}{n} + \frac{s_0^{1/4}(p)s_1^{1/4}(p)}{\sqrt{n}}\right) + \mathbf{w}_i^T \Sigma_1 \Sigma_1^T \mathbf{w}_i. \end{aligned}$$

Similarly,

$$\begin{aligned} \frac{1}{n} \sum_{t=1}^n \mathbf{y}_{t-1}^T \mathbf{y}_{i,t-1} \frac{1}{n} \sum_{t=1}^n \mathbf{y}_{t-1} \mathbf{y}_{i,t-1} \\ = O_p\left(\frac{ps_1(p)}{n} + \frac{s_0^{1/4}(p)s_1^{1/4}(p)}{\sqrt{n}}\right) + \mathbf{e}_i^T \Sigma_0 \Sigma_0 \mathbf{e}_i, \end{aligned}$$

$$\frac{1}{n} \sum_{t=1}^n \mathbf{y}_{t-1}^T (\mathbf{w}_i^T \mathbf{y}_{t-1}) \frac{1}{n} \sum_{t=1}^n \mathbf{y}_{t-1} (\mathbf{w}_i^T \mathbf{y}_{t-1})$$

$$= O_p\left(\frac{ps_1(p)}{n} + \frac{s_0^{1/4}(p)s_1^{1/4}(p)}{\sqrt{n}}\right) + \mathbf{w}_i^T \Sigma_0 \Sigma_0 \mathbf{w}_i.$$

Given $\frac{ps_1(p)}{s_2(p)} = o(n)$ and $\frac{s_0^{1/2}(p)}{ps_1^{1/2}(p)s_2(p)} = O(1)$, we have

$$\frac{ps_1(p)}{n} = o(s_2(p)), \quad \frac{s_0^{1/4}(p)s_1^{1/4}(p)}{\sqrt{n}} = o(s_2(p)).$$

Divide both the numerator and denominator of estimator (3) by $s_2(p)$, it holds that

$$\left\| \begin{pmatrix} \widehat{\lambda}_{0i} \\ \widehat{\lambda}_{1i} \\ \widehat{\lambda}_{2i} \end{pmatrix} - \begin{pmatrix} \lambda_{0i} \\ \lambda_{1i} \\ \lambda_{2i} \end{pmatrix} \right\|_2 = O_p\left(\frac{ps_1^{3/4}(p)}{ns_2(p)} + \frac{s_0^{1/4}(p)}{\sqrt{ns_2(p)}}\right).$$

The required result then follows directly. \square

Lemma 1. Under conditions A1 and B1–B3, condition A2 holds with $\gamma = 4$.

Proof. It is apparent that part (a) of A2 is satisfied under A1 and B1–B3. \mathbf{y}_t is strictly stationary because $\varepsilon_{i,t}$ are *i.i.d* across i and t and condition B3. Since the density function of $\varepsilon_{i,t}$ exists, $\alpha(n)$ decays exponentially fast, see Pham and Tran (1985). Therefore $\sum_{j=1}^{\infty} \alpha(j)^{\frac{\gamma}{4+\gamma}} < \infty$. Now we prove A2(c) when $\gamma = 4$.

We present a more general result first: for any $p \times 1$ vector \mathbf{a} satisfying $\sup_p \|\mathbf{a}\|_1 < \infty$, it holds that

$$\sup_p E |\mathbf{a}^T \mathbf{y}_t|^8 < \infty.$$

Note that

$$\mathbf{y}_t = \sum_{h=0}^{\infty} \mathbf{A}^h \mathbf{S}^{-1}(\lambda_0) \mathbf{e}_{t-h} \equiv \sum_{h=0}^{\infty} \mathbf{B}_h \mathbf{e}_{t-h}.$$

Then

$$\begin{aligned} E |\mathbf{a}^T \mathbf{y}_t|^8 &= E \left| \sum_{h=0}^{\infty} \mathbf{a}^T \mathbf{B}_h \mathbf{e}_{t-h} \right|^8 = E \left| \sum_{h=0}^{\infty} \mathbf{b}_h^T \mathbf{e}_{t-h} \right|^8 \\ &= E \left| \sum_{h_1, h_2, h_3, h_4, h_5, h_6, h_7, h_8=0}^{\infty} (\mathbf{e}_{t-h_1}^T \mathbf{b}_{h_1} \mathbf{b}_{h_2}^T \mathbf{e}_{t-h_2}) \right. \\ &\quad \times (\mathbf{e}_{t-h_3}^T \mathbf{b}_{h_3} \mathbf{b}_{h_4}^T \mathbf{e}_{t-h_4}) \\ &\quad \left. \times (\mathbf{e}_{t-h_5}^T \mathbf{b}_{h_5} \mathbf{b}_{h_6}^T \mathbf{e}_{t-h_6}) (\mathbf{e}_{t-h_7}^T \mathbf{b}_{h_7} \mathbf{b}_{h_8}^T \mathbf{e}_{t-h_8}) \right|^8 \\ &= E \left| \sum_{h_1, h_2, h_3, h_4, h_5, h_6, h_7, h_8=0}^{\infty} \left(\sum_{i_1, j_1=1}^p [\mathbf{b}_{h_1} \mathbf{b}_{h_2}^T]_{i_1 j_1} \varepsilon_{i_1, t-h_1} \varepsilon_{j_1, t-h_2} \right) \right. \\ &\quad \times \left(\sum_{i_2, j_2=1}^p [\mathbf{b}_{h_3} \mathbf{b}_{h_4}^T]_{i_2 j_2} \varepsilon_{i_2, t-h_3} \varepsilon_{j_2, t-h_4} \right) \\ &\quad \times \left(\sum_{i_3, j_3=1}^p [\mathbf{b}_{h_5} \mathbf{b}_{h_6}^T]_{i_3 j_3} \varepsilon_{i_3, t-h_5} \varepsilon_{j_3, t-h_6} \right) \\ &\quad \left. \times \left(\sum_{i_4, j_4=1}^p [\mathbf{b}_{h_7} \mathbf{b}_{h_8}^T]_{i_4 j_4} \varepsilon_{i_4, t-h_7} \varepsilon_{j_4, t-h_8} \right) \right|^8 \\ &= E \left| \sum_{h_1, h_2, h_3, h_4, h_5, h_6, h_7, h_8=0}^{\infty} \sum_{i_1, j_1, i_2, j_2, i_3, j_3, i_4, j_4=1}^p [\mathbf{b}_{h_1} \mathbf{b}_{h_2}^T]_{i_1 j_1} \right. \\ &\quad \times [\mathbf{b}_{h_3} \mathbf{b}_{h_4}^T]_{i_2 j_2} [\mathbf{b}_{h_5} \mathbf{b}_{h_6}^T]_{i_3 j_3} [\mathbf{b}_{h_7} \mathbf{b}_{h_8}^T]_{i_4 j_4} \\ &\quad \left. \times \varepsilon_{i_1, t-h_1} \varepsilon_{j_1, t-h_2} \varepsilon_{i_2, t-h_3} \varepsilon_{j_2, t-h_4} \varepsilon_{i_3, t-h_5} \varepsilon_{j_3, t-h_6} \varepsilon_{i_4, t-h_7} \varepsilon_{j_4, t-h_8} \right|^8 \end{aligned}$$

$$\begin{aligned}
 & \times \varepsilon_{j_3,t-h_6} \varepsilon_{i_4,t-h_7} \varepsilon_{j_4,t-h_8} \Big| \\
 \leq & \sum_{h_1,h_2,h_3,h_4,h_5,h_6,h_7,h_8=0}^{\infty} \sum_{i_1,j_1,i_2,j_2,i_3,j_3,i_4,j_4=1}^p \Big| [\mathbf{b}_{h_1} \mathbf{b}_{h_2}^T]_{i_1 j_1} \\
 & \times [\mathbf{b}_{h_3} \mathbf{b}_{h_4}^T]_{i_2 j_2} \\
 & \times [\mathbf{b}_{h_5} \mathbf{b}_{h_6}^T]_{i_3 j_3} [\mathbf{b}_{h_7} \mathbf{b}_{h_8}^T]_{i_4 j_4} \Big| \\
 & \times E|\varepsilon_{i_1,t-h_1} \varepsilon_{j_1,t-h_2} \varepsilon_{i_2,t-h_3} \varepsilon_{j_2,t-h_4} \varepsilon_{i_3,t-h_5} \\
 & \times \varepsilon_{j_3,t-h_6} \varepsilon_{i_4,t-h_7} \varepsilon_{j_4,t-h_8}| \\
 \leq & C \sum_{h_1,h_2,h_3,h_4,h_5,h_6,h_7,h_8=0}^{\infty} \sum_{i_1,j_1,i_2,j_2,i_3,j_3,i_4,j_4=1}^p |\mathbf{b}_{h_1} \mathbf{b}_{h_2}^T|_{i_1 j_1} \\
 & \times |\mathbf{b}_{h_3} \mathbf{b}_{h_4}^T|_{i_2 j_2} |\mathbf{b}_{h_5} \mathbf{b}_{h_6}^T|_{i_3 j_3} |\mathbf{b}_{h_7} \mathbf{b}_{h_8}^T|_{i_4 j_4} \\
 = & C \left[\sum_{h=0}^{\infty} \sum_{g=0}^{\infty} \sum_{i=1}^p \sum_{j=1}^p |\mathbf{b}_h \mathbf{b}_g^T|_{ij} \right]^4. \tag{18}
 \end{aligned}$$

And

$$\begin{aligned}
 \sum_{h=0}^{\infty} \sum_{g=0}^{\infty} \sum_{i=1}^p \sum_{j=1}^p |\mathbf{b}_h \mathbf{b}_g^T|_{ij} & \leq \sum_{h=0}^{\infty} \sum_{g=0}^{\infty} \sum_{i=1}^p \sum_{j=1}^p (|\mathbf{b}_h| |\mathbf{b}_g^T|)_{ij} \\
 & = \sum_{i=1}^p \sum_{j=1}^p \left(\sum_{h=0}^{\infty} \sum_{g=0}^{\infty} |\mathbf{b}_h| |\mathbf{b}_g^T| \right)_{ij} \\
 & = \sum_{i=1}^p \sum_{j=1}^p \left(\sum_{h=0}^{\infty} |\mathbf{b}_h| \sum_{g=0}^{\infty} |\mathbf{b}_g^T| \right)_{ij} \\
 & = \sum_{i=1}^p \sum_{j=1}^p \left(\sum_{h=0}^{\infty} |\mathbf{b}_h| \right)_i \left(\sum_{g=0}^{\infty} |\mathbf{b}_g| \right)_j \\
 & = \sum_{i=1}^p \left(\sum_{h=0}^{\infty} |\mathbf{b}_h| \right)_i \sum_{j=1}^p \left(\sum_{g=0}^{\infty} |\mathbf{b}_g| \right)_j, \tag{19}
 \end{aligned}$$

where $\left(\sum_{h=0}^{\infty} |\mathbf{b}_h|\right)_i$ is the i th element of the column vector $\sum_{h=0}^{\infty} |\mathbf{b}_h|$.

Since $\left(\sum_{h=0}^{\infty} |\mathbf{B}_h|\right)_{ij} = \sum_{h=0}^{\infty} (|\mathbf{A}^h \mathbf{S}^{-1}(\lambda_0)|)_{ij} \leq \left(\sum_{h=0}^{\infty} |\mathbf{A}^h| |\mathbf{S}^{-1}(\lambda_0)|\right)_{ij}$ where the row and column sums of $\sum_{h=0}^{\infty} |\mathbf{A}^h| |\mathbf{S}^{-1}(\lambda_0)|$ are bounded uniformly in p , it holds that the row and column sums of $\sum_{h=0}^{\infty} |\mathbf{B}_h|$ are bounded uniformly in p . Note that

$$\left(\sum_{h=0}^{\infty} |\mathbf{b}_h|\right)_i = \left(\sum_{h=0}^{\infty} |\mathbf{B}_h^T \mathbf{a}|\right)_i \leq \left(\sum_{h=0}^{\infty} |\mathbf{B}_h^T| |\mathbf{a}|\right)_i,$$

where the row and column sums of $\sum_{h=0}^{\infty} |\mathbf{B}_h^T|$ and $|\mathbf{a}|$ are bounded uniformly in p . Hence the row and column sums of $\sum_{h=0}^{\infty} |\mathbf{B}_h^T| |\mathbf{a}|$ are bounded uniformly in p . It follows from (18) and (19) that

$$\sup_p E |\mathbf{a}^T \mathbf{y}_t|^8 \leq C \left[\sum_{i=1}^p \left(\sum_{h=0}^{\infty} |\mathbf{b}_h| \right)_i \sum_{j=1}^p \left(\sum_{g=0}^{\infty} |\mathbf{b}_g| \right)_j \right]^4 = O(1).$$

It is easy to prove that

$$\begin{aligned}
 \sup_p \|\Sigma_0 \mathbf{w}_i\|_1 & < \infty, & \sup_p \|\Sigma_1^T \mathbf{w}_i\|_1 & < \infty, \\
 \sup_p \|\Sigma_0 \mathbf{e}_i\|_1 & < \infty.
 \end{aligned}$$

Thus $\sup_p \|\mathbf{w}_i \Sigma_0 \mathbf{y}_t\|_1 < \infty$ and etc.

The row and column sums of Σ_0 and Σ_1 are bounded uniformly in p . Then

$$\sup_p \mathbf{w}_i^T \Sigma_1 \Sigma_1^T \mathbf{w}_i = O(1).$$

Similarly, we can prove the other diagonal elements of \mathbf{V}_i and \mathbf{U}_i are bounded uniformly in p .

The proof is completed. \square

References

Bai, J., Shi, S., 2011. Estimating high dimensional covariance matrices and its applications. *Ann. Econ. Financ.* 12 (2), 199–215.

Baltagi, B., Song, S.H., Koh, W., 2003. Testing panel data regression models with spatial error correlation. *J. Econometrics* 117, 123–150.

Chang, J., Chen, S.X., Chen, X., 2014a. High dimensional generalized empirical likelihood for moment restrictions with dependent data. *J. Econometrics*. <http://dx.doi.org/10.1016/j.jeconom.2014.10.011> (in press).

Chang, J., Guo, B., Yao, Q., 2014b. Principal component analysis for second-order stationary vector time series. Manuscript.

Cliff, A.D., Ord, J.K., 1973. *Spatial Autocorrelation*. Pion Ltd., London.

Fan, J., Yao, Q., 2003. *Nonlinear Time Series Analysis: Nonparametric and Parametric Methods*. Springer, New York.

Lee, L.F., 2001. Generalized method of moments estimation of spatial autoregressive processes. Manuscripts, Department of Economics, OSU, August 2001.

Lee, L.F., Yu, J., 2010. Some recent developments in spatial panel data models. *Reg. Sci. Urban Econ.* 40, 255–271.

Lee, L.F., Yu, J., 2013. Near unit root in the spatial autoregressive model. *Spat. Econ. Anal.* 8, 314–351.

Lin, X., Lee, L.F., 2010. GMM estimation of spatial autoregressive models with unknown heteroskedasticity. *J. Econometrics* 177, 34–52.

Pham, T.D., Tran, L.T., 1985. Some mixing properties of time series models. *Stochastic Process. Appl.* 19, 279–303.

Yu, J., de Jong, R., Lee, L.F., 2008. Quasi-maximum likelihood estimators for spatial dynamic panel data with fixed effects when both n and T are large. *J. Econometrics* 146, 118–134.

Yu, J., de Jong, R., Lee, L.F., 2012. Estimation for spatial dynamic panel data with fixed effects: the case of spatial cointegration. *J. Econometrics* 167, 16–37.